



Greenwood Place, Eccles

Manchester



Offers in Region of **£590,000**

Greenwood Place

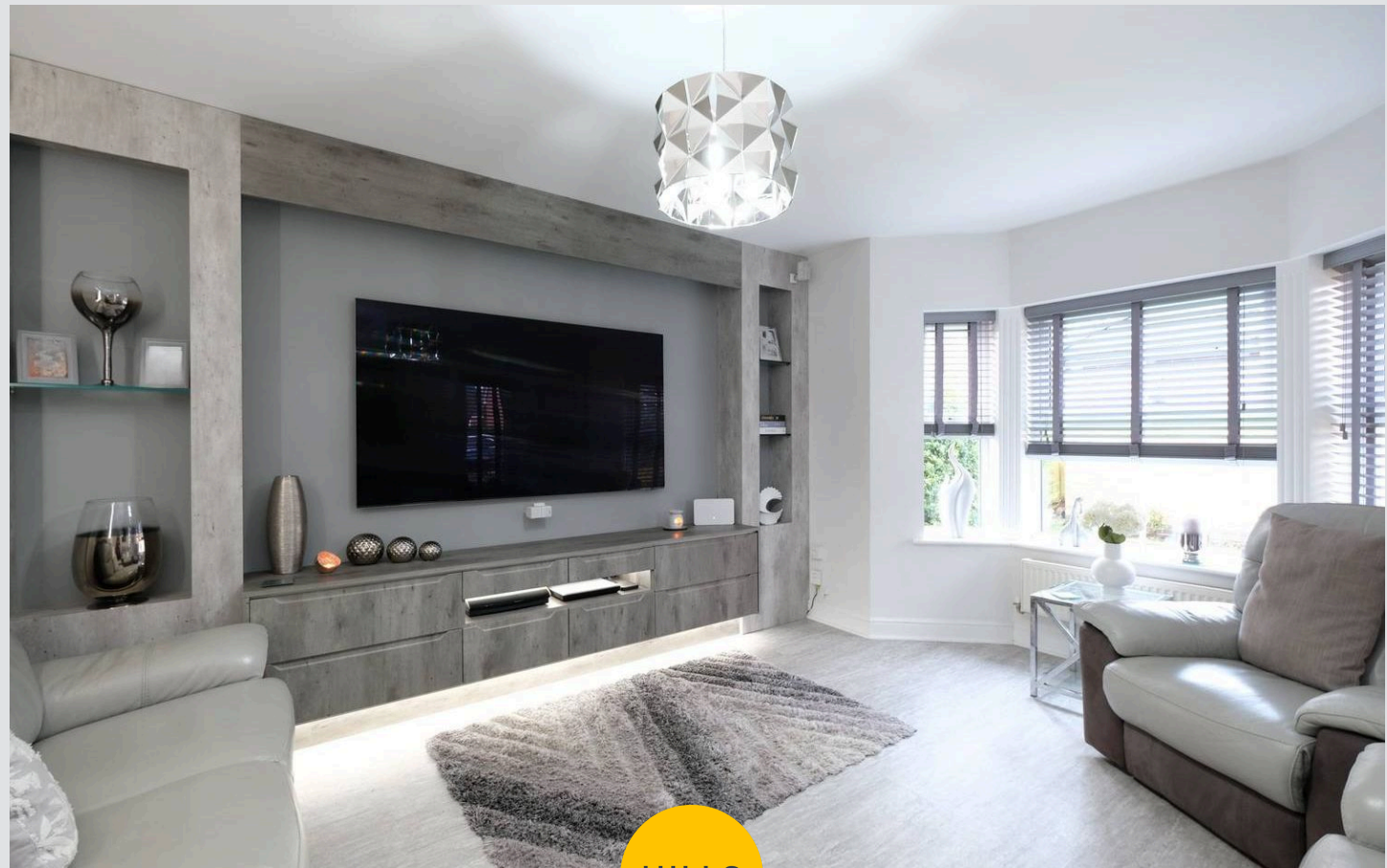
Eccles, Manchester

Exceptional five-bedroom detached home in Ellesmere Park, beautifully presented over three floors. Elegant interiors, spacious bedrooms, luxury bathrooms, double garage, and private garden. Perfect blend of style and comfort in a sought-after location.

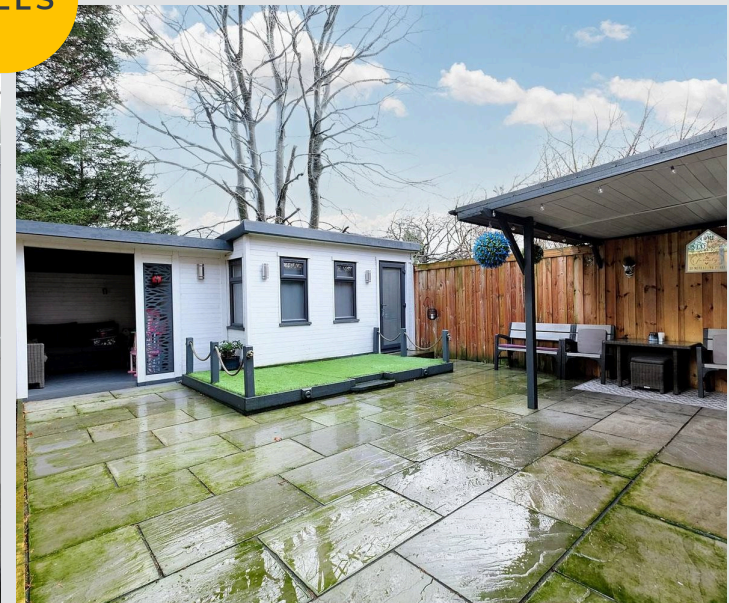
Council Tax band: E

Tenure: Leasehold

- Tucked away on a Desirable Cul De Sac within the Tree Lined Streets of Ellesmere Park
- Fabulous Five Bedroom Family Home Laid over Three Floors
- Presented to a Show Home Standard Throughout
- Bay Fronted Family Lounge along with a Bespoke Fitted Kitchen/ Dining Space
- Five Generous Bedrooms, Three with Fitted Wardrobes
- Family Bathroom, Guest W.C. & Two Ensuite Bathrooms
- Well Kept Garden to the Front with a Double Garage & Off Road Parking for Multiple Cars
- Low Maintenance, Private Rear Garden with artificial Lawn, Summer House & Sheltered Seating Areas
- Surrounded by Excellent Local Amenities, Brilliant Transport Links and just a Short Walk into Monton Village



HILLS



Entrance Hallway

A welcoming entrance hallway entered via a composite front door. Complete with a ceiling light point, double glazed window, wall mounted radiator and storage. Fitted with part tiled walls and tiled flooring.

Lounge

15' 8" x 12' 11" (4.78m x 3.94m)

Featuring a modern media wall. Complete with a ceiling light point, double glazed window, double glazed bay window and wall mounted radiator. Fitted with luxury vinyl tile flooring.

Kitchen

17' 8" x 12' 2" (5.38m x 3.71m)

Featuring modern wall and base units with a quartz worktop and sunken composite sink. Gas range with five ring gas hob, integral floor to ceiling fridge freezer, washing machine and dryer. Complete with a ceiling light point, ceiling spotlights, double glazed window, Bose sound system, French doors and wall mounted radiator. Fitted with tiled flooring.

Guest W.C.

5' 0" x 4' 4" (1.52m x 1.32m)

Featuring a two piece suite including a hand wash basin and W.C. Complete with a ceiling light point, double glazed window and heated towel rail. Fitted with tiled walls and flooring.

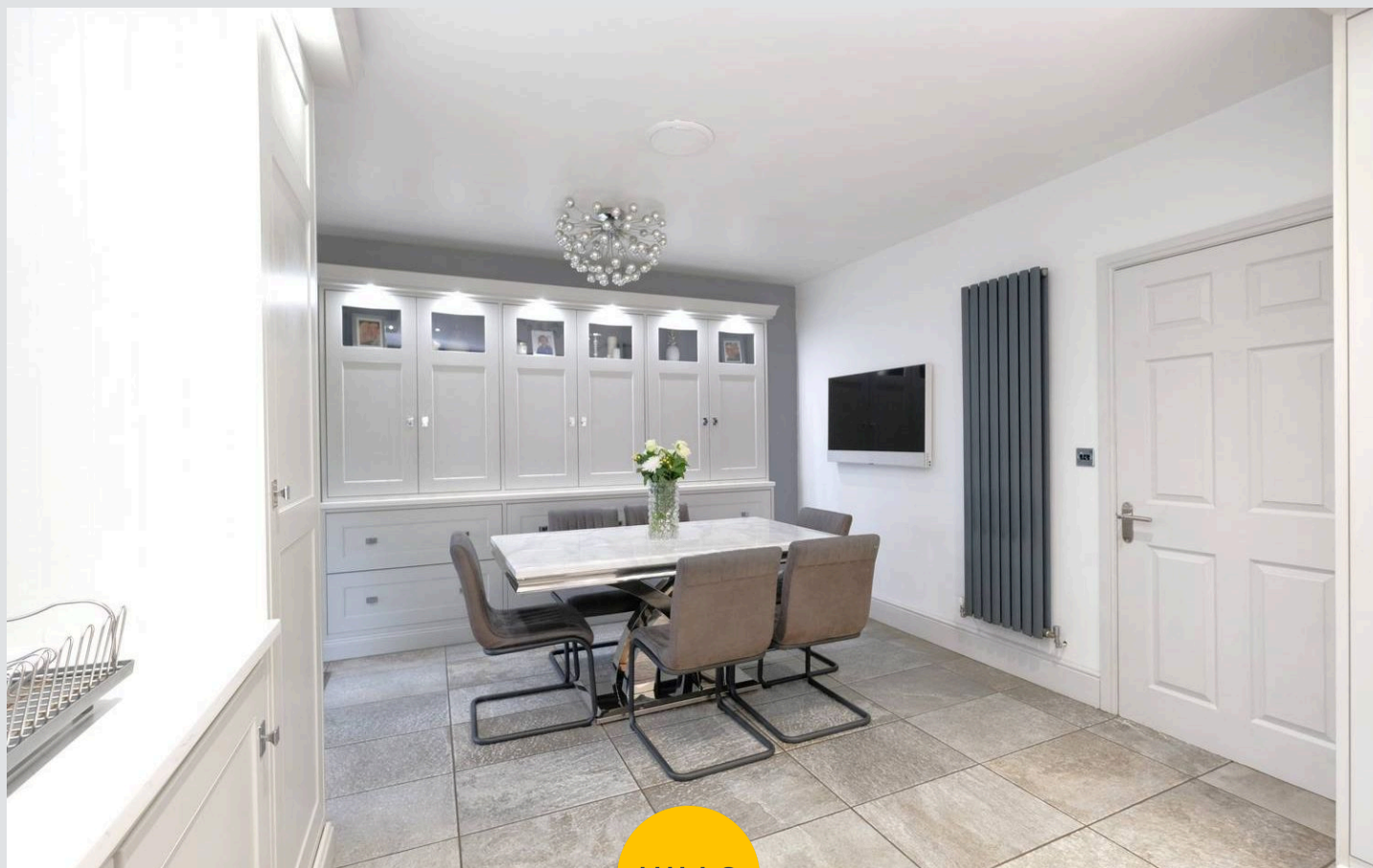
Landing

Complete with a double glazed window, wall mounted radiator and storage. Fitted with carpet flooring.

Bedroom Two

12' 10" x 12' 6" (3.91m x 3.81m)

Featuring fitted wardrobes. Complete with a ceiling light point, double glazed bay window and wall mounted radiator. Fitted with carpet flooring.



HILLS



En suite

6' 2" x 4' 9" (1.88m x 1.45m)

Featuring a three piece suite including a three piece suite including shower cubicle, hand wash basin and W.C. Complete with ceiling spotlights, double glazed window and heated towel rail. Fitted with part tiled walls and tiled flooring.

Bedroom Three

8' 5" x 8' 2" (2.57m x 2.49m)

Featuring fitted wardrobes. Complete with a ceiling light point, double glazed window and wall mounted radiator. Fitted with carpet flooring.

Bedroom Four

11' 4" x 8' 9" (3.45m x 2.67m)

Featuring fitted wardrobes and fitted desk. Complete with a ceiling light point, ceiling spotlights, double glazed window and wall mounted radiator. Fitted with luxury vinyl tile flooring.

Bedroom Five

12' 2" x 6' 0" (3.71m x 1.83m)

Complete with a ceiling light point, two double glazed windows and wall mounted radiator. Fitted with carpet flooring.

Family Bathroom

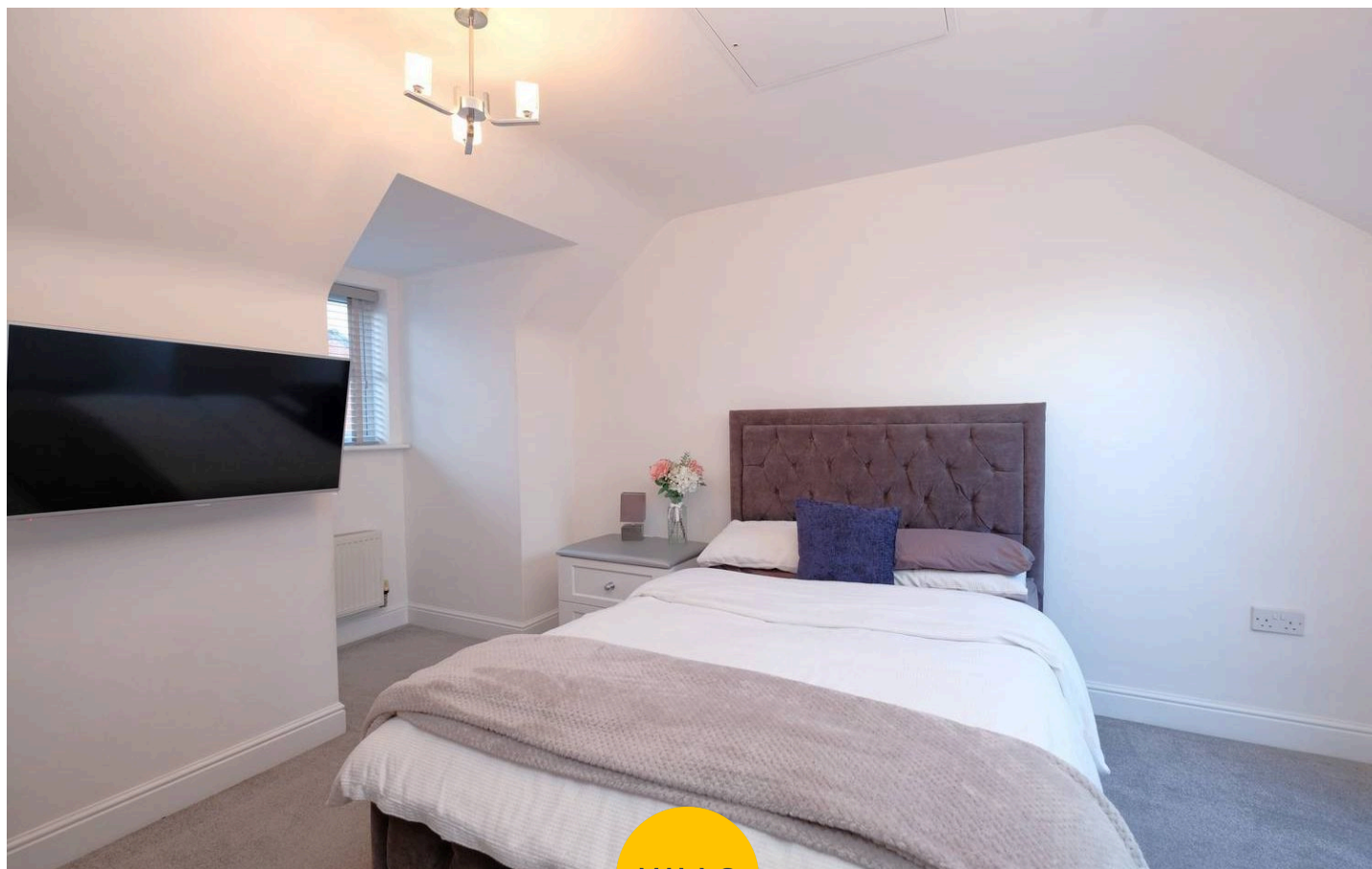
7' 9" x 6' 6" (2.36m x 1.98m)

Featuring a contemporary three piece suite including a bath with shower over, vanity unit with hand wash basin and W.C. Complete with a double glazed window, heated towel rail and storage. Fitted with tiled walls and flooring.

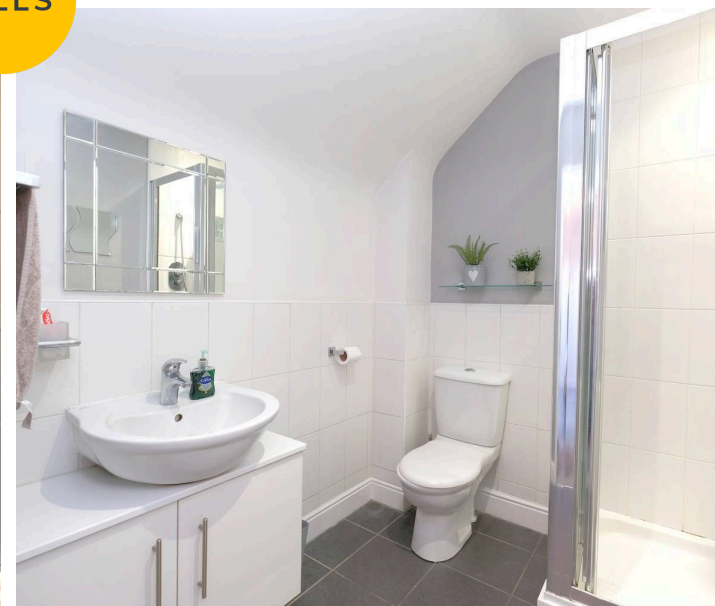
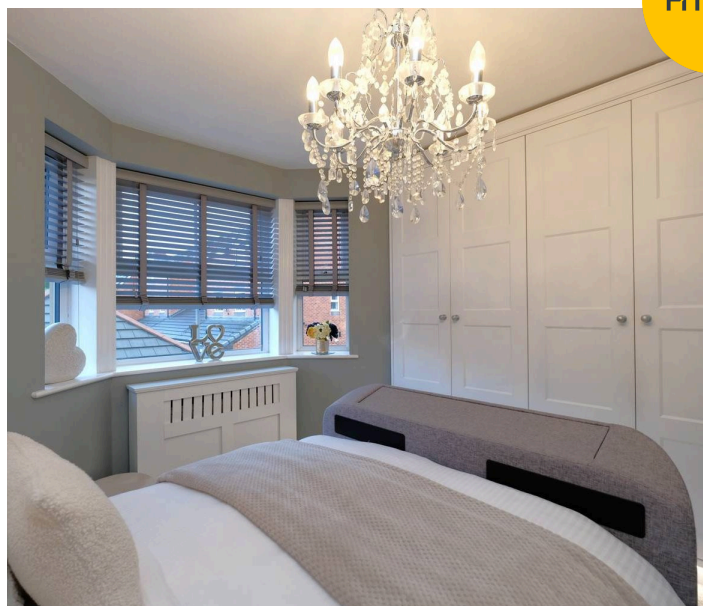
Bedroom One (Second Floor)

17' 1" x 12' 2" (5.21m x 3.71m)

A spacious master bedroom complete with two ceiling light points, Velux window, double glazed window and two wall mounted radiators. Fitted with carpet flooring. Storage within the eaves and loft access.



HILLS



En suite

6' 8" x 5' 9" (2.03m x 1.75m)

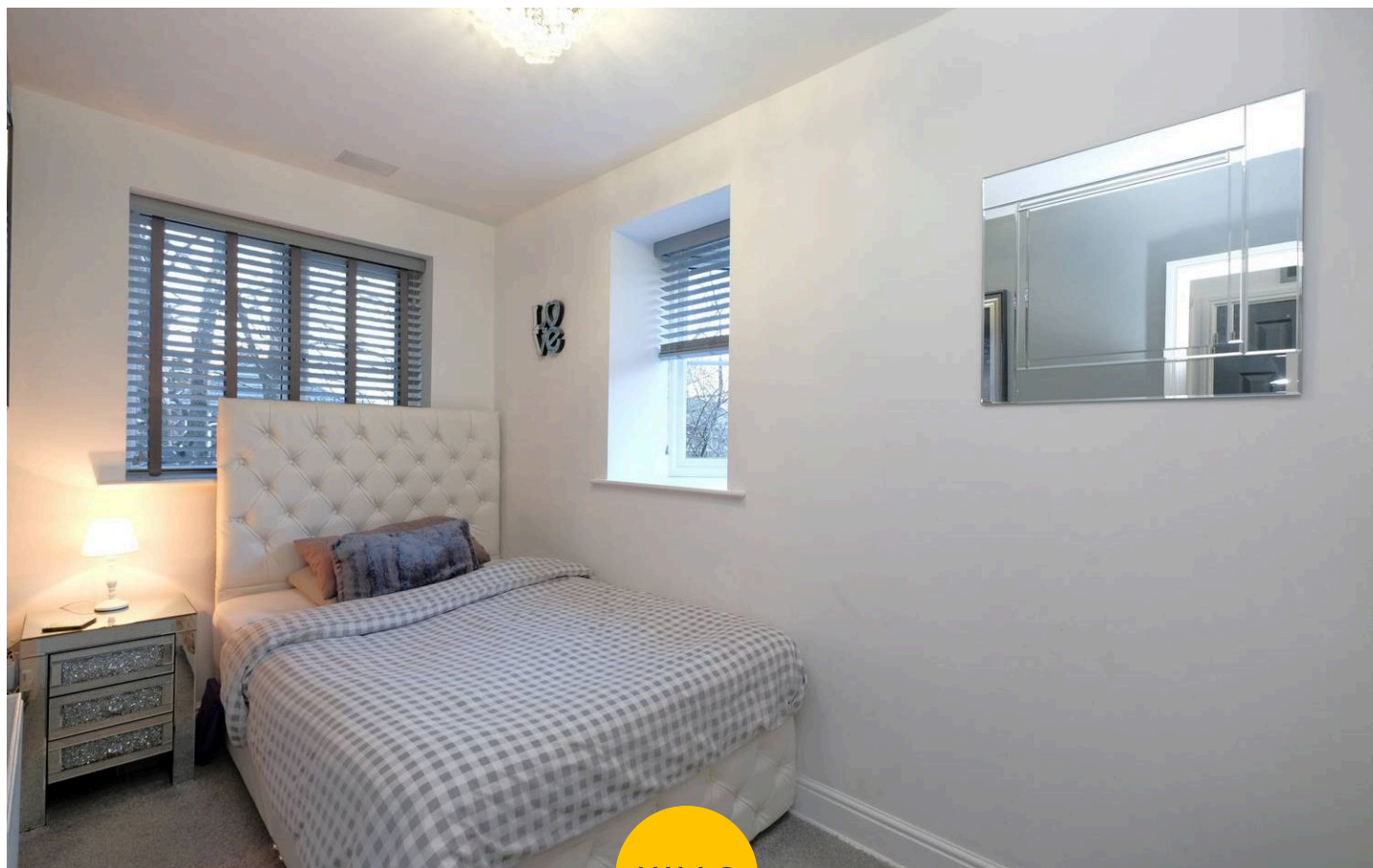
Featuring a three piece suite including a shower cubicle, hand wash basin and W.C. Complete with ceiling spotlights, wall mounted radiator, part tiled walls and tiled flooring.

Summer House

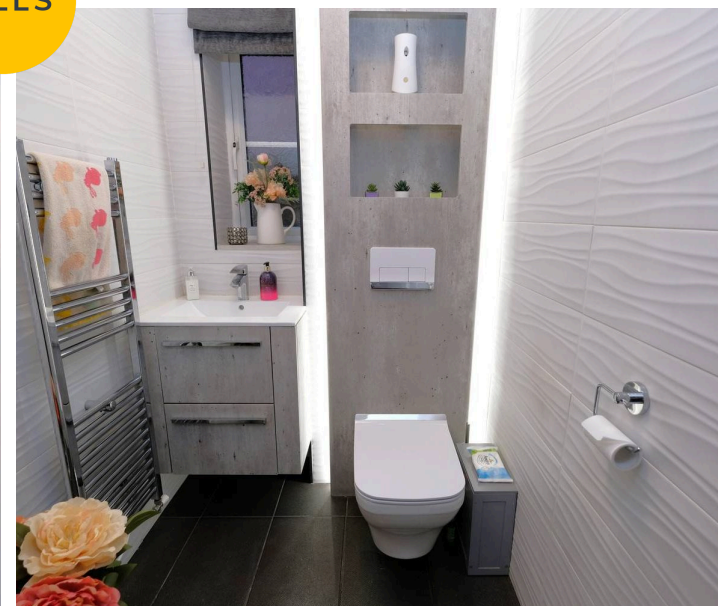
Entered via a uPVC front door. Complete with ceiling spotlights, three double glazed windows and composite decking flooring.

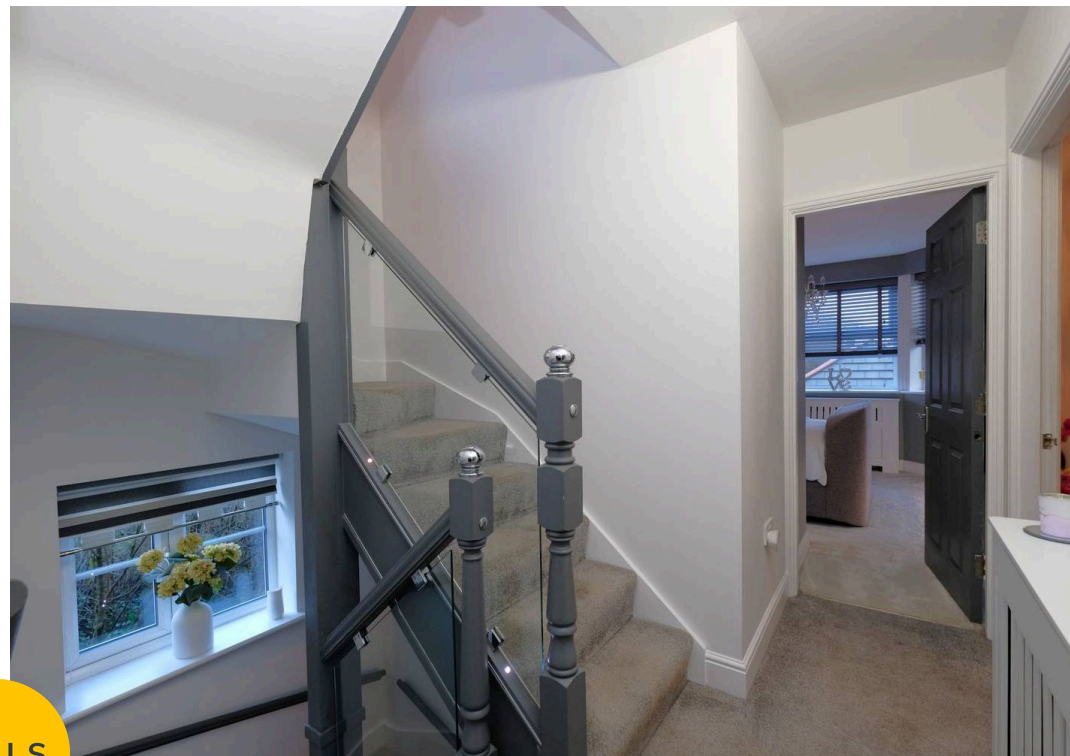
External

To the front of the property is a driveway providing off road parking for multiple cars with double detached garage and lawn with paved path. To the rear of the property is a garden with Indian stone paving, raised artificial lawn and composite decked, sheltered seating area complete with two wall light points and storage. Gated front access.



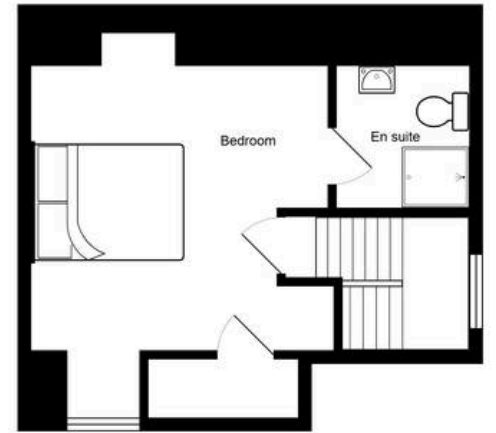
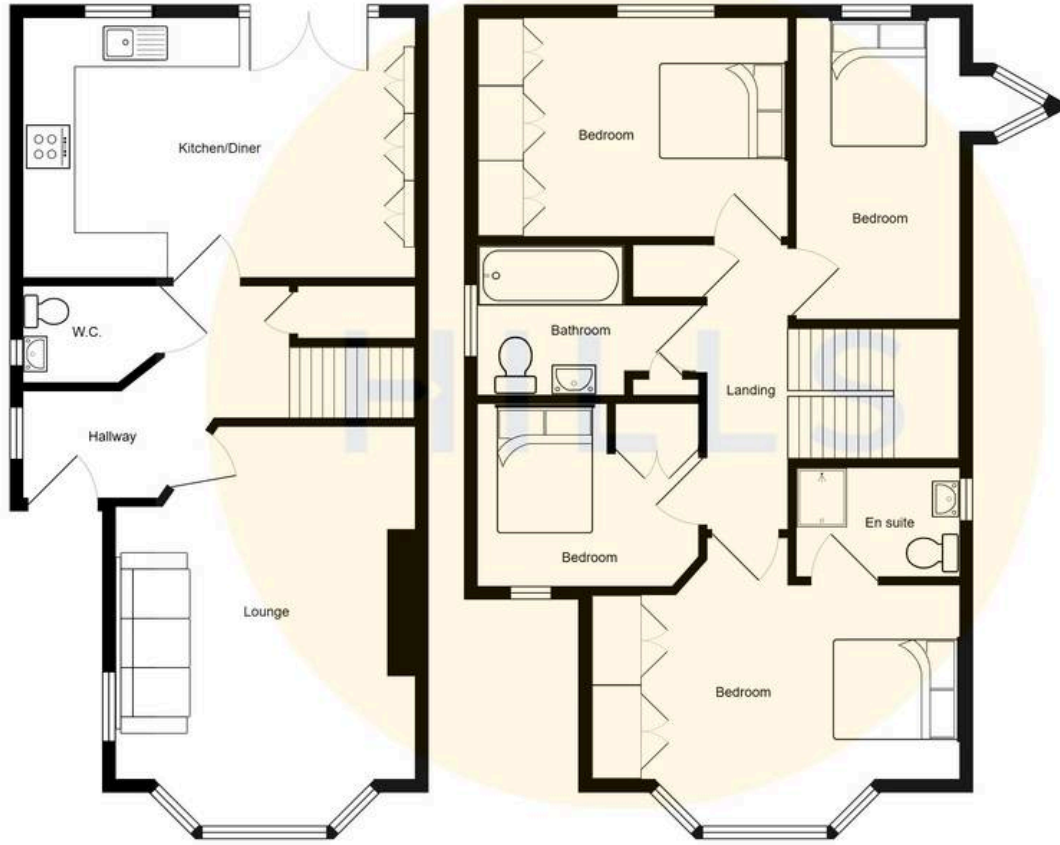
HILLS





HILLS







Hills | Salfords Estate Agent

Hills Residential, Sentinel House Albert Street - M30 0SS

0161 707 4900

sales@hills.agency

www.hills.agency/



THE PROPERTY MISDESCRIPTIONS ACT 1991 The Agent has not tested any apparatus, equipment, fixtures and fittings or services and so cannot verify that they are in working order or fit for the purpose. A Buyer is advised to obtain verification from their Solicitor or Surveyor. References to the Tenure of a Property are based on information supplied by the Seller. The Agent has not had sight of the title documents. A Buyer is advised to obtain verification from their Solicitor. You are advised to check the availability of this property before travelling any distance to view. Every effort and precaution has been made to ensure these particulars are correct and not misleading but their accuracy is not guaranteed nor do they form part of any contract. If there is any point which is of particular importance to you, please contact us and we will provide any information you require. This is advisable, particularly if you intend to travel some distance to view the property. The mention of any appliances and services within these details does not imply that they are in full and efficient working order. These particulars are in draft form awaiting Vendors confirmation of their accuracy. These details must therefore be taken as a guide only.