



Harvard Grove

Salford



In Excess of **£140,000**

Harvard Grove

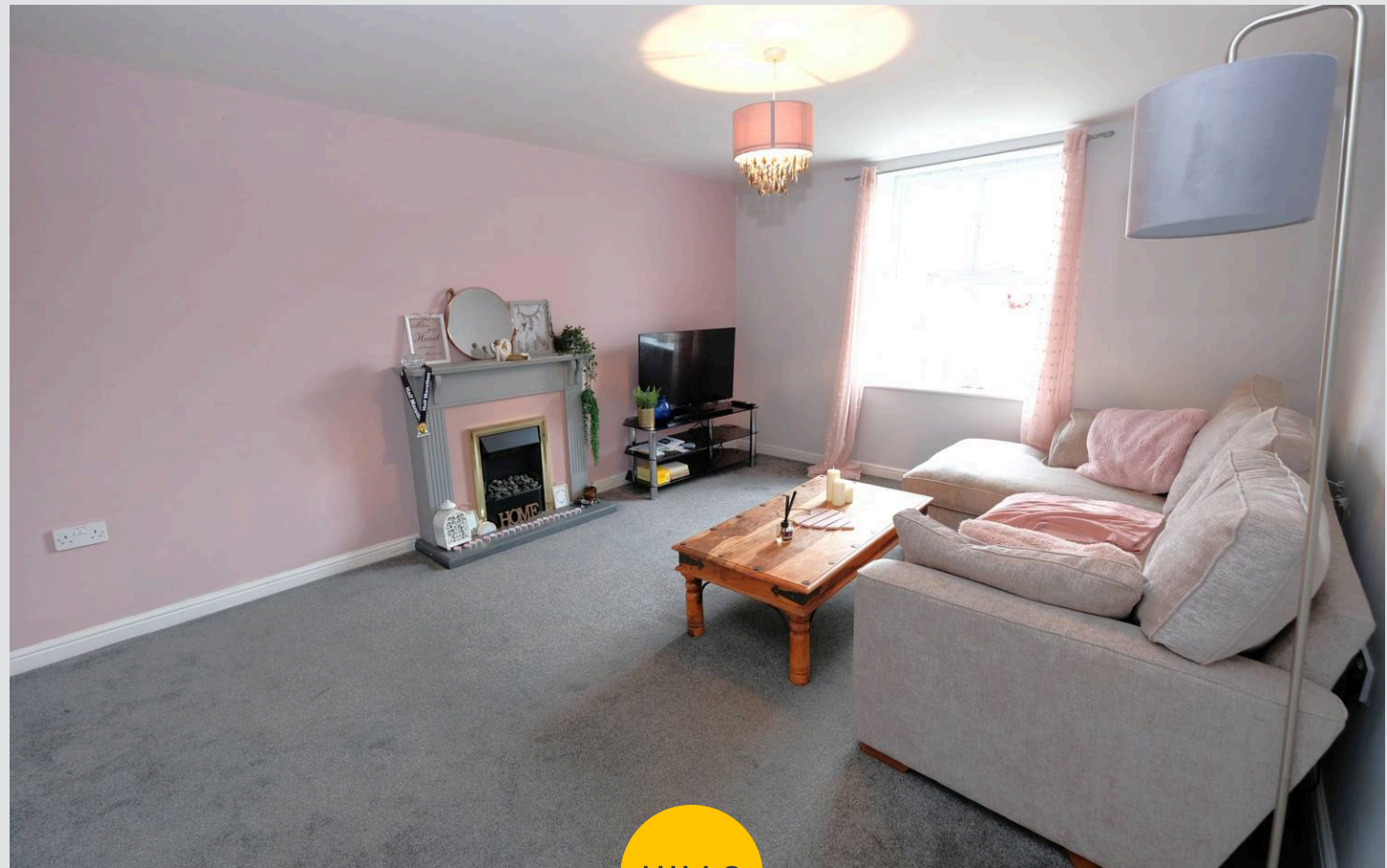
Salford

Amazing Investment Opportunity! 2 Bedroom Flat in Prime Location, Walking distance to Salford Royal and with Excellent Transport Links to Media City and Manchester City Centre!

Council Tax band: B

Tenure: Leasehold

- Fantastic two bedroom first floor flat
- Well presented fitted kitchen
- Two well proportioned bedrooms
- Three-piece bathroom suite
- Parking included
- Coming to the market with no vendor chain
- Within easy access of excellent transport links into Salford Quays, Media City and Manchester City Centre
- Within walking distance to Buile Hill Park
- Well kept communal areas
- Amazing investment opportunity or perfect for first time buyers!



HILLS

Entrance Hallway

Complete with a ceiling light point, storage cupboard and electric heater. Fitted with carpet flooring.

Lounge

14' 11" x 11' 9" (4.54m x 3.59m)

Complete with a ceiling light point, double glazed window and electric heater. Fitted with carpet flooring.

Kitchen

9' 5" x 9' 9" (2.88m x 2.96m)

Featuring complementary wall and base units with extractor fan. Space for oven, hob and undercounter fridge freezer. Complete with a ceiling light point, double glazed window and lino flooring.

Bedroom One

11' 8" x 10' 1" (3.56m x 3.07m)

Complete with a ceiling light point, two double glazed windows and electric heater. Fitted with carpet flooring.

Bedroom Two

10' 1" x 9' 6" (3.08m x 2.90m)

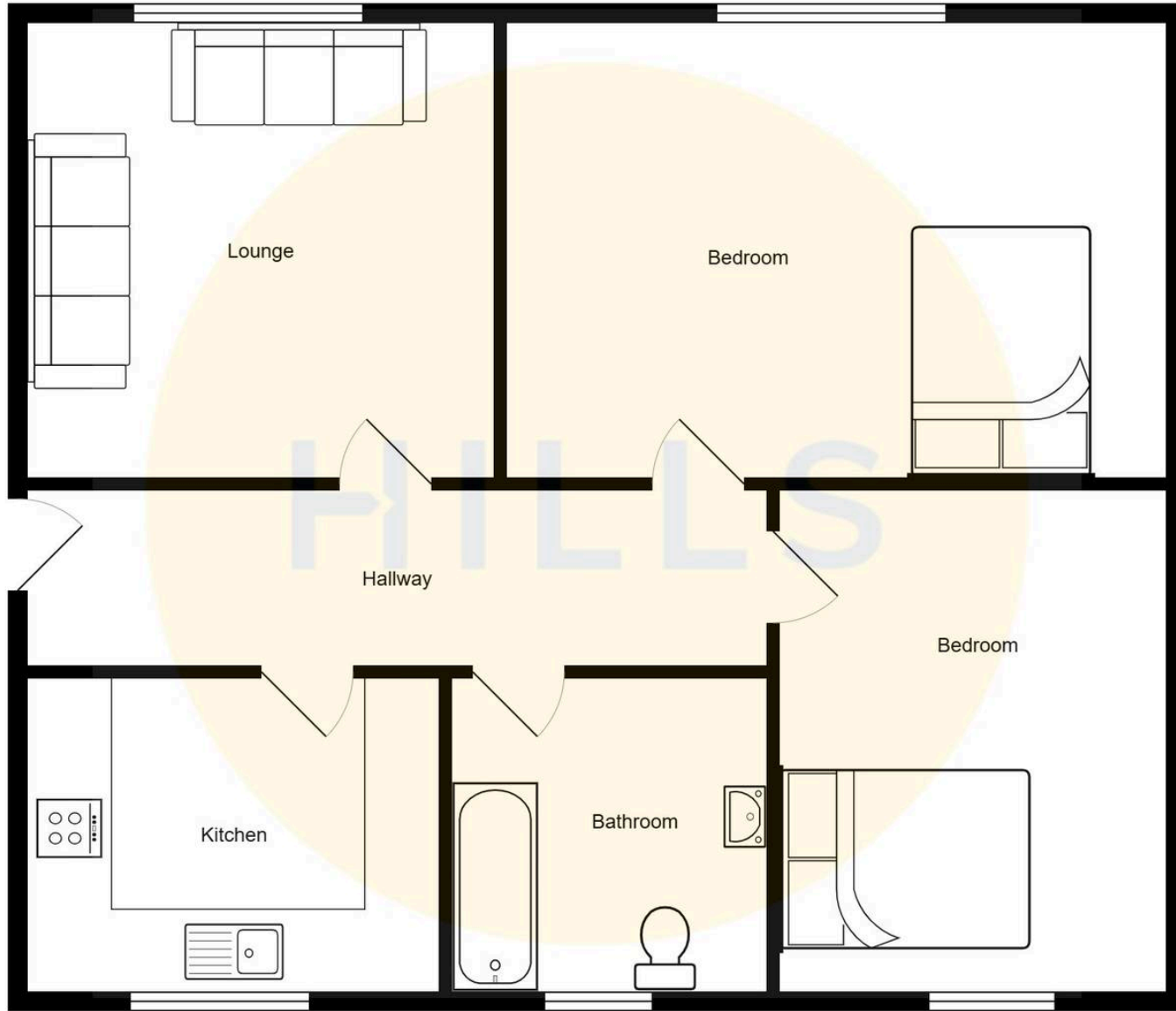
Complete with a ceiling light point, double glazed window and electric radiator. Fitted with carpet flooring.

Bathroom

6' 1" x 6' 1" (1.85m x 1.85m)

Featuring a three piece suite including a bath with shower over, hand wash basin and W.C. Complete with a ceiling light point, extractor, double glazed window and laminate flooring.







HILLS

Hills | Salfords Estate Agent

Hills Residential, Sentinel House Albert Street – M30 0SS

0161 707 4900

sales@hills.agency

www.hills.agency/



THE PROPERTY MISDESCRIPTIONS ACT 1991 The Agent has not tested any apparatus, equipment, fixtures and fittings or services and so cannot verify that they are in working order or fit for the purpose. A Buyer is advised to obtain verification from their Solicitor or Surveyor. References to the Tenure of a Property are based on information supplied by the Seller. The Agent has not had sight of the title documents. A Buyer is advised to obtain verification from their Solicitor. You are advised to check the availability of this property before travelling any distance to view. Every effort and precaution has been made to ensure these particulars are correct and not misleading but their accuracy is not guaranteed nor do they form part of any contract. If there is any point which is of particular importance to you, please contact us and we will provide any information you require. This is advisable, particularly if you intend to travel some distance to view the property. The mention of any appliances and services within these details does not imply that they are in full and efficient working order. These particulars are in draft form awaiting Vendors confirmation of their accuracy. These details must therefore be taken as a guide only.