

11 Higher Croft, Eccles

Manchester



In Excess of £180,000

11 Higher Croft

Eccles, Manchester

Spacious end of terrace house in Peel Green area. Two reception rooms, modern kitchen and conservatory. Two double bedrooms, contemporary bathroom. Quiet cul-de-sac near Trafford Centre. Council Tax band: A

Tenure: Freehold

- Deceptively Spacious End of Terrace Property, Located in the Popular Peel Green Area
- Two reception Rooms Offering Versatile Living Space
- Fitted Modern Kitchen Open Plan with The Conservatory
- Two Double Bedrooms Complete with Fitted wardrobes
- Four Piece Contemporary Bathroom Suite
- Low Maintenance Garden to the Rear
- Situated on s Cul De Sac, just a Short Walk from The Trafford Centre
- Surrounded by Brilliant Amenities & Transport Links



HILLS

Entrance Hallway

Complete with a ceiling light point, wall mounted radiator and carpet flooring.

Reception Room One

11' 3" x 10' 8" (3.43m x 3.25m)

Complete with a gas fire, double glazed window and wall mounted radiator. Fitted with carpet flooring.

Reception Room Two

12' 3" x 11' 8" (3.73m x 3.56m)

Featuring a gas fire. Complete with a ceiling light point, double glazed window and wall mounted radiator. Fitted with carpet flooring.

Kitchen

8' 8" x 7' 8" (2.64m x 2.34m)

Featuring complementary wall and base units with gas hob and electric oven. Space for a washing machine and fridge freezer.

Complete with a ceiling light point, part tiled walls and tiled flooring. Boiler.

Conservatory

8' 2" x 7' 9" (2.49m x 2.36m)

Complete with a wall light point, French doors and tiled flooring.



HILLS

Landing

Complete with a ceiling light point, wall mounted radiator and carpet flooring. Loft access.

Bedroom One

13' 6" x 11' 1" (4.11m x 3.38m)

Featuring fitted wardrobes. Complete with a ceiling light point, two double glazed windows and wall mounted radiator. Fitted with carpet flooring.

Bedroom Two

12' 8" x 9' 4" (3.86m x 2.84m)

Featuring fitted wardrobes. Complete with a ceiling light point, double glazed window and wall mounted radiator. Fitted with carpet flooring.

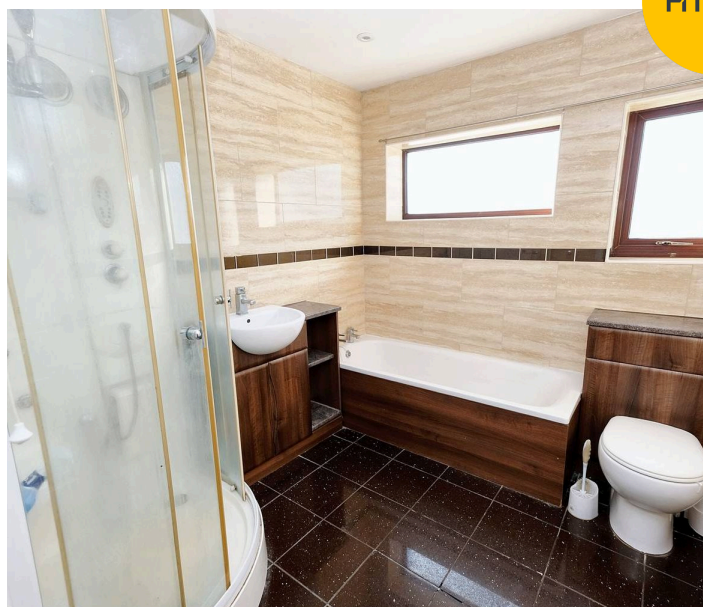
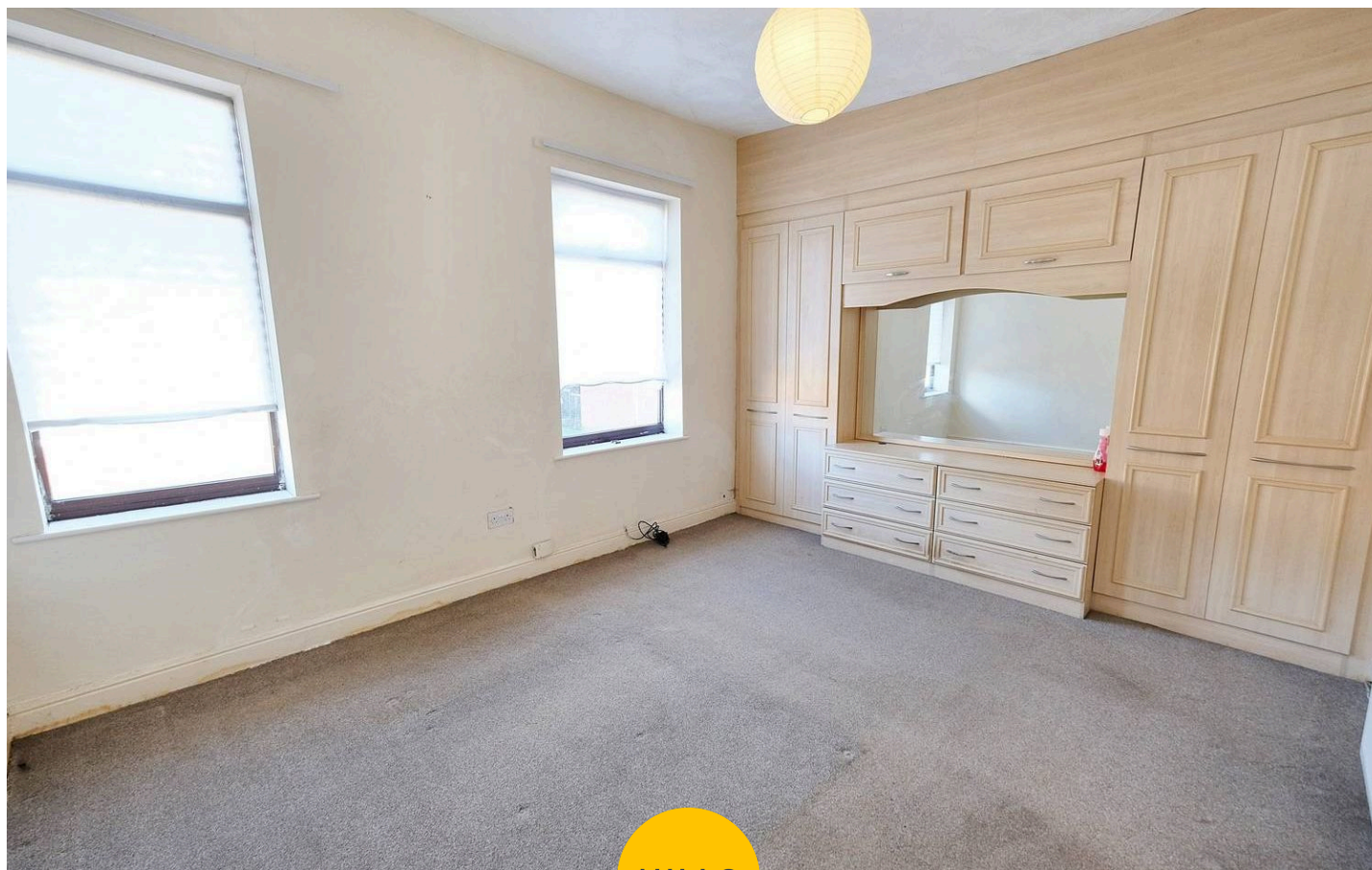
Bathroom

8' 5" x 7' 6" (2.57m x 2.29m)

Featuring a four piece suite including jacuzzi bath, shower cubicle, vanity unit with hand wash basin and W.C. Complete with ceiling spotlights, tiled walls and flooring.

External

To the rear of the property is a garden with raised concrete area, decorative stone and raised stepping stones.

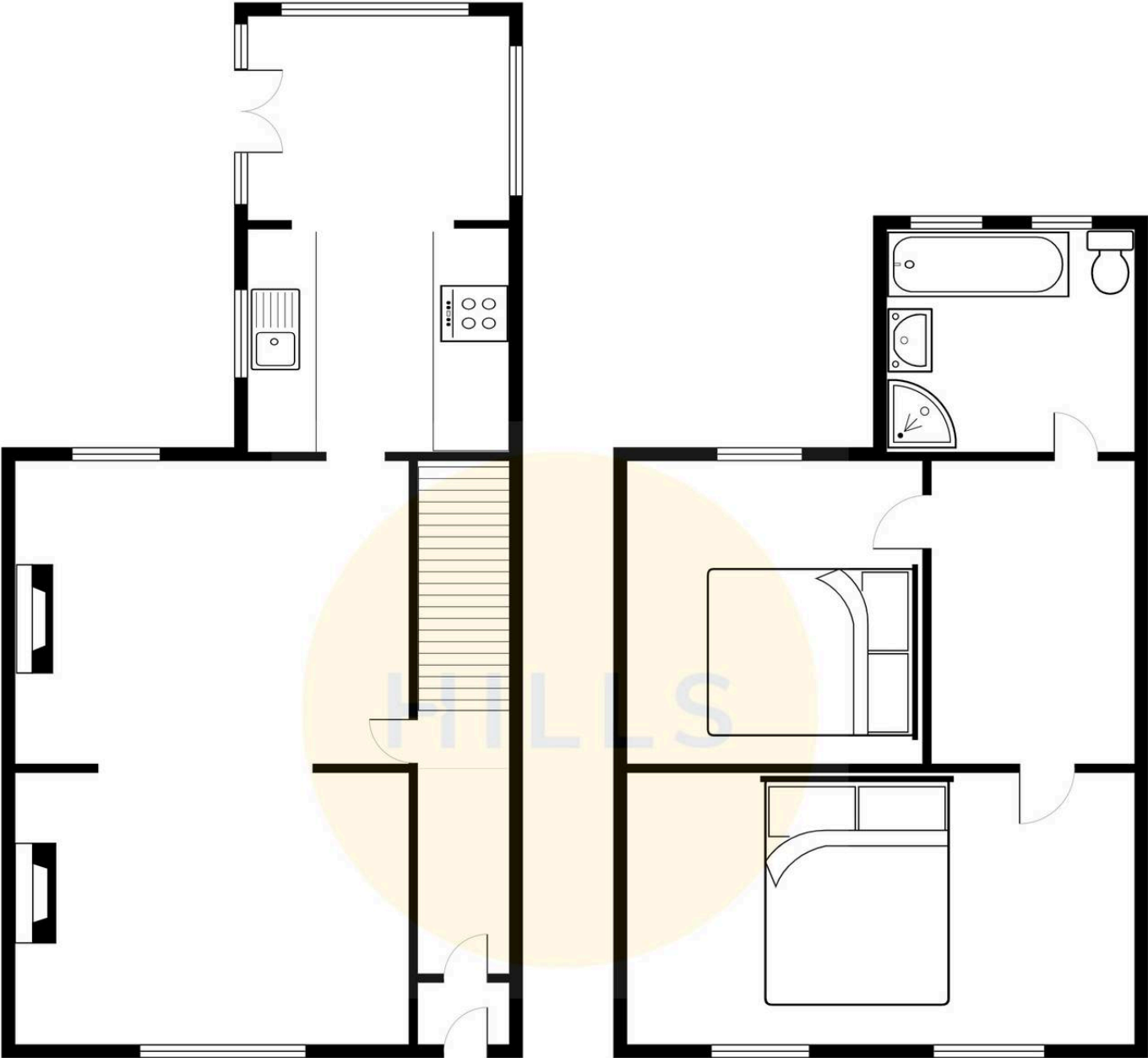


HILLS



HILLS







Hills | Salfords Estate Agent

Hills Residential, Sentinel House Albert Street - M30 0SS

0161 707 4900

sales@hills.agency

www.hills.agency/



THE PROPERTY MISDESCRIPTIONS ACT 1991 The Agent has not tested any apparatus, equipment, fixtures and fittings or services and so cannot verify that they are in working order or fit for the purpose. A Buyer is advised to obtain verification from their Solicitor or Surveyor. References to the Tenure of a Property are based on information supplied by the Seller. The Agent has not had sight of the title documents. A Buyer is advised to obtain verification from their Solicitor. You are advised to check the availability of this property before travelling any distance to view. Every effort and precaution has been made to ensure these particulars are correct and not misleading but their accuracy is not guaranteed nor do they form part of any contract. If there is any point which is of particular importance to you, please contact us and we will provide any information you require. This is advisable, particularly if you intend to travel some distance to view the property. The mention of any appliances and services within these details does not imply that they are in full and efficient working order. These particulars are in draft form awaiting Vendors confirmation of their accuracy. These details must therefore be taken as a guide only.