



Vestry Court, John William Street

Manchester



£130,000

Vestry Court

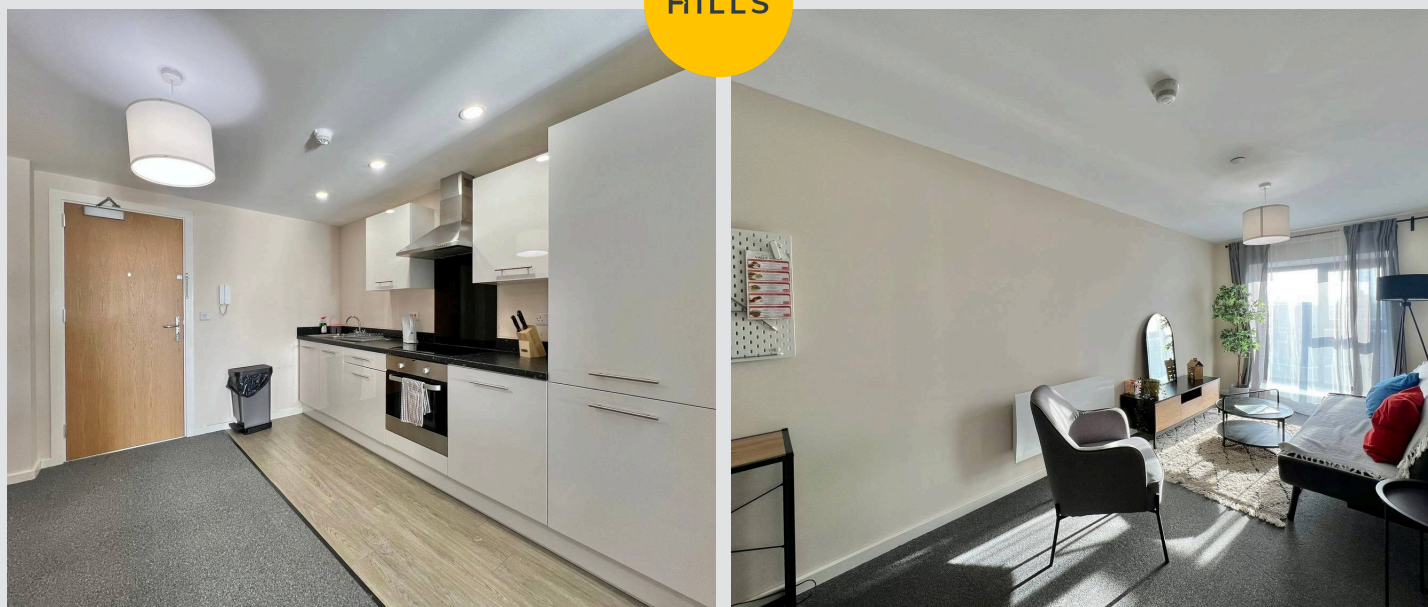
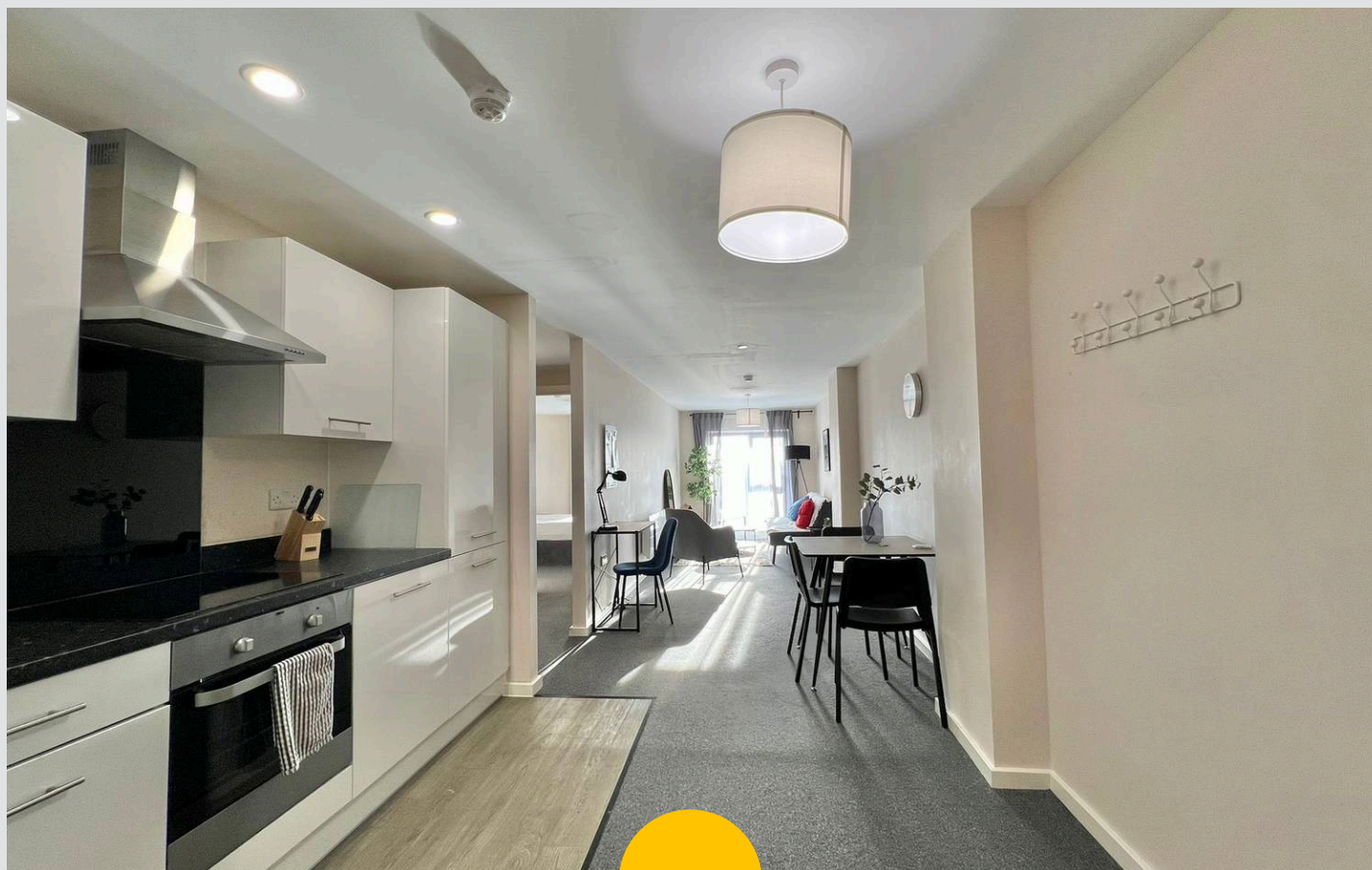
Manchester

Modern second-floor apartment in central Eccles, featuring open-plan kitchen/living/dining, spacious bedroom with floor-to-ceiling windows, contemporary bathroom. Surrounded by amenities and excellent transport links. Ideal for first-time buyers or investors.

Council Tax band: A

Tenure: Leasehold

- Immaculately Presented Second Floor Apartment
- Open Plan Kitchen, Living and Dining Space
- Spacious Bedroom with Floor to Ceiling Windows
- Modern Three Piece Bathroom Suite
- Excellently Located in the Centre of Eccles
- Surrounded by a Plethora of Amenities and Brilliant Public Transport Links
- Perfect First Time Buy or Investment



Entrance Hallway

A welcoming hallway complete with two ceiling light points and carpet flooring. Double storage cupboard and utility cupboard with plumbing for a washing machine.

Lounge

18' 5" x 7' 9" (5.61m x 2.36m)

Complete with a ceiling light point, floor to ceiling double glazed window and electric radiator. Fitted with carpet flooring.

Kitchen / Diner

11' 1" x 10' 1" (3.38m x 3.07m)

Featuring complementary wall and base units with integral stainless steel sink, fridge freezer, electric hob and oven. Complete with ceiling spotlights, ceiling light point and luxury vinyl tile flooring.

Bedroom One

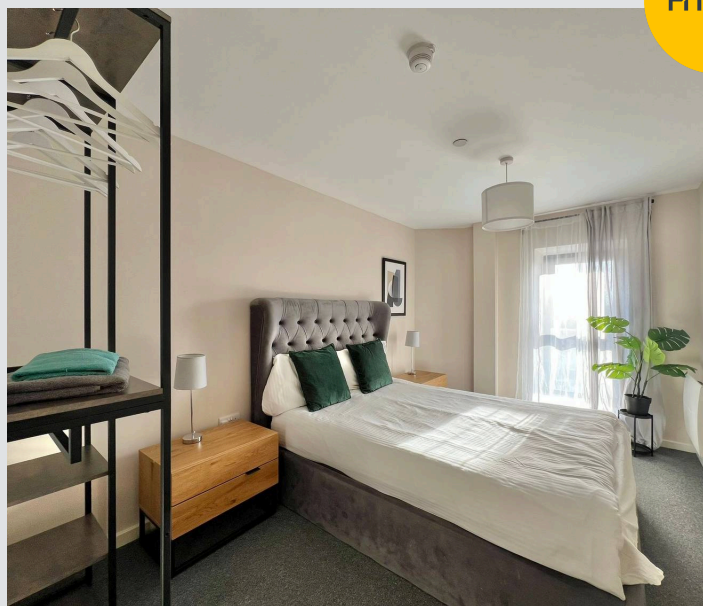
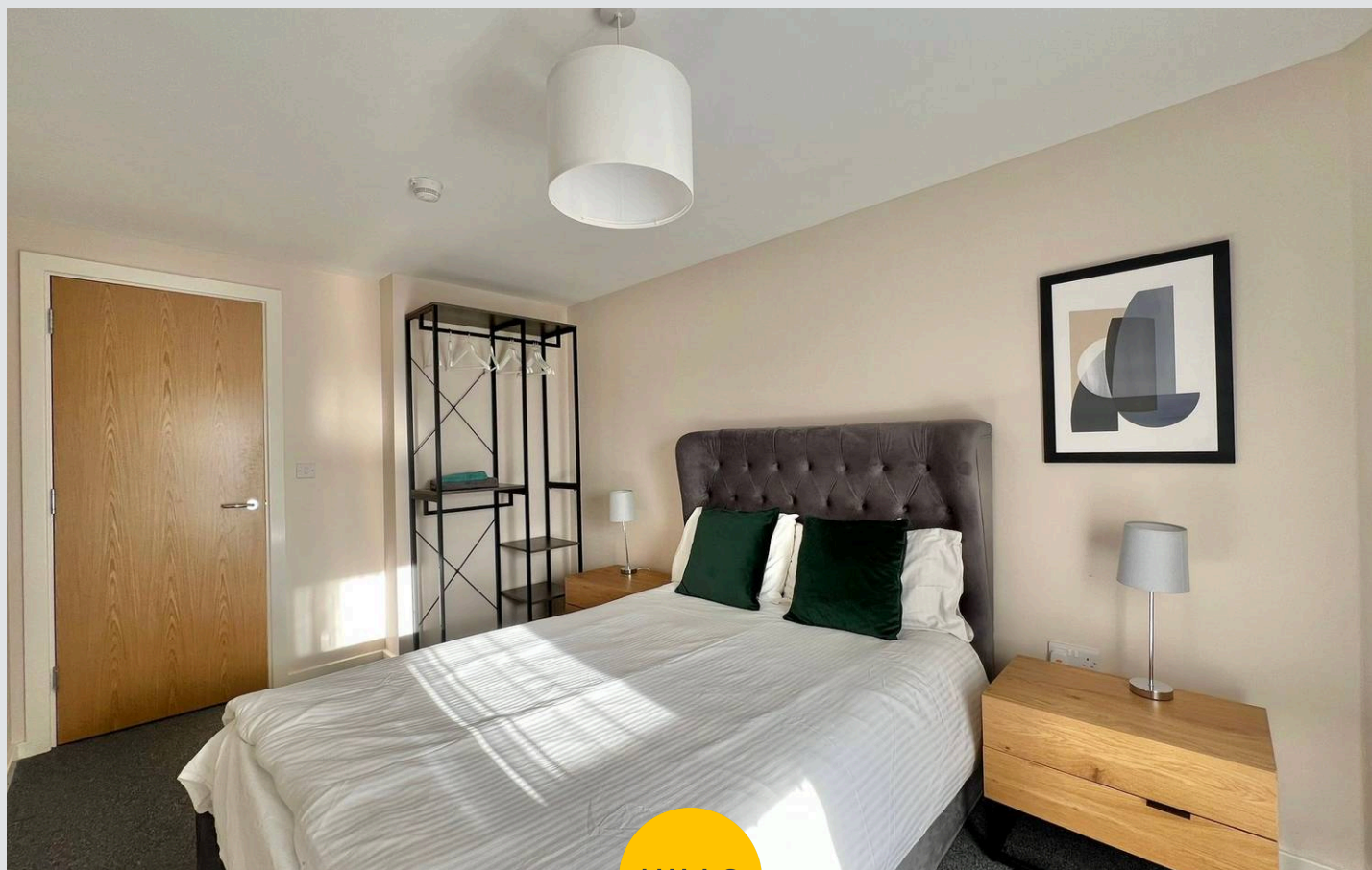
13' 3" x 8' 5" (4.04m x 2.57m)

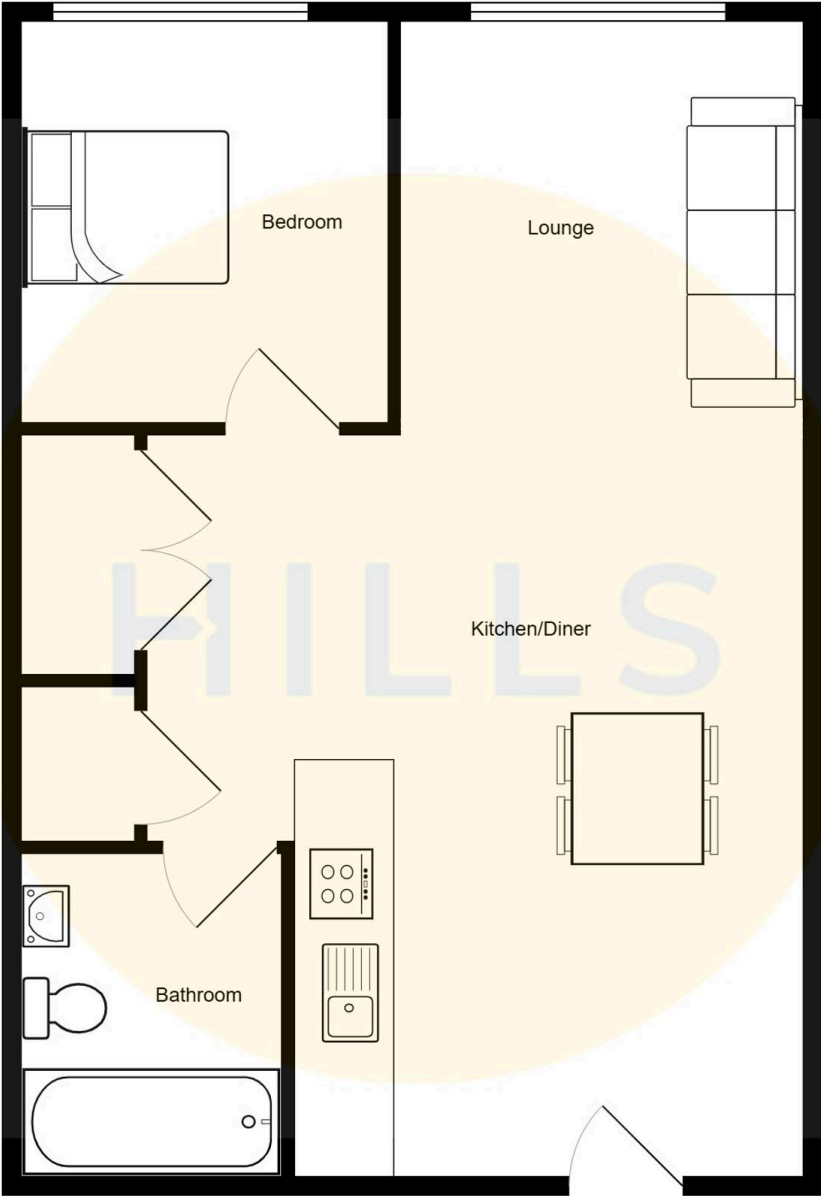
Complete with a ceiling light point, floor to ceiling double glazed window and electric radiator. Fitted with carpet flooring.

Bathroom

7' 8" x 5' 6" (2.34m x 1.68m)

Featuring a three piece suite including bath with shower over, vanity unit hand wash basin and W.C. Complete with ceiling spotlights, heated towel rail, part tiled walls and cushioned flooring.







HILLS

Hills | Salfords Estate Agent

Hills Residential, Sentinel House Albert Street – M30 0SS

0161 707 4900

sales@hills.agency

www.hills.agency/



THE PROPERTY MISDESCRIPTIONS ACT 1991 The Agent has not tested any apparatus, equipment, fixtures and fittings or services and so cannot verify that they are in working order or fit for the purpose. A Buyer is advised to obtain verification from their Solicitor or Surveyor. References to the Tenure of a Property are based on information supplied by the Seller. The Agent has not had sight of the title documents. A Buyer is advised to obtain verification from their Solicitor. You are advised to check the availability of this property before travelling any distance to view. Every effort and precaution has been made to ensure these particulars are correct and not misleading but their accuracy is not guaranteed nor do they form part of any contract. If there is any point which is of particular importance to you, please contact us and we will provide any information you require. This is advisable, particularly if you intend to travel some distance to view the property. The mention of any appliances and services within these details does not imply that they are in full and efficient working order. These particulars are in draft form awaiting Vendors confirmation of their accuracy. These details must therefore be taken as a guide only.