



Apt 11, Wardley Hall Court, 518 Manches



Manchester

In Excess of £180,000

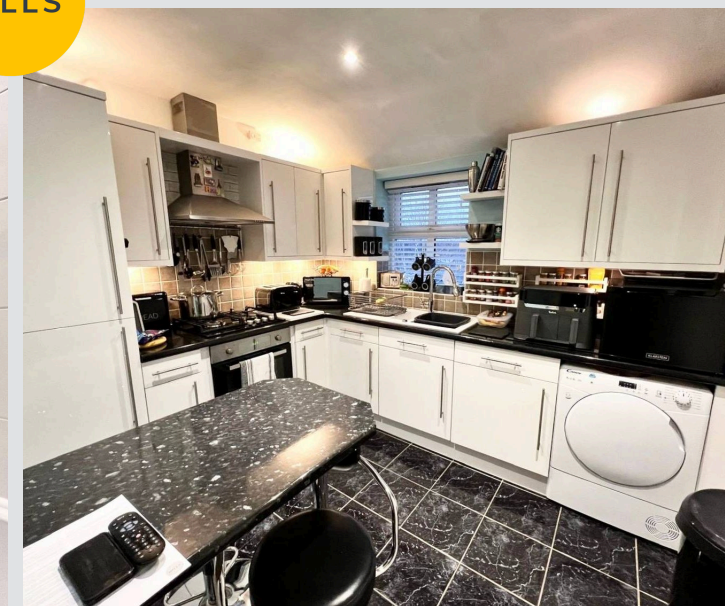
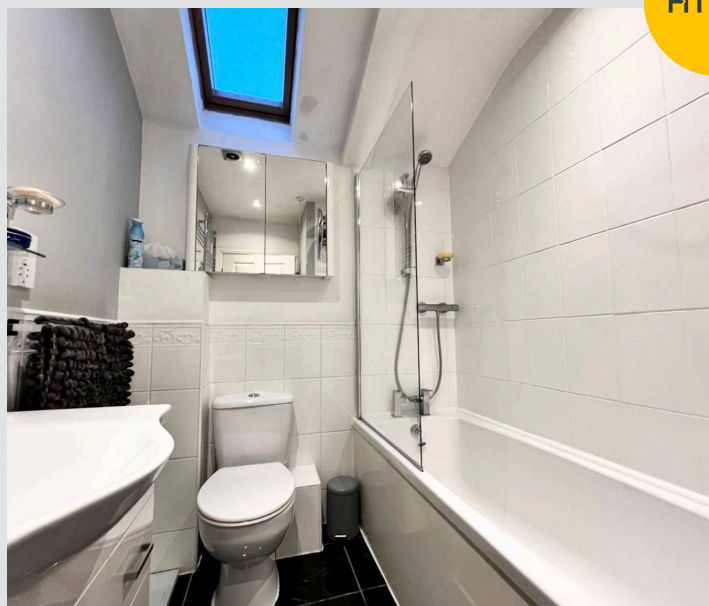
Apartment 11

Wardley Hall Court, Manchester

LOOKING FOR A HIGH SPEC APARTMENT IN THE WARDLEY AREA? A beautifully presented second floor property! Access via a secure communal entrance. The apartment offers a spacious lounge, a modern fitted kitchen, two double bedrooms, a modern bathroom and a hallway. Both bedrooms Council Tax band: B

Tenure: Leasehold

- VERY IMPRESSIVE SECOND FLOOR APARTMENT
- MODERN FIXTURES AND FITTINGS THROUGHOUT
- TWO DOUBLE BEDROOMS WITH MODERN FITTED WARDROBES
- NEW BOILER
- SIX NEW RADIATORS AND TOWEL RAIL
- UPVC DOUBLE GLAZED
- RESIDENTS PARKING



HILLS

Lounge

12' 6" x 12' 2" (3.80m x 3.70m)

Kitchen

8' 2" x 9' 10" (2.50m x 3.00m)

Bedroom One

10' 10" x 12' 2" (3.30m x 3.70m)

Bedroom Two

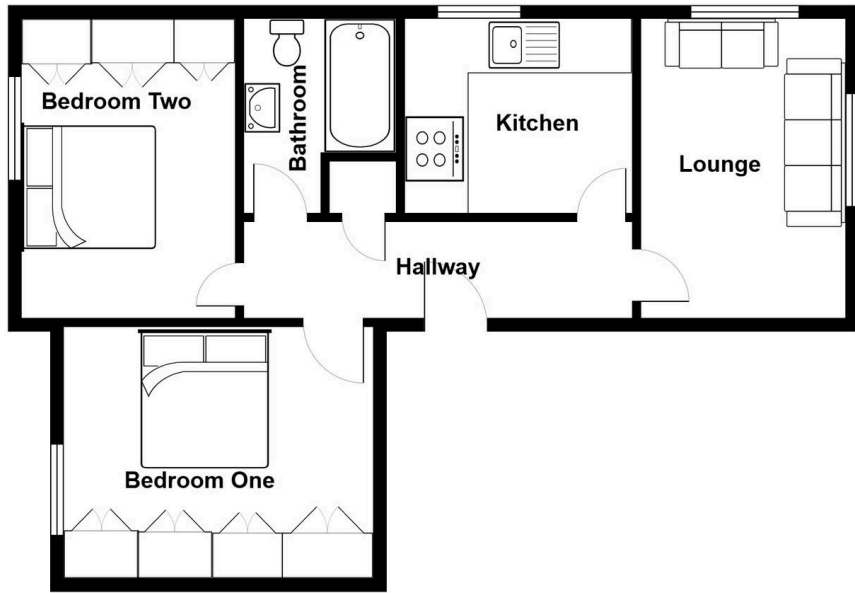
10' 6" x 8' 6" (3.20m x 2.60m)





HILLS







Hills Swinton | Salfords Estate Agent

4 Pendlebury Road, Swinton - M27 4AR

0161 794 2888

swinton@hills.agency

www.hills.agency/



THE PROPERTY MISDESCRIPTIONS ACT 1991 The Agent has not tested any apparatus, equipment, fixtures and fittings or services and so cannot verify that they are in working order or fit for the purpose. A Buyer is advised to obtain verification from their Solicitor or Surveyor. References to the Tenure of a Property are based on information supplied by the Seller. The Agent has not had sight of the title documents. A Buyer is advised to obtain verification from their Solicitor. You are advised to check the availability of this property before travelling any distance to view. Every effort and precaution has been made to ensure these particulars are correct and not misleading but their accuracy is not guaranteed nor do they form part of any contract. If there is any point which is of particular importance to you, please contact us and we will provide any information you require. This is advisable, particularly if you intend to travel some distance to view the property. The mention of any appliances and services within these details does not imply that they are in full and efficient working order. These particulars are in draft form awaiting Vendors confirmation of their accuracy. These details must therefore be taken as a guide only.