



My Street

Salford



In Excess of £210,000

# My Street

Salford

**\*\*Charming Two Bedroom End Terraced Property Located Within Walking Distance of Salford Quays & Media City!\*\***

Council Tax band: A

Tenure: Freehold

- Charming Two Bedroom End Terraced Property
- Modern Fitted Kitchen and a Stylish Bathroom with a Separate W/C
- Large Lounge Diner with Patio Doors to the Rear
- Two Generously-Sized Double Bedrooms
- Benefits from a Storage Cupboard which is Currently Used as Office Space
- Driveway to the Front for Off-Road Parking
- Well-Presented Garden to the Rear
- Within Walking Distance of Salford Quays & Media City, which are Host to a Fine Array of Bars, Shops and Restaurants
- Close to Excellent Transport Links into Salford Quays, Media City and Manchester City Centre
- Viewing is Highly Recommended!



### Reception Room

9' 11" x 20' 0" (3.03m x 6.09m)

Complete with a ceiling light point, double glazed patio doors and wall mounted radiator. Fitted with laminate flooring.

### Kitchen

8' 11" x 9' 8" (2.72m x 2.94m)

Featuring complementary wall and base units with integral cooker and hob, fridge freezer and dishwasher. Space for a washing machine. Complete with ceiling spotlights, double glazed window and luxury vinyl tile flooring.

### Landing

Complete with a ceiling light point and carpet flooring.

### Bedroom One

9' 8" x 7' 9" (2.95m x 2.35m)

Complete with a ceiling light point, double glazed window and wall mounted radiator. Fitted with carpet flooring.

### Bedroom Two

9' 11" x 11' 1" (3.02m x 3.38m)

Complete with a ceiling light point, double glazed window and wall mounted radiator. Fitted with carpet flooring.

### Bathroom

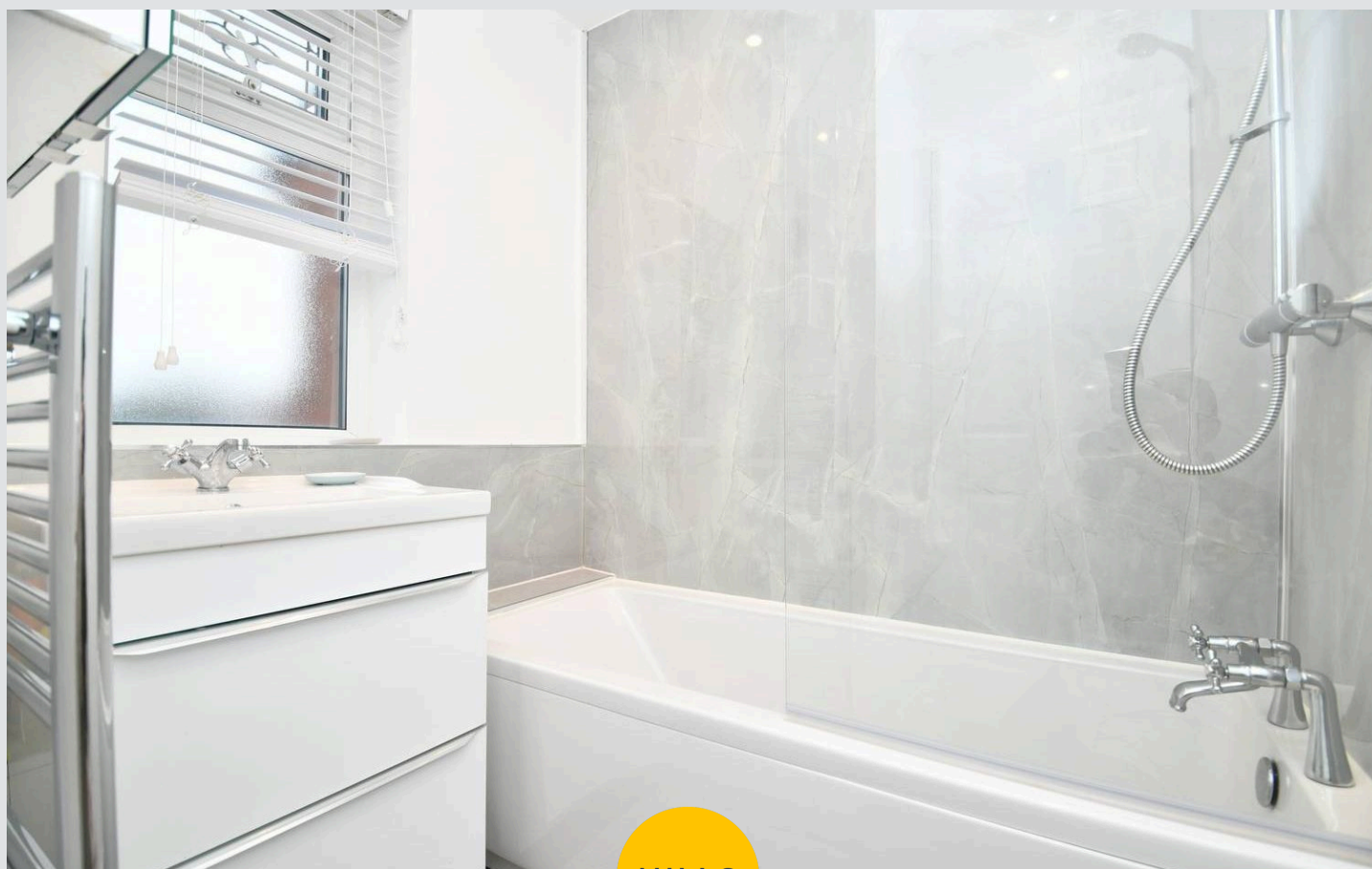
4' 11" x 6' 0" (1.50m x 1.83m)

Featuring a two piece suite including bath with shower over and hand wash basin. Complete with ceiling spotlights, double glazed window and luxury vinyl tile flooring.

### W.C.

4' 4" x 2' 6" (1.32m x 0.77m)

Featuring a two piece suite including a hand wash basin and W.C. Complete with ceiling spotlights, double glazed window and luxury vinyl tile flooring.

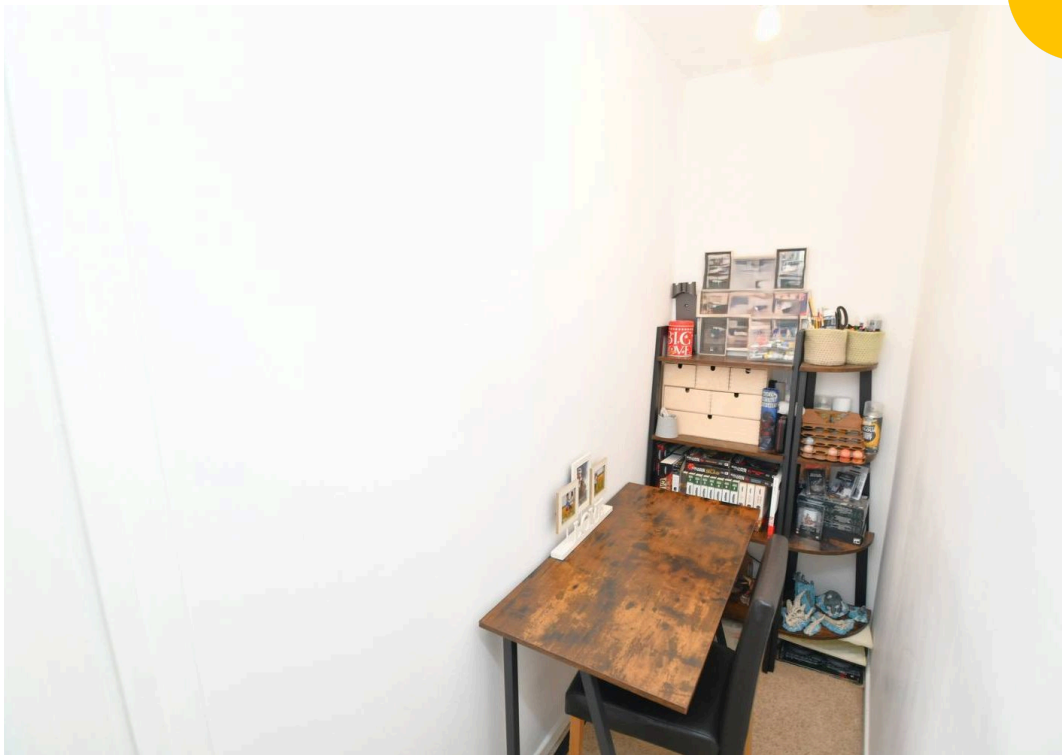


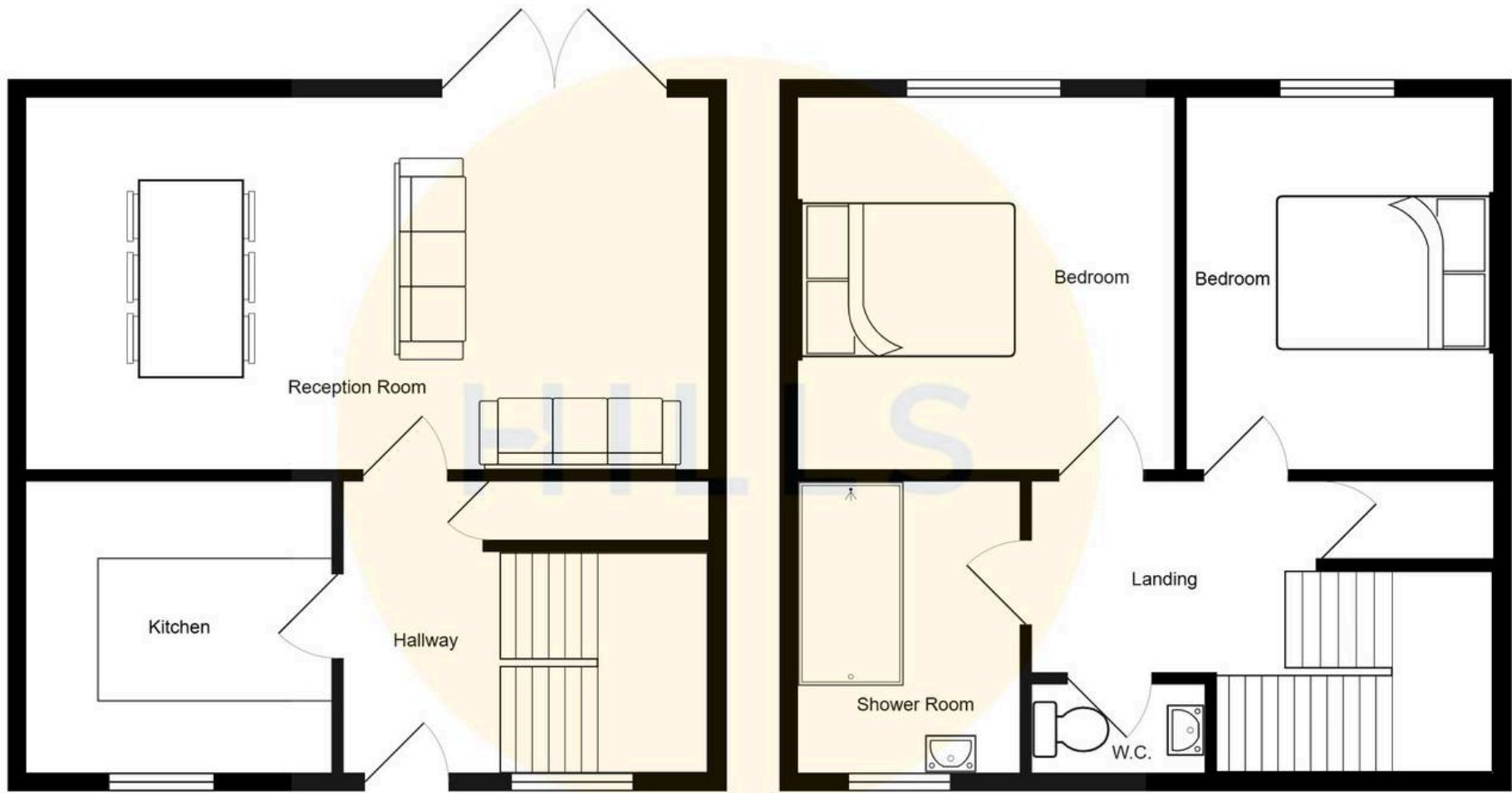
HILLS





HILLS







## Hills | Salfords Estate Agent

Hills Residential, Sentinel House Albert Street – M30 0SS

0161 707 4900

[sales@hills.agency](mailto:sales@hills.agency)

[www.hills.agency/](http://www.hills.agency/)



THE PROPERTY MISDESCRIPTIONS ACT 1991 The Agent has not tested any apparatus, equipment, fixtures and fittings or services and so cannot verify that they are in working order or fit for the purpose. A Buyer is advised to obtain verification from their Solicitor or Surveyor. References to the Tenure of a Property are based on information supplied by the Seller. The Agent has not had sight of the title documents. A Buyer is advised to obtain verification from their Solicitor. You are advised to check the availability of this property before travelling any distance to view. Every effort and precaution has been made to ensure these particulars are correct and not misleading but their accuracy is not guaranteed nor do they form part of any contract. If there is any point which is of particular importance to you, please contact us and we will provide any information you require. This is advisable, particularly if you intend to travel some distance to view the property. The mention of any appliances and services within these details does not imply that they are in full and efficient working order. These particulars are in draft form awaiting Vendors confirmation of their accuracy. These details must therefore be taken as a guide only.