



Peel Green Road, Eccles

Manchester



In Excess of £190,000

Peel Green Road

Eccles, Manchester

Fantastic mid-terraced house in sought-after Peel Green area. Spacious lounge, fitted kitchen, three bedrooms, and bathroom. Front and rear gardens, garage. Close to amenities and transport links. Ideal for first-time buyers.

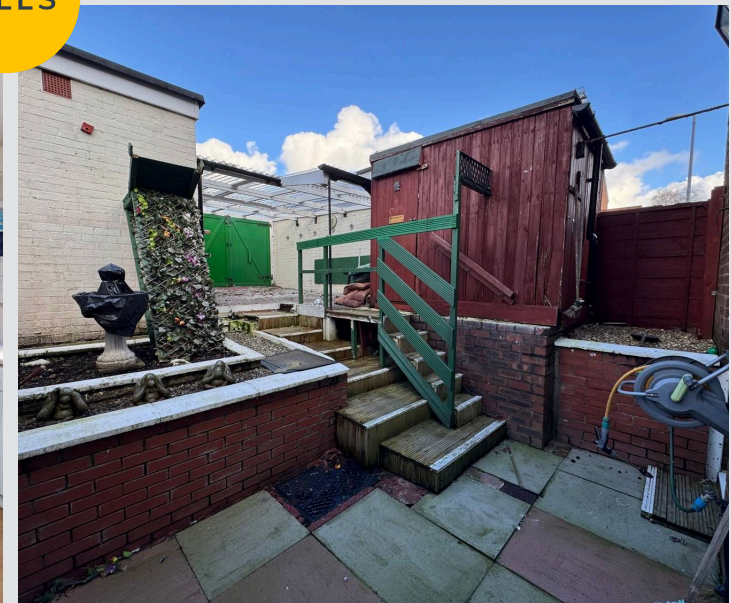
Council Tax band: A

Tenure: Freehold

- Located in the Desirable Peel Green Area
- Spacious Lounge
- Fitted Kitchen & Bathroom
- Three Generously Sized Bedrooms
- Well Kept Front & Low Maintenance Rear Garden
- Garage to the Rear of the Property
- Freehold Title
- Surrounded by Brilliant Amenities, Including The Trafford Centre
- Excellent Public Transport & Motorway Links Close by
- The Perfect First Time Buy



HILLS



Reception Room

15' 9" x 11' 9" (4.81m x 3.57m)

Complete with a ceiling light point, double glazed window and wall mounted radiator. Fitted with laminate flooring.

Kitchen

8' 11" x 13' 7" (2.73m x 4.15m)

Featuring complementary wall and base units with integral cooker and hob. Space for a washing machine, dishwasher, dryer and fridge freezer. Complete with a ceiling light point, double glazed window and laminate flooring.

Pantry

8' 5" x 2' 10" (2.56m x 0.86m)

Complete with a ceiling light point and carpet flooring.

Downstairs W.C.

2' 7" x 5' 9" (0.80m x 1.76m)

Featuring a two piece suite including hand wash basin and W.C. Complete with a ceiling light point, double glazed window and wall mounted radiator. Fitted with laminate flooring.

Landing

Complete with a ceiling light point and carpet flooring.

Bathroom

8' 9" x 5' 6" (2.67m x 1.67m)

Featuring a four piece suite including a bath, shower, hand wash basin and W.C. Complete with a ceiling light point, double glazed window and wall mounted radiator. Fitted with laminate flooring.

Bedroom One

13' 4" x 9' 0" (4.07m x 2.74m)

Featuring fitted wardrobes. Complete with a ceiling light point, double glazed window and wall mounted radiator. Fitted with laminate flooring.



Bedroom Two

16' 4" x 10' 1" (4.99m x 3.07m)

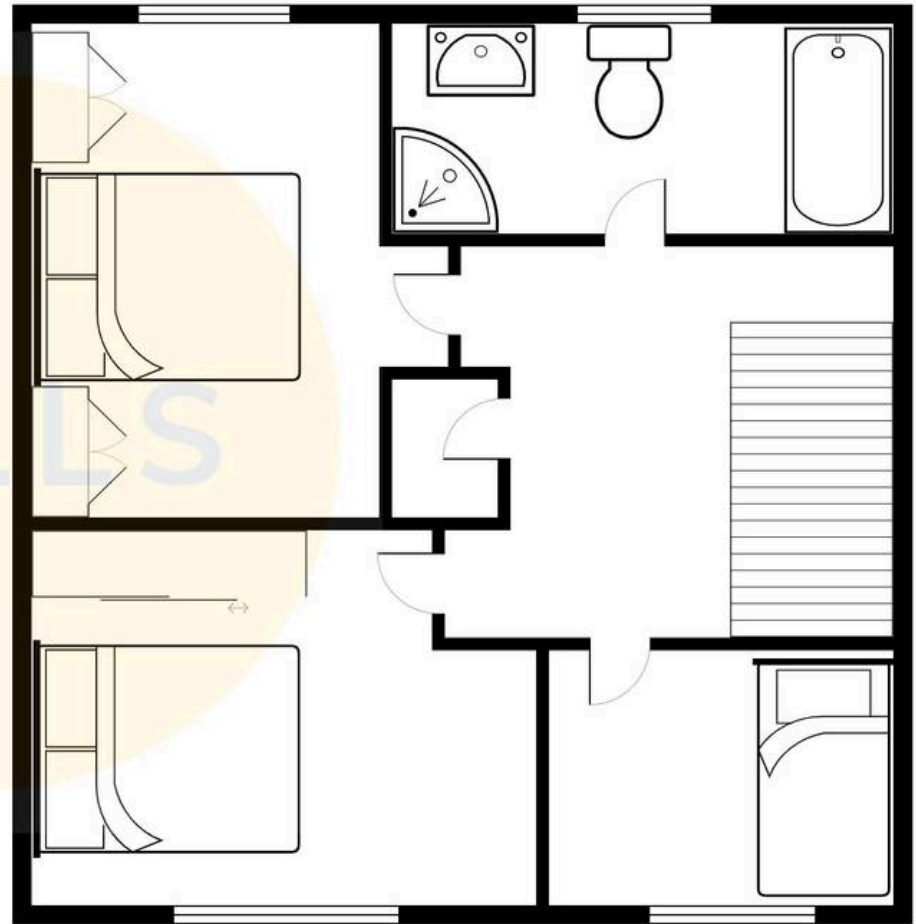
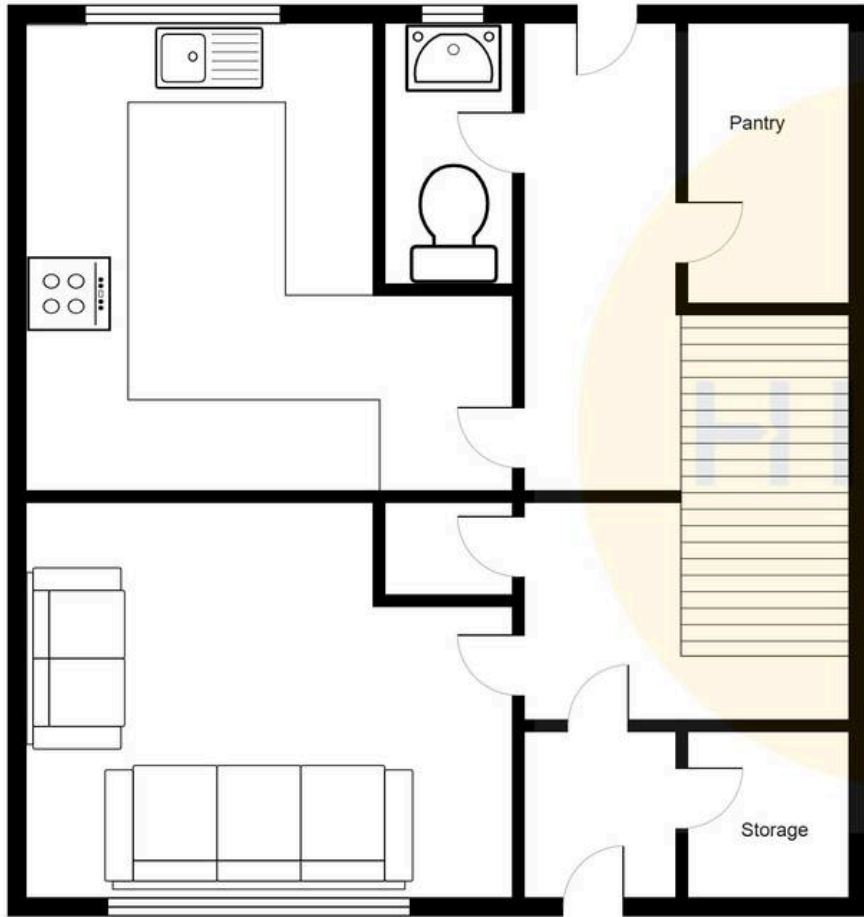
Featuring fitted wardrobes. Complete with a ceiling light point, double glazed window and laminate flooring.

Bedroom Three

7' 7" x 8' 11" (2.31m x 2.71m)

Complete with a ceiling light point, double glazed window and wall mounted radiator. Fitted with carpet flooring.







HILLS

Hills | Salfords Estate Agent

Hills Residential, Sentinel House Albert Street - M30 0SS

0161 707 4900

sales@hills.agency

www.hills.agency/



THE PROPERTY MISDESCRIPTIONS ACT 1991 The Agent has not tested any apparatus, equipment, fixtures and fittings or services and so cannot verify that they are in working order or fit for the purpose. A Buyer is advised to obtain verification from their Solicitor or Surveyor. References to the Tenure of a Property are based on information supplied by the Seller. The Agent has not had sight of the title documents. A Buyer is advised to obtain verification from their Solicitor. You are advised to check the availability of this property before travelling any distance to view. Every effort and precaution has been made to ensure these particulars are correct and not misleading but their accuracy is not guaranteed nor do they form part of any contract. If there is any point which is of particular importance to you, please contact us and we will provide any information you require. This is advisable, particularly if you intend to travel some distance to view the property. The mention of any appliances and services within these details does not imply that they are in full and efficient working order. These particulars are in draft form awaiting Vendors confirmation of their accuracy. These details must therefore be taken as a guide only.