



Ladywell Point, Pilgrims Way

Salford



Prices From **£150,000**

Ladywell Point

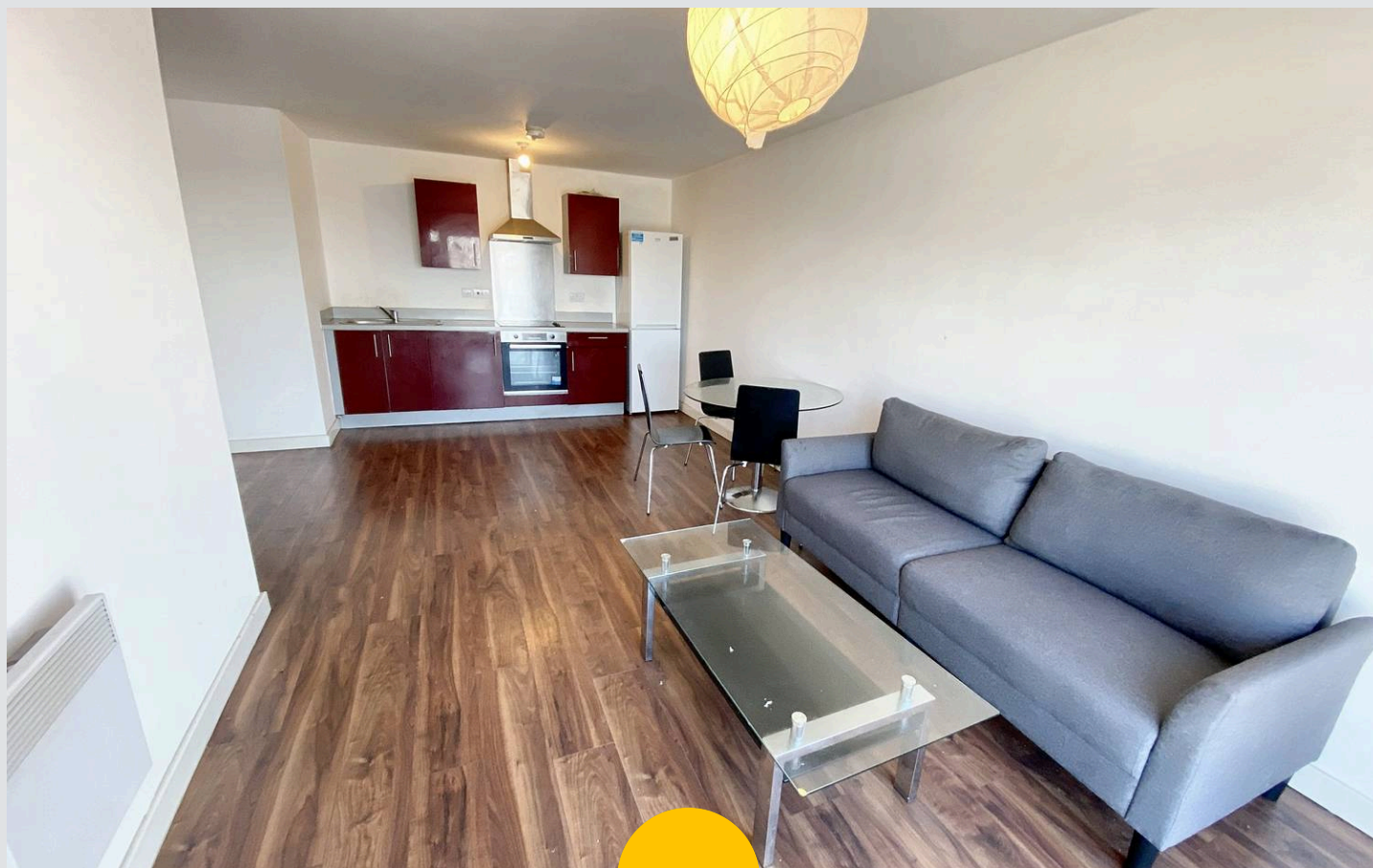
Salford

Spacious TWO DOUBLE BEDROOM apartment on the 4th floor with 18ft open plan kitchen diner, 2 double bedrooms, en-suite, no chain. Ideal location near Eccles, Salford Royal Hospital, Ladywell tram stop. Perfect for first home or investment. Contact office for details/viewing!

Council Tax band: B

Tenure: Leasehold

- Spacious Two Bedroom Apartment Available With No Chain
- Two Double Bedrooms
- En-suite To The Master Bedroom
- Allocated Parking
- Fully Double Glazed and Electric Wall Mounted Heaters
- Perfect First Home Or Potential Investment
- Properties Of A Similar Size Rent For £1050 Per Month
- Ideally Located A Stones Throw From the Metro-link Into Manchester & Salford Quays
- Walking Distance To Eccles & Salford Royal Hospital
- Open Plan 21ft Kitchen Diner



HILLS



Entrance Hallway

11' 5" x 3' 10" (3.49m x 1.18m)

Storage Cupboard

Housing boiler

Open Plan Lounge and Kitchen

21' 5" x 13' 11" (6.53m x 4.24m)

Open plan kitchen diner and lounge

Bedroom One

13' 3" x 7' 4" (4.05m x 2.23m)

En-suite

7' 9" x 4' 3" (2.36m x 1.30m)

Bedroom Two

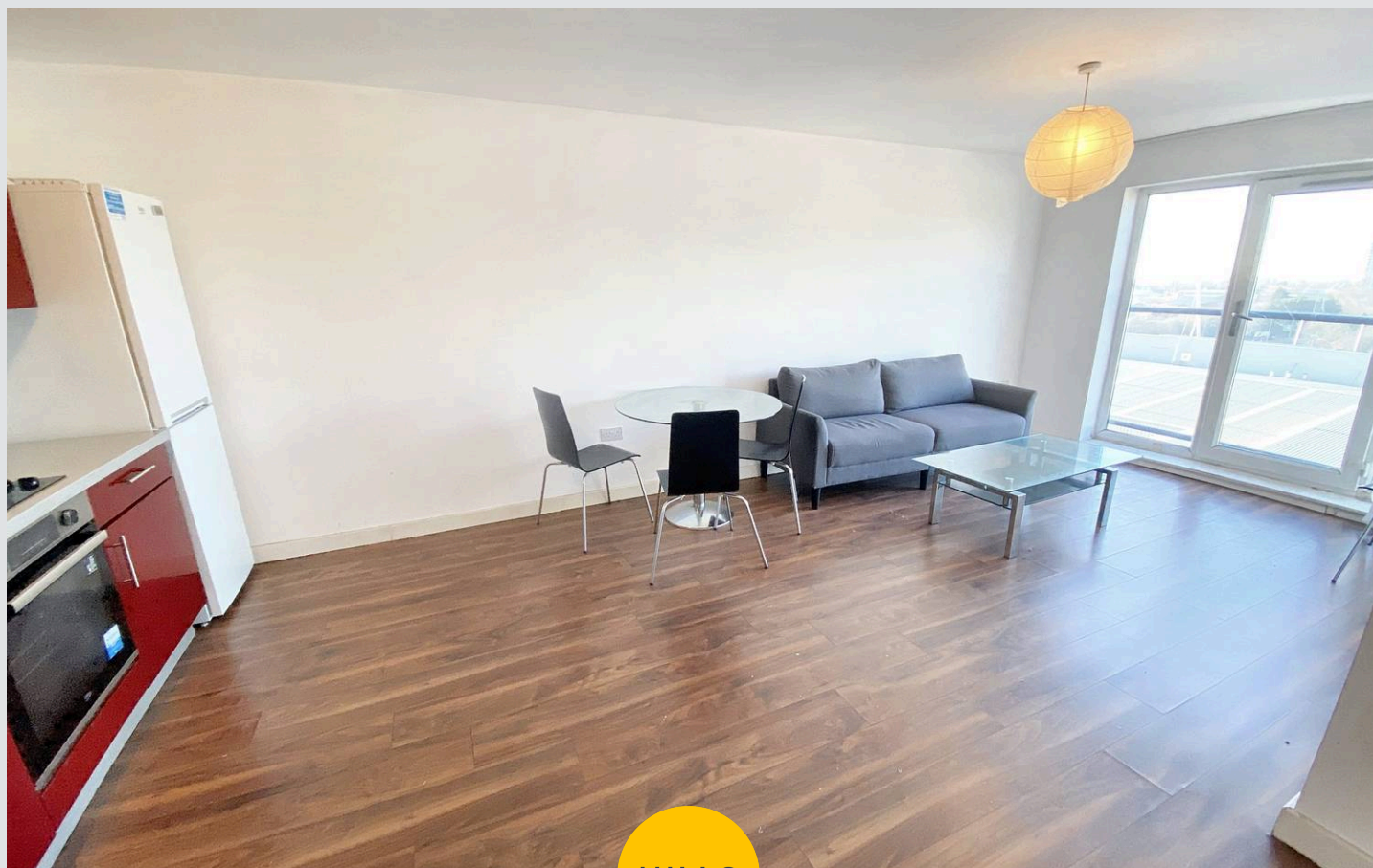
10' 6" x 9' 7" (3.21m x 2.92m)

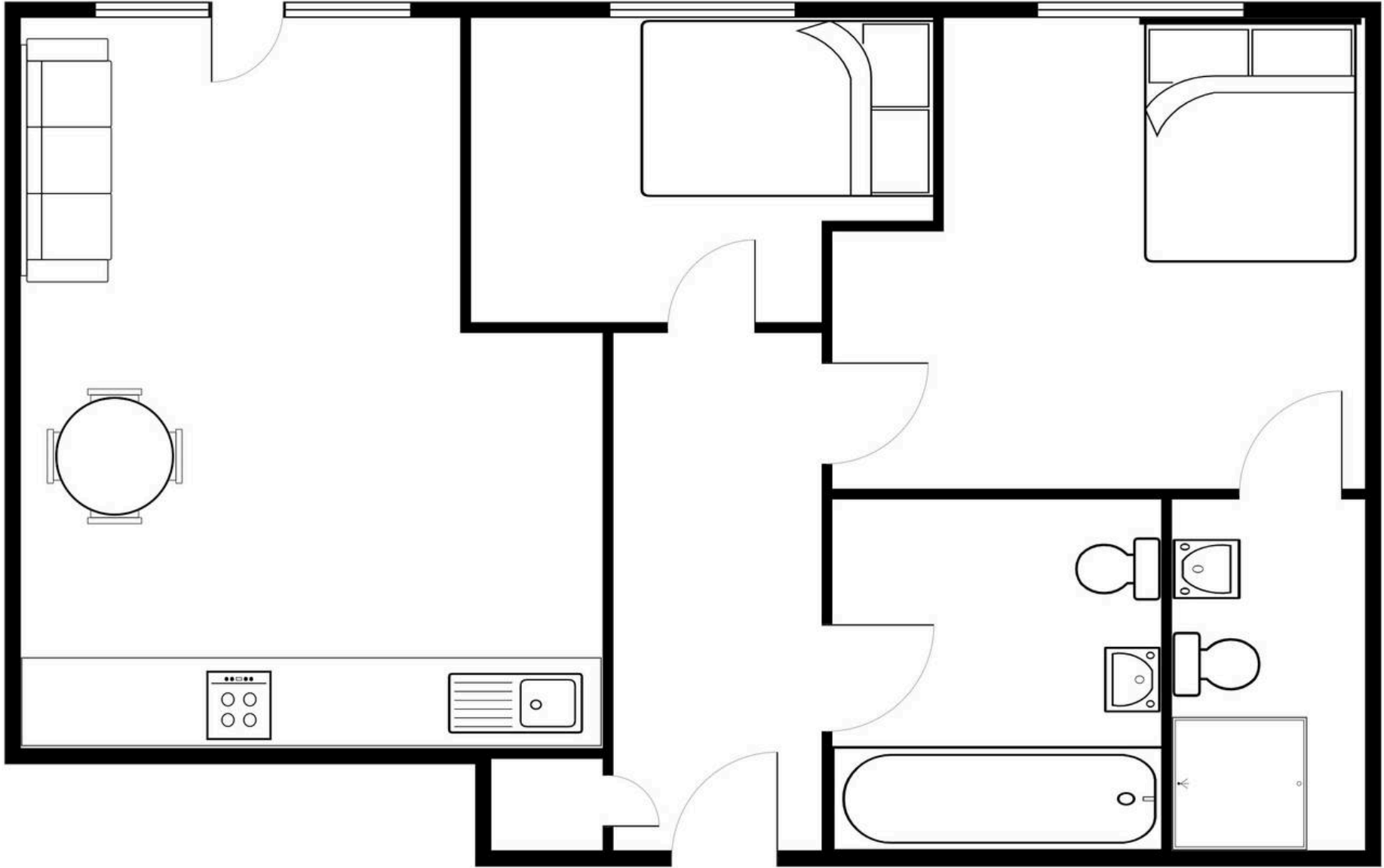
Bathroom

7' 10" x 6' 4" (2.39m x 1.93m)

Externally

Private allocated parking behind electric gate







Hills | Salfords Estate Agent

Hills Residential, Sentinel House Albert Street - M30 0SS

0161 707 4900

sales@hills.agency

www.hills.agency/



THE PROPERTY MISDESCRIPTIONS ACT 1991 The Agent has not tested any apparatus, equipment, fixtures and fittings or services and so cannot verify that they are in working order or fit for the purpose. A Buyer is advised to obtain verification from their Solicitor or Surveyor. References to the Tenure of a Property are based on information supplied by the Seller. The Agent has not had sight of the title documents. A Buyer is advised to obtain verification from their Solicitor. You are advised to check the availability of this property before travelling any distance to view. Every effort and precaution has been made to ensure these particulars are correct and not misleading but their accuracy is not guaranteed nor do they form part of any contract. If there is any point which is of particular importance to you, please contact us and we will provide any information you require. This is advisable, particularly if you intend to travel some distance to view the property. The mention of any appliances and services within these details does not imply that they are in full and efficient working order. These particulars are in draft form awaiting Vendors confirmation of their accuracy. These details must therefore be taken as a guide only.