



Shakespeare Crescent, Eccles

Manchester



Offers Over £190,000

Shakespeare Crescent

Eccles, Manchester

Perfect for first-time buyers, this two bed terraced house boasts open plan living space, modern kitchen, two double bedrooms, contemporary bathroom, and low maintenance gardens. Superbly located near amenities and excellent transport links. Council Tax band: A

Tenure: Freehold

- Fantastic First Time Buy
- Spacious Bay fronted Lounge & Second Reception Room
- Modern Fitted Kitchen with High Gloss Finish
- Two Double Bedrooms
- Contemporary Three Piece Bathroom Suite
- Low Maintenance Gardens to the Front & Rear
- Excellently Located Close to Local Amenities
- Brilliant Public Transport & Motorway Links



HILLS



Lounge

Dimensions: 14' 4" x 10' 9" (4.37m x 3.27m). Featuring an electric fire. Complete with a ceiling light point, double glazed window and wall mounted radiator. Fitted with wood effect flooring.

Dining Room

Dimensions: 11' 6" x 13' 2" (3.50m x 4.01m). Complete with a ceiling light point, double glazed window and wood effect flooring.

Kitchen

Dimensions: 8' 2" x 7' 3" (2.49m x 2.21m). Featuring complementary wall and base units with integral stainless steel sink, extractor fan, gas hob and oven. Space for a washing machine and fridge freezer. Complete with a ceiling light point, double glazed window and uPVC door. Fitted with tiled splashbacks and tile effect flooring.

Landing

Complete with a ceiling light point and carpe flooring. Access to a boarded loft.

Bedroom One

Dimensions: 14' 3" x 12' 2" (4.34m x 3.71m). Complete with a ceiling light point, two double glazed windows and two wall mounted radiators.

Bedroom Two

Dimensions: 13' 2" x 9' 6" (4.01m x 2.89m). Complete with a ceiling light point, double glazed window and wall mounted radiator.

Bathroom

Dimensions: 7' 3" x 7' 8" (2.21m x 2.34m). Featuring a three piece suite including a bath with shower over, hand wash basin and W.C. Complete with a ceiling light point, double glazed window and wall mounted radiator. Fitted with partially tiled walls and tiled effect flooring.



Cellar

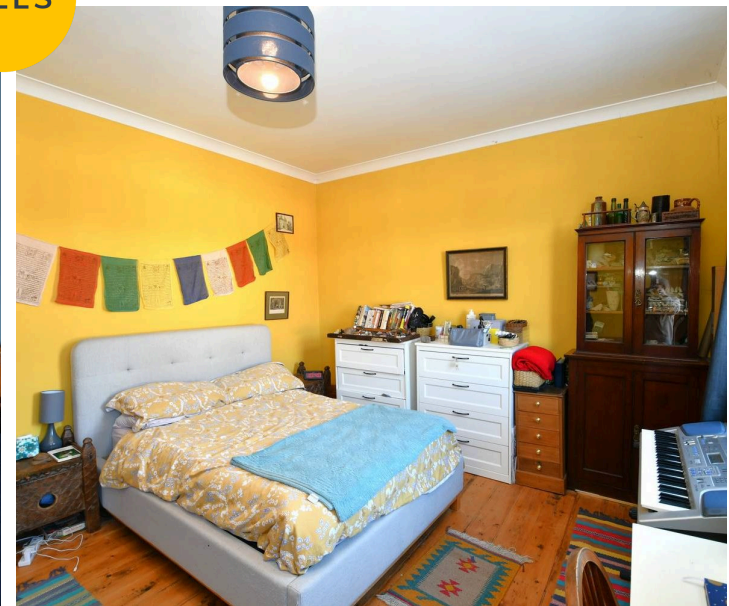
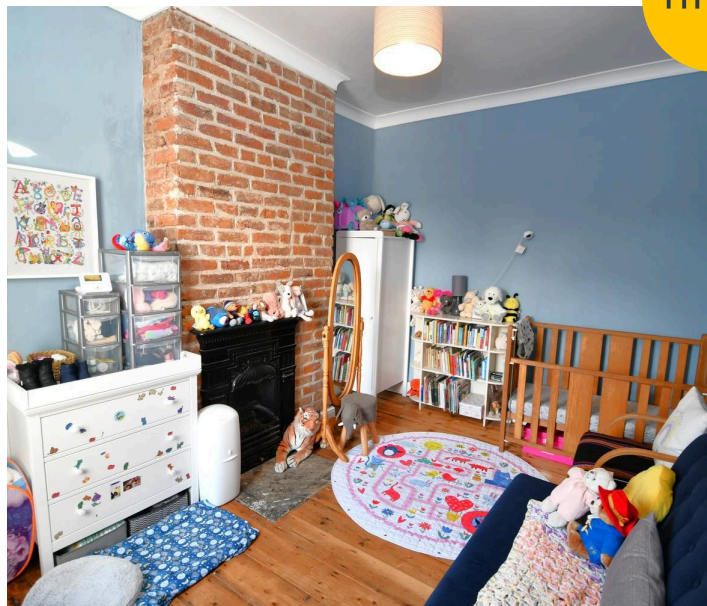
Dimensions: 14' 5" x 12' 3" (4.39m x 3.73m). Ceiling light point and meters.

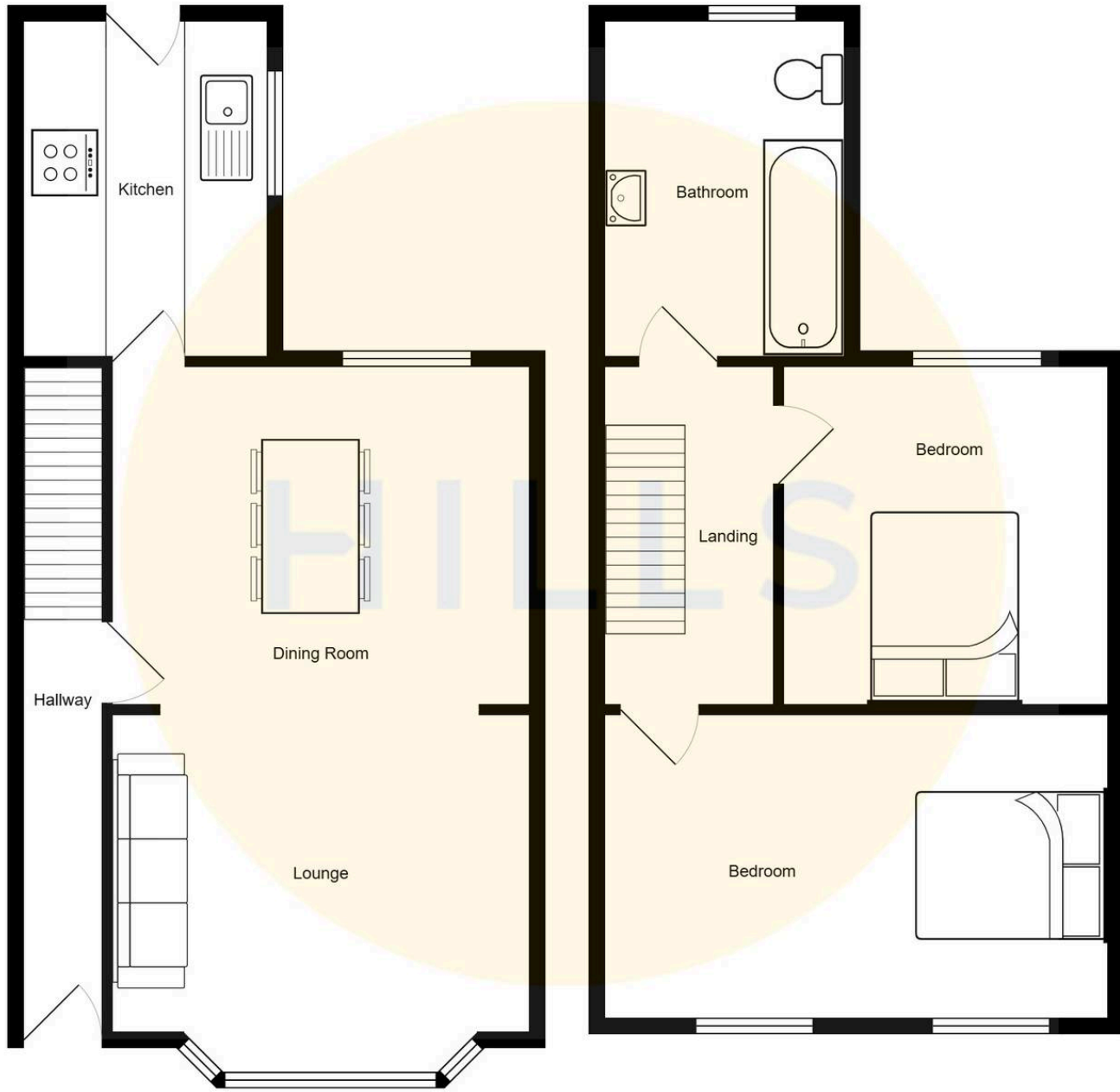
Externally

To the front is a paved garden, whilst to the rear is an enclosed yard.



HILLS







Hills | Salfords Estate Agent

Hills Residential, Sentinel House Albert Street – M30 0SS

0161 707 4900

sales@hills.agency

www.hills.agency/



THE PROPERTY MISDESCRIPTIONS ACT 1991 The Agent has not tested any apparatus, equipment, fixtures and fittings or services and so cannot verify that they are in working order or fit for the purpose. A Buyer is advised to obtain verification from their Solicitor or Surveyor. References to the Tenure of a Property are based on information supplied by the Seller. The Agent has not had sight of the title documents. A Buyer is advised to obtain verification from their Solicitor. You are advised to check the availability of this property before travelling any distance to view. Every effort and precaution has been made to ensure these particulars are correct and not misleading but their accuracy is not guaranteed nor do they form part of any contract. If there is any point which is of particular importance to you, please contact us and we will provide any information you require. This is advisable, particularly if you intend to travel some distance to view the property. The mention of any appliances and services within these details does not imply that they are in full and efficient working order. These particulars are in draft form awaiting Vendors confirmation of their accuracy. These details must therefore be taken as a guide only.