

9 Winster Road, Eccles

Manchester



In Excess of £260,000

9 Winster Road

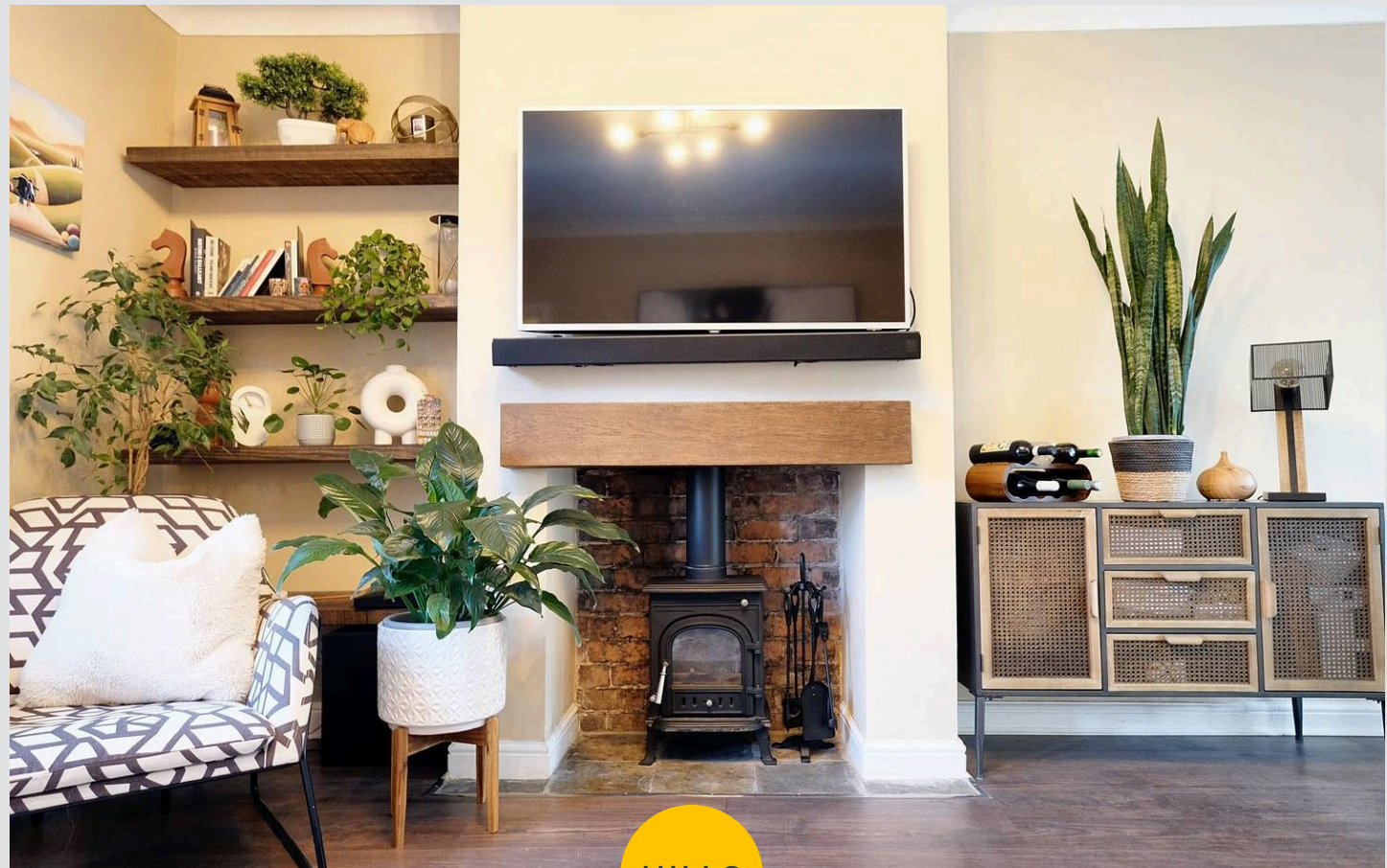
Eccles, Manchester

Beautiful freehold home in sought-after Peel Green area. Open plan living space, modern design, three bedrooms, landscaped garden, parking. Close to amenities, schools, transport links.

Council Tax band: A

Tenure: Freehold

- The Perfect First Time Buy or Family Home, Located in the Popular Peel Green Area
- Open Plan Kitchen, Living and Dining to the Ground Floor
- Beautifully Presented Throughout
- Three Well Proportioned Bedrooms, Master with Fitted Wardrobes
- Modern Three Piece Bathroom Suite
- Block Paved Driveway accommodating Off Road Parking for Multiple Cars
- Beautifully Landscaped Rear Garden, with a Tiered Lawn and Decked Seating Areas
- Surrounded by a Plethora of Amenities, Close to Shops, Parks, Local Schools and The Trafford Centre just a Short Walk Away
- Brilliant Public Transport & Motorway Links Close By



HILLS



Hallway

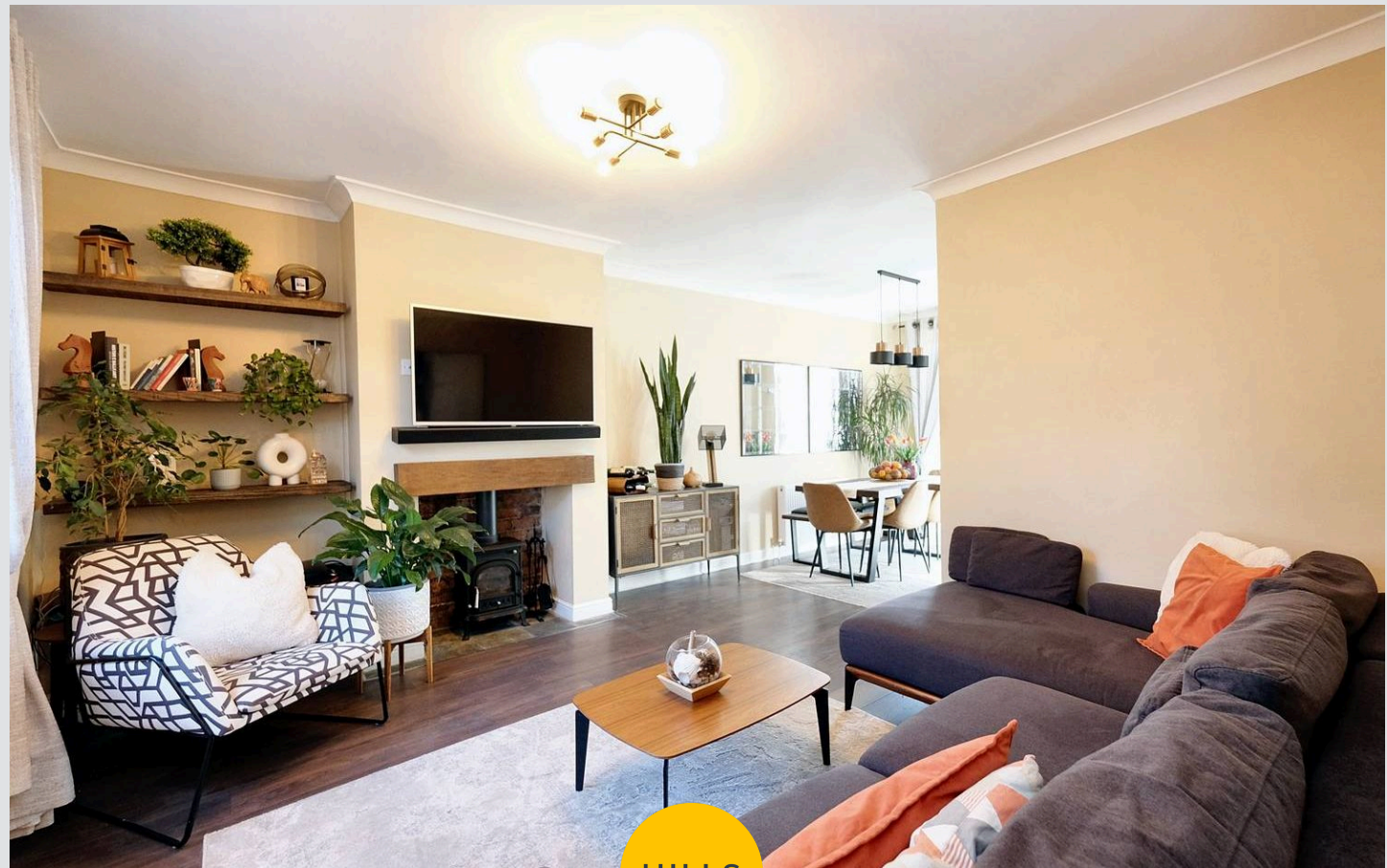
Dimensions: 5' 9" x 14' 7" (1.75m x 4.44m). Composite door to the front, ceiling light point, double glazed window, wall mounted radiator and wood effect floors.

Lounge

Dimensions: 13' 3" x 12' 1" (4.04m x 3.68m). Double glazed window, ceiling light point, wall mounted radiator and wood effect floors.

Kitchen/Diner

Dimensions: 19' 7" x 9' 9" (5.96m x 2.97m). A range of wall and base units with complementary work top surfaces with an integrated porcelain sink and drainer unit and integrated oven and hob. Space for a double fridge freezer. Double glazed window and patio doors to the rear. Inset spotlights, partially tiled walls and laminate floors.



Bedroom One

Dimensions: 12' 1" x 10' 7" (3.68m x 3.22m). Double glazed window, ceiling light point, fitted wardrobes, wall mounted radiator and carpeted floors.

Bedroom Two

Dimensions: 11' 2" x 10' 0" (3.40m x 3.05m). Double glazed window, ceiling light point, wall mounted radiator and carpeted floors.

Bedroom Three

Dimensions: 9' 1" x 7' 0" (2.77m x 2.13m). Double glazed window, ceiling light point, wall mounted radiator, storage cupboard and carpeted floors.

Bathroom

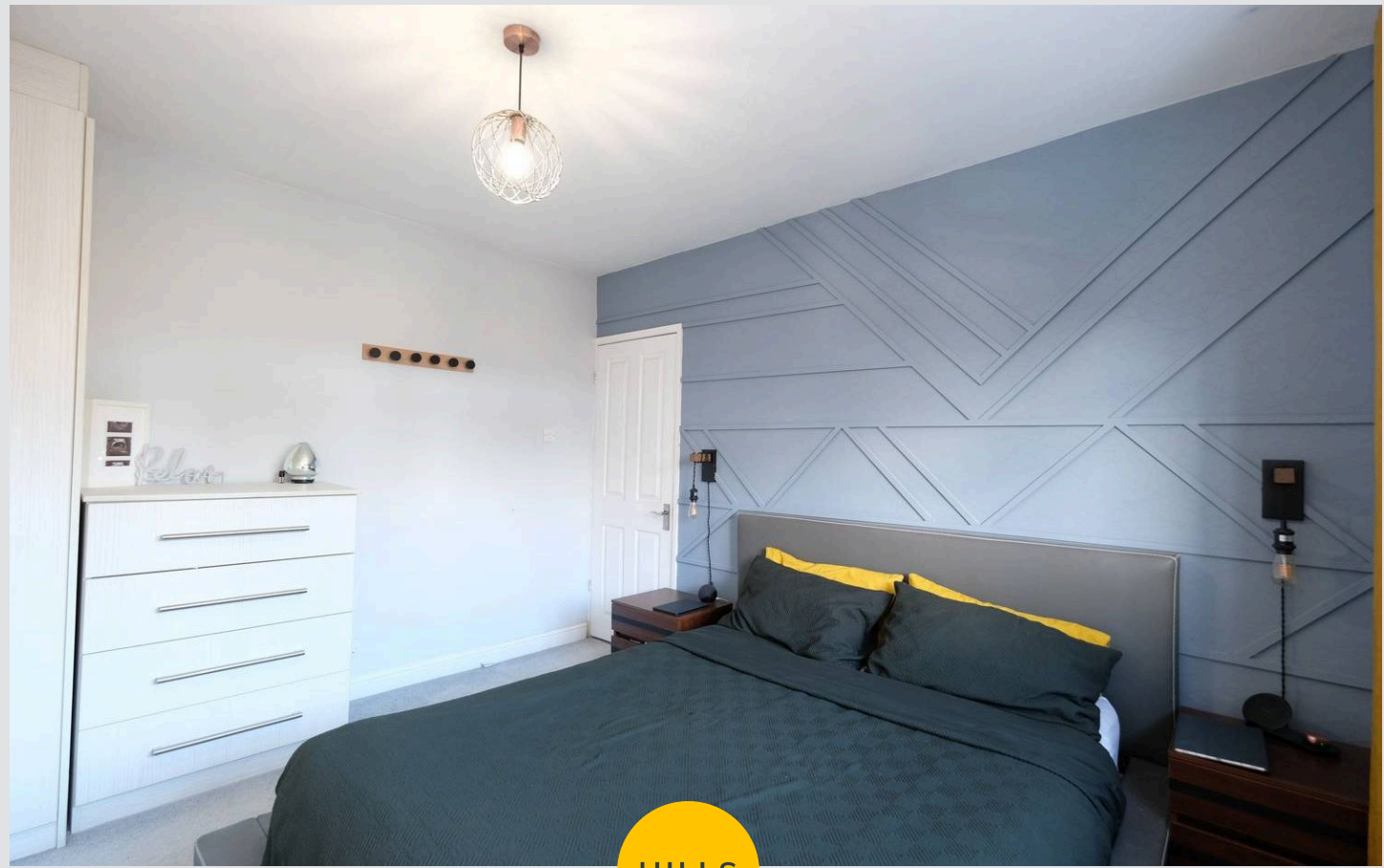
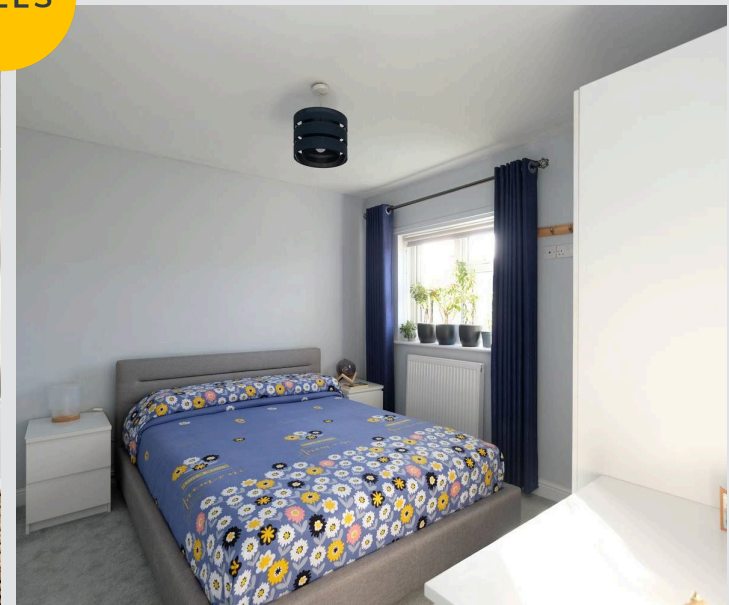
Dimensions: 8' 1" x 5' 5" (2.46m x 1.65m). Three piece suite comprising of a low level WC, hand wash basin and bath with shower over. Two double glazed windows, heated towel radiator, inset spotlights and vinyl floors.

Landing

Double glazed window, ceiling light point, loft access, skylight window and carpeted floors.

Externally

Blocked paved driveway to the front for multiple cars and to the rear is laid to lawn garden with a decked area and a brick built shed complete with electricity.

**HILLS**



HILLS



HILLS



Hills | Salfords Estate Agent

Hills Residential, Sentinel House Albert Street -
M30 0SS

0161 707 4900

sales@hills.agency

www.hills.agency/



HILLS