



Squires Court, Canterbury Gardens

Salford



£115,000

Squires Court

Salford

Spacious Two Bedroom Apartment Located on the Ground Floor of the Popular Canterbury Gardens! Just a Stone's Throw from Ladywell Tram Stop and Close to West One Retail Park and Eccles Town Centre!

Council Tax band: A

Tenure: Leasehold

- Spacious, Two Bedroom Ground Floor Apartment
- Just a Stone's Throw from Ladywell Tram Stop, which Provides Direct Access into Salford Quays, Media City and Manchester City Centre
- Generously-Sized Lounge Diner with Patio Doors to a Terraced Seating Area
- Two Double Bedrooms
- Fitted Kitchen and a Three-Piece Bathroom
- Beautifully Maintained Communal Gardens
- Communal Parking
- Just a Short Walk from Salford Royal Hospital, West One Retail Park and Eccles Town Centre
- Viewing is Highly Recommended!



Entrance Hallway

Complete with a ceiling light point, wall mounted radiator and carpet flooring.

Lounge/Diner

14' 0" x 11' 11" (4.26m x 3.63m)

Complete with a ceiling light point, patio doors and a radiator. Fitted with carpet flooring.

Kitchen

9' 6" x 8' 0" (2.90m x 2.44m)

Featuring complementary fitted units with integral hob and oven. Space for a fridge freezer, washing machine and dryer. Complete with a ceiling light point, double glazed window and cushioned flooring.

Bathroom

6' 10" x 6' 9" (2.09m x 2.06m)

Featuring a three piece suite including a bath with shower over, hand wash basin and W.C. Complete with a ceiling light point, double glazed window and radiator. Fitted with tiled flooring.

Bedroom One

11' 6" x 10' 11" (3.51m x 3.33m)

Complete with a ceiling light point, double glazed window and wall mounted radiator. Fitted with carpet flooring.

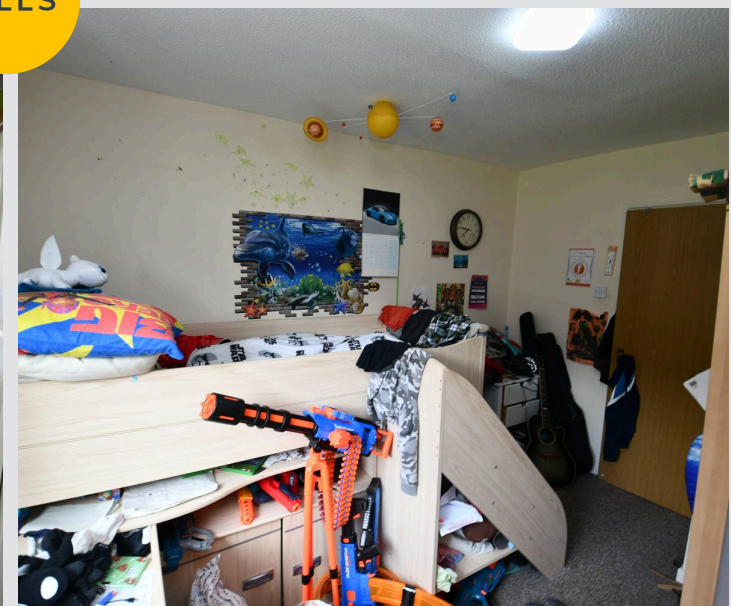
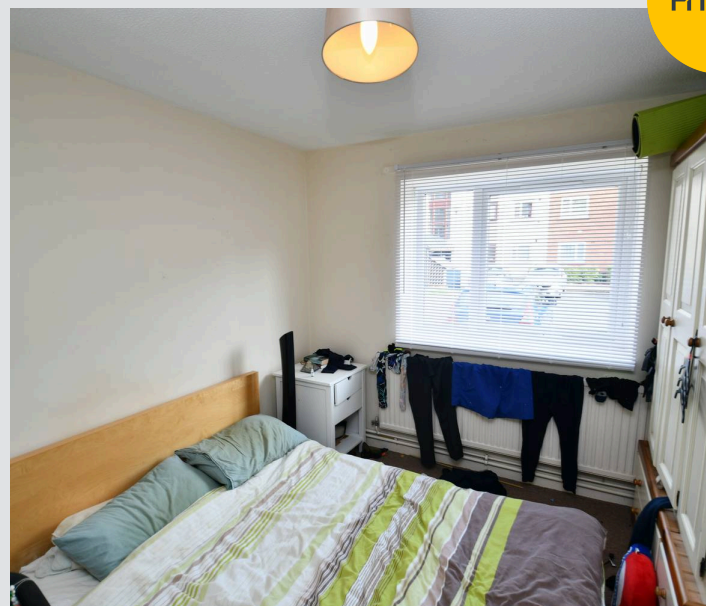
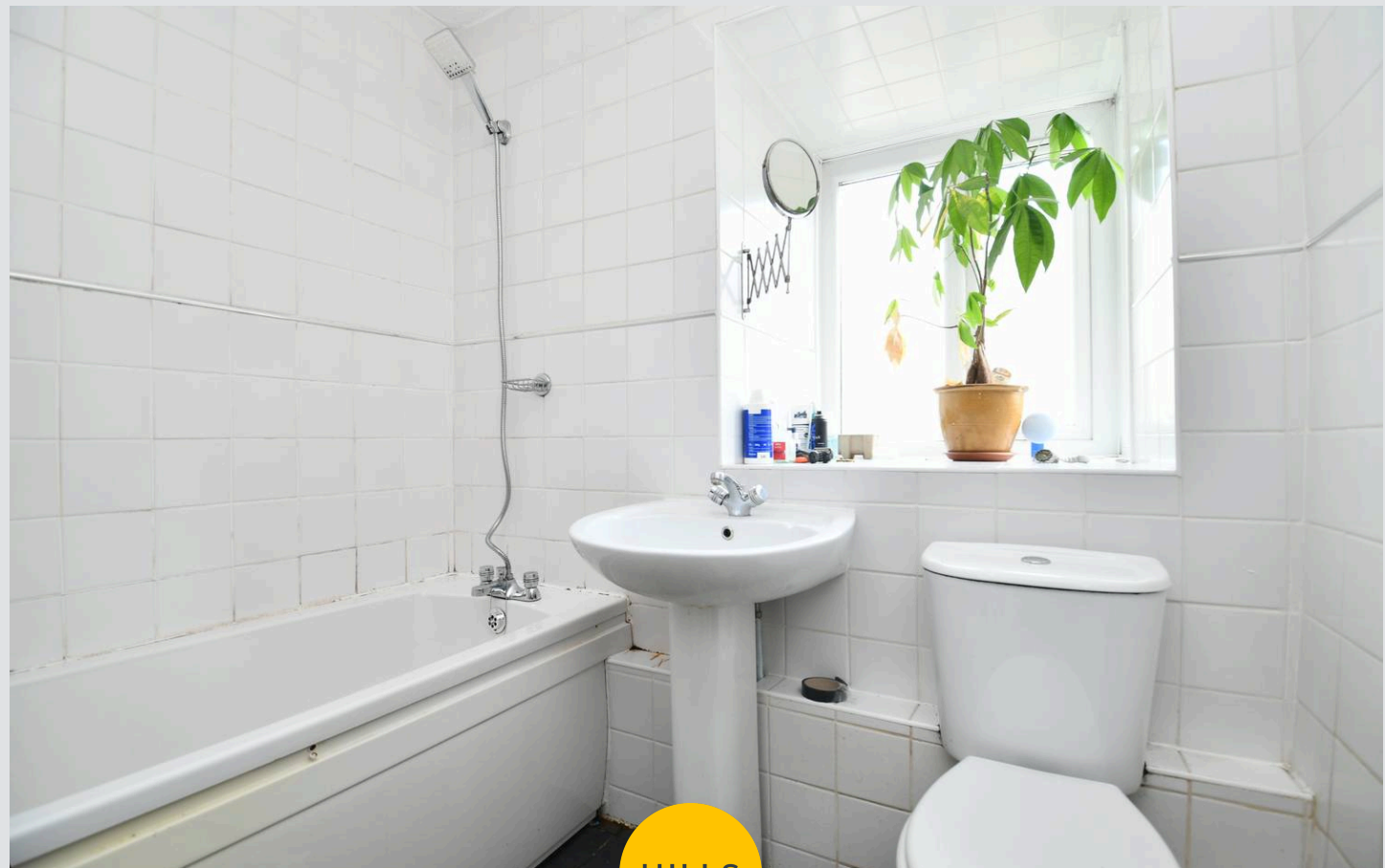
Bedroom Two

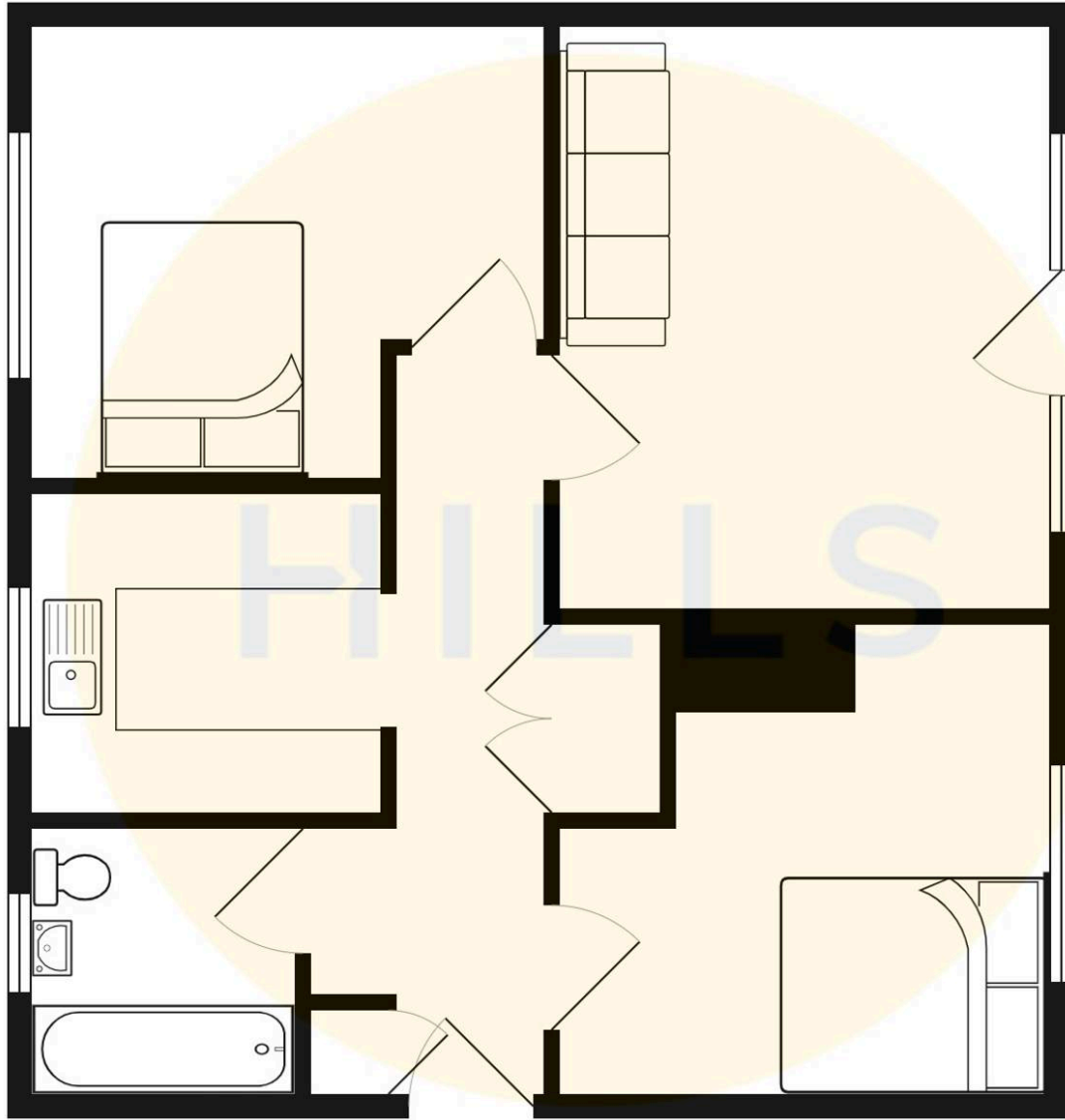
13' 0" x 9' 7" (3.97m x 2.93m)

Complete with a ceiling light point, double glazed window and radiator. Fitted with carpet flooring.

External

Featuring well presented communal gardens with communal parking.







Hills | Salfords Estate Agent

Hills Residential, Sentinel House Albert Street – M30 0SS

0161 707 4900

sales@hills.agency

www.hills.agency/



THE PROPERTY MISDESCRIPTIONS ACT 1991 The Agent has not tested any apparatus, equipment, fixtures and fittings or services and so cannot verify that they are in working order or fit for the purpose. A Buyer is advised to obtain verification from their Solicitor or Surveyor. References to the Tenure of a Property are based on information supplied by the Seller. The Agent has not had sight of the title documents. A Buyer is advised to obtain verification from their Solicitor. You are advised to check the availability of this property before travelling any distance to view. Every effort and precaution has been made to ensure these particulars are correct and not misleading but their accuracy is not guaranteed nor do they form part of any contract. If there is any point which is of particular importance to you, please contact us and we will provide any information you require. This is advisable, particularly if you intend to travel some distance to view the property. The mention of any appliances and services within these details does not imply that they are in full and efficient working order. These particulars are in draft form awaiting Vendors confirmation of their accuracy. These details must therefore be taken as a guide only.