



Castleway

Salford



Guide Price £200,000

# Castleway

Salford

**\*\*Offered for Sale by Hills Property Auctions\*\*** Take a look at this spacious three bedroom, semi-detached property, featuring a large lounge diner and an extended kitchen!

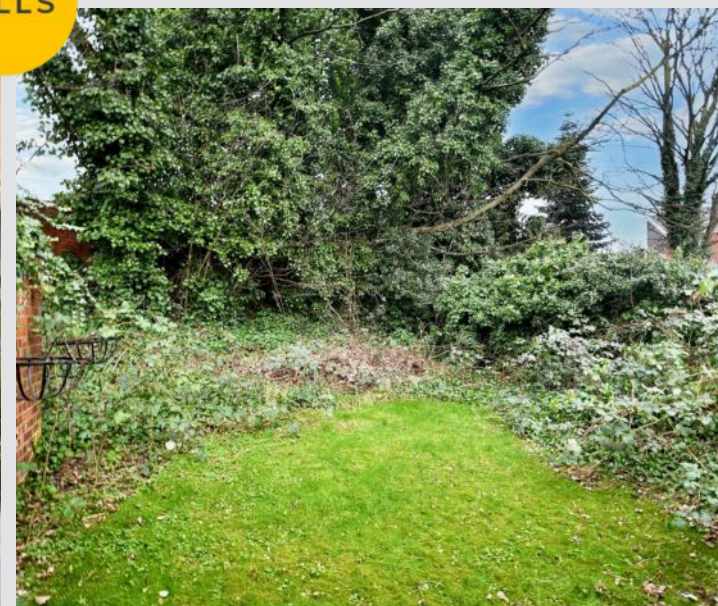
Council Tax band: B

Tenure: Freehold

- Offered for Sale by Hills Property Auctions
- Three Bedroom Semi-Detached Property
- Large Lounge Diner
- Extended Fitted Kitchen
- Three Well-Proportioned Bedrooms
- Bathroom and a Separate W/C
- Driveway and a Detached Garage to the Side for Off-Road Parking
- Gardens to the Front and Rear
- Close to Excellent Transport Links into Salford Quays, Media City and Manchester City Centre
- Viewing is Highly Recommended!



HILLS



### Entrance Hallway

Complete with a ceiling light point and carpet flooring.

### Lounge

13' 4" x 10' 11" (4.07m x 3.32m)

Complete with a ceiling light point, single glazed window and wall mounted radiator. Fitted with carpet flooring.

### Dining Room

11' 11" x 10' 11" (3.62m x 3.34m)

Complete with a ceiling light point, patio doors and wall mounted radiator. Fitted with carpet flooring.

### Kitchen

15' 7" x 6' 7" (4.75m x 2.00m)

Featuring complementary fitted units with integral hob and oven. Complete with two ceiling light points, three single glazed windows and cushioned flooring.

### Landing

Complete with a ceiling light point and single glazed window.

### Bedroom One

13' 1" x 10' 11" (3.98m x 3.33m)

Complete with a ceiling light point, single glazed window and wall mounted radiator.

### Bedroom Two

11' 11" x 10' 11" (3.63m x 3.32m)

Complete with a ceiling light point, single glazed window and wall mounted radiator. Fitted with carpet flooring.

### Bedroom Three

7' 0" x 6' 10" (2.13m x 2.09m)

Complete with a ceiling light point, single glazed window and wall mounted radiator. Fitted with carpet flooring.



**Bathroom**

6' 9" x 5' 11" (2.07m x 1.80m)

Featuring a two piece suite including a bath with shower over and hand wash basin. Complete with ceiling spotlights, single glazed window, tiled walls and cushioned flooring.

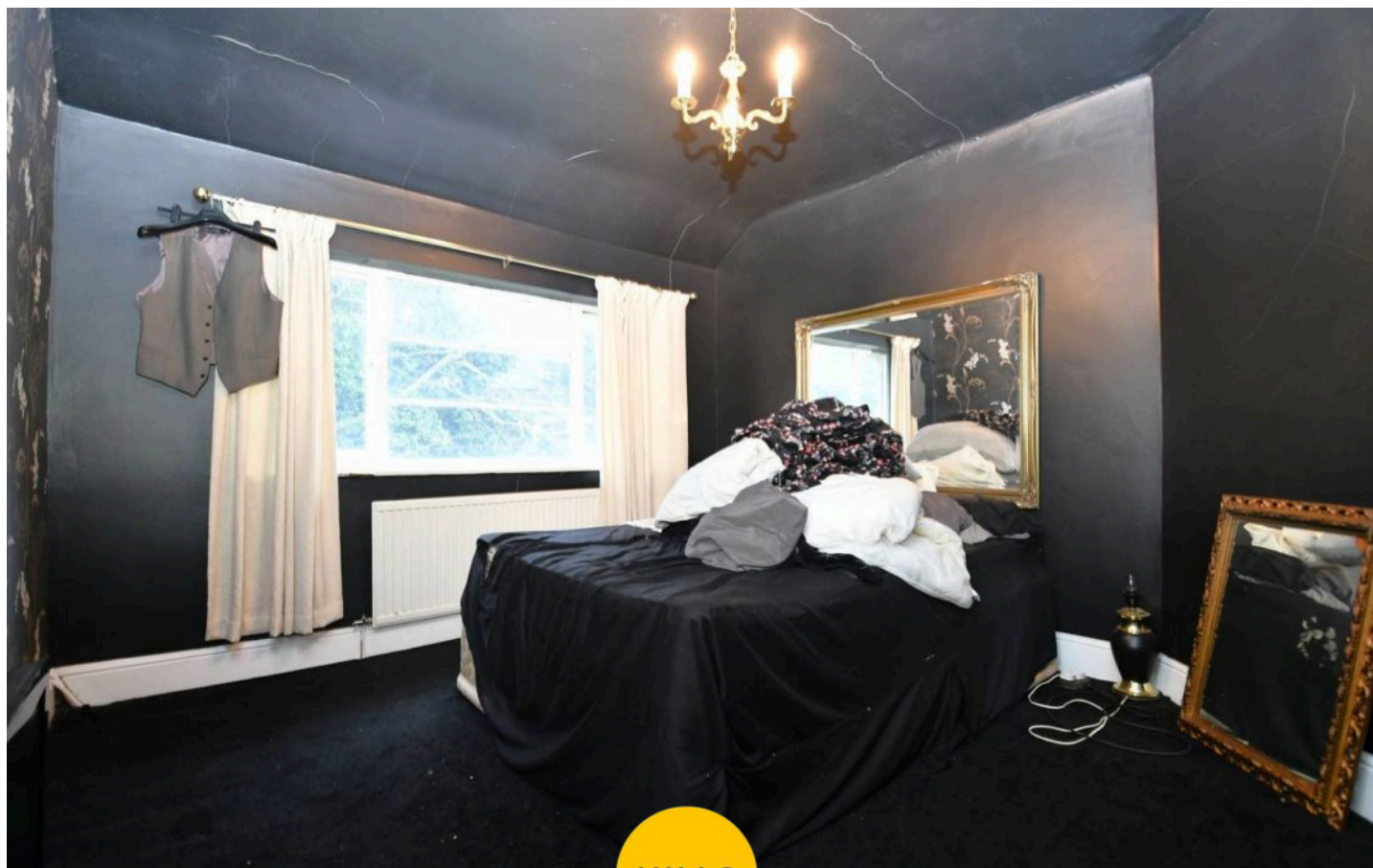
**W.C.**

4' 4" x 2' 5" (1.33m x 0.73m)

Featuring a W.C. Complete with ceiling light points, single glazed window, tiled walls and cushioned flooring.

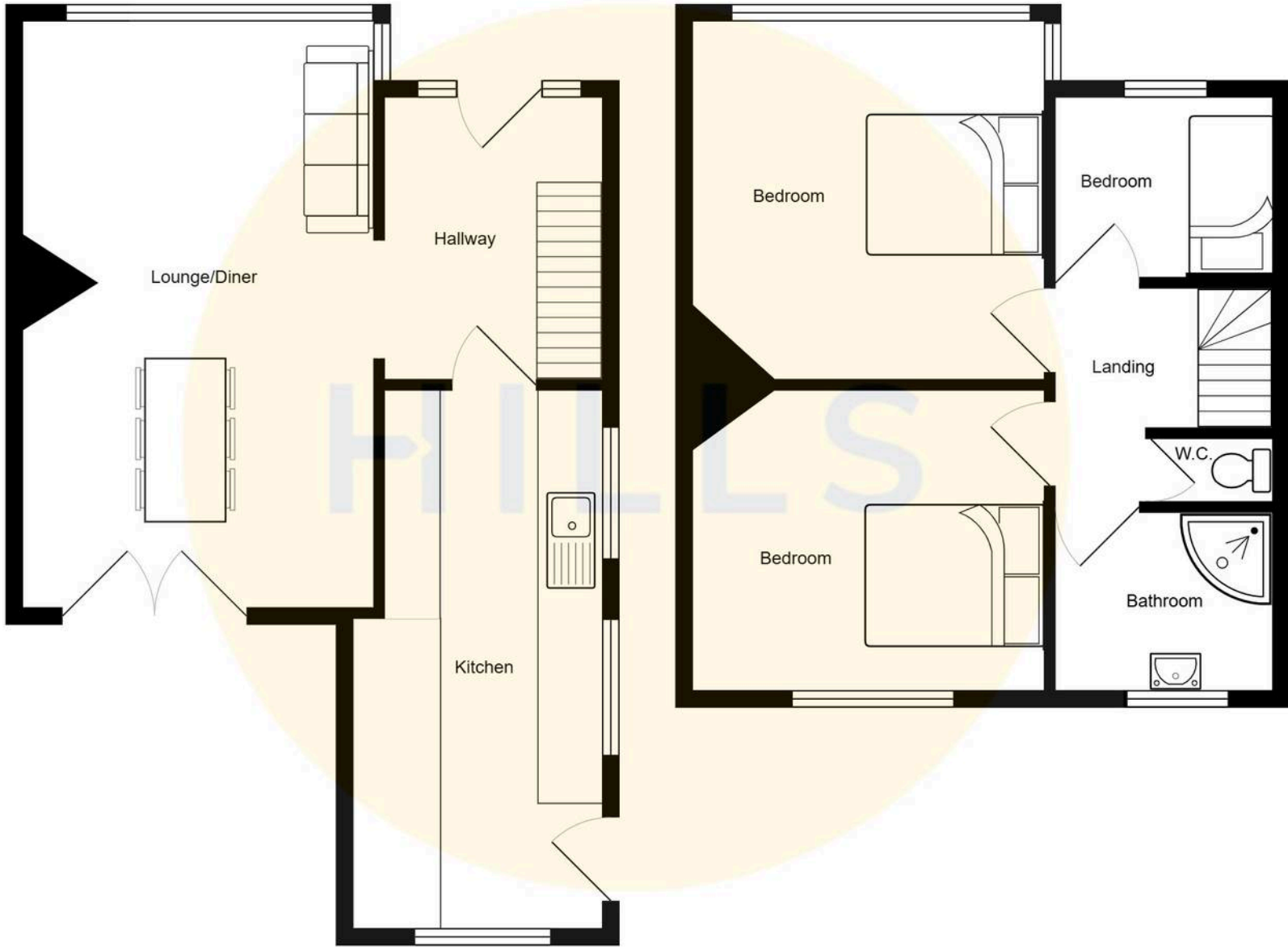
**External**

To the rear of the property is a garden with paving and lawn.



HILLS







## Hills | Salfords Estate Agent

Hills Residential, Sentinel House Albert Street – M30 0SS

0161 707 4900

[sales@hills.agency](mailto:sales@hills.agency)

[www.hills.agency/](http://www.hills.agency/)



THE PROPERTY MISDESCRIPTIONS ACT 1991 The Agent has not tested any apparatus, equipment, fixtures and fittings or services and so cannot verify that they are in working order or fit for the purpose. A Buyer is advised to obtain verification from their Solicitor or Surveyor. References to the Tenure of a Property are based on information supplied by the Seller. The Agent has not had sight of the title documents. A Buyer is advised to obtain verification from their Solicitor. You are advised to check the availability of this property before travelling any distance to view. Every effort and precaution has been made to ensure these particulars are correct and not misleading but their accuracy is not guaranteed nor do they form part of any contract. If there is any point which is of particular importance to you, please contact us and we will provide any information you require. This is advisable, particularly if you intend to travel some distance to view the property. The mention of any appliances and services within these details does not imply that they are in full and efficient working order. These particulars are in draft form awaiting Vendors confirmation of their accuracy. These details must therefore be taken as a guide only.