



Chichester Lane, Eccles

Manchester



In Excess of £275,000

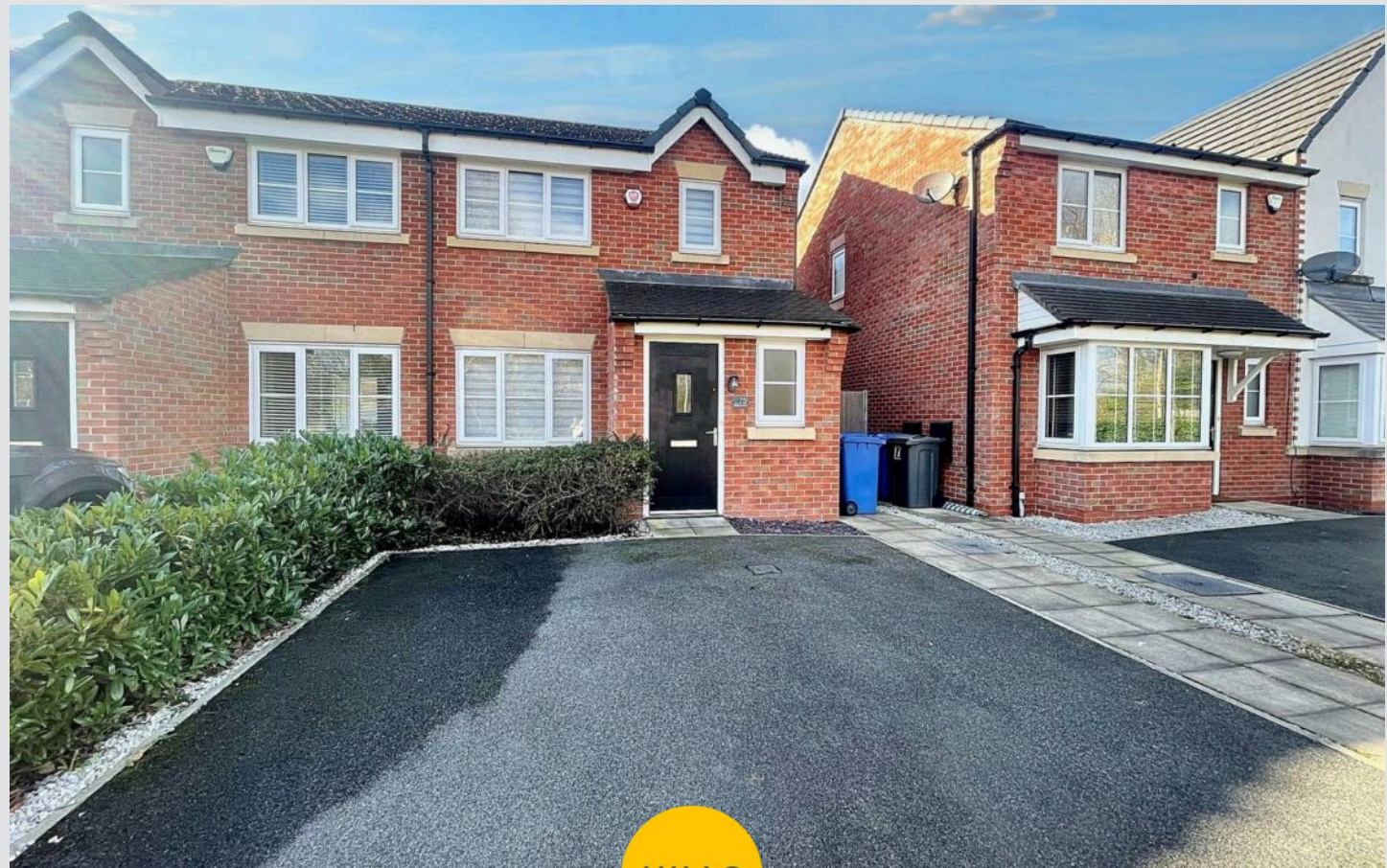
Chichester Lane

Eccles, Manchester

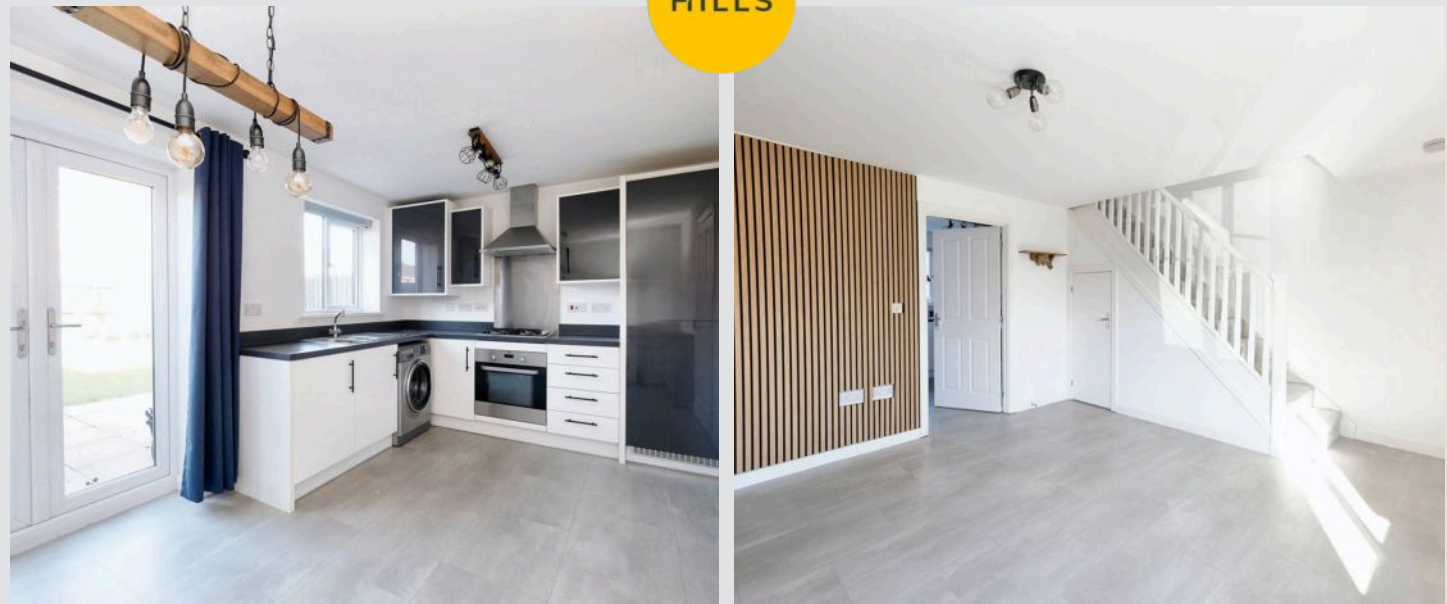
Beautifully presented three bed semi on Bridgewater Development, canal views, no chain. Tiled lounge, sleek kitchen, guest w.c. three bedrooms, family bathroom, fully boarded loft. Off-road parking, artificial lawn, patio, raised beds. Ideal for families and first-time buyers. Close to schools, amenities, transport links.

Council Tax band: C

- Open Plan Kitchen & Dining Space
- Located on the Bridgewater Development and Offered with No Onward Chain
- Spacious Lounge
- Three Generous Bedrooms
- Family Bathroom Suite & Guest W.C.
- South Facing Rear Garden & Off Road Parking for Multiple Cars
- Located just a Short Walk to Monton Village down the Bridgewater Canal
- Surrounded by Excellent Amenities & Transport Links
- Within Catchment for Highly Regarded Schools



HILLS



Entrance Hallway

Entered via a composite front door. Complete with a ceiling light point, wall mounted radiator and tiled flooring.

Lounge

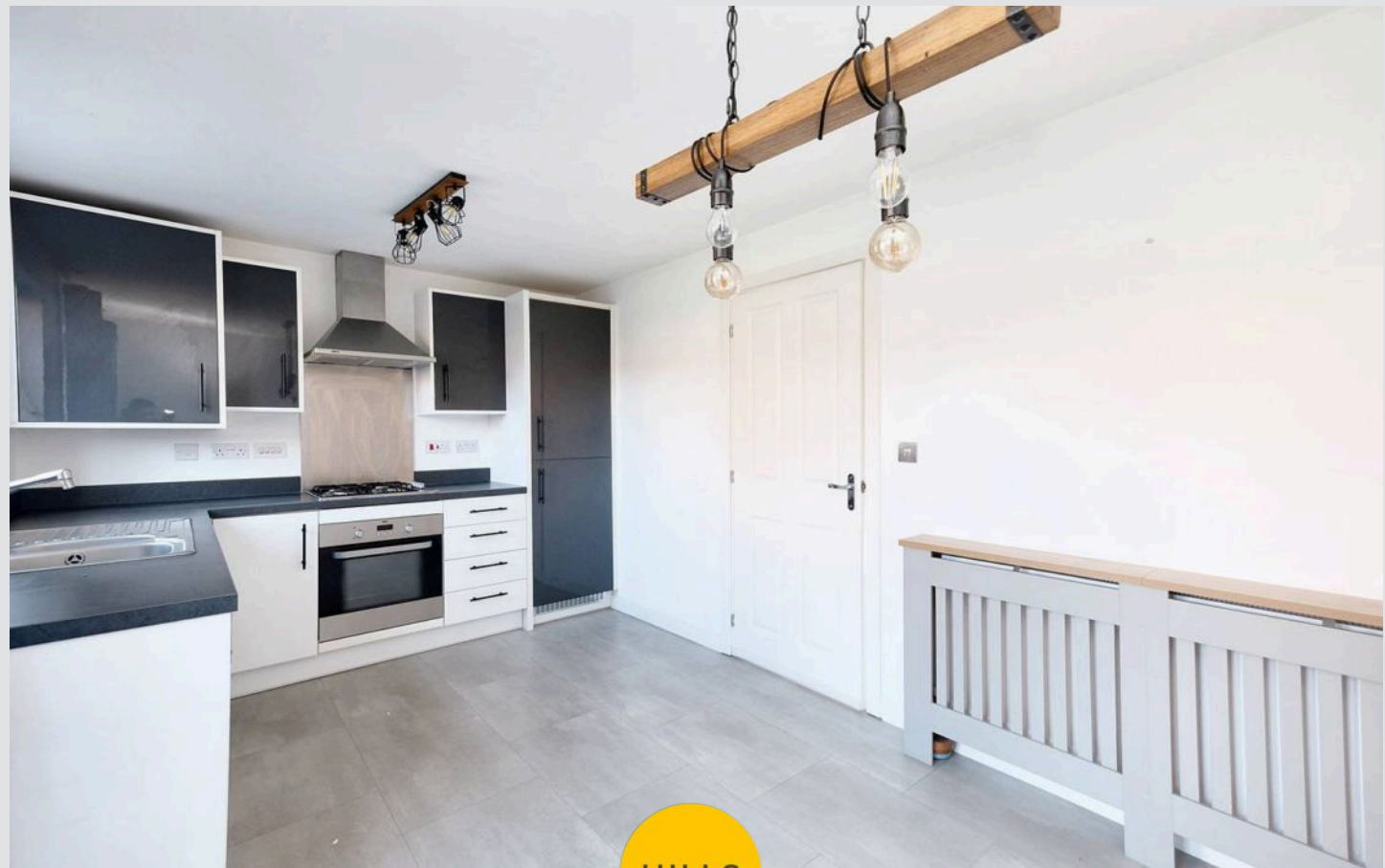
14' 9" x 13' 1" (4.50m x 3.99m)

Complete with a ceiling light point, double glazed window and wall mounted radiator. Fitted with storage under stairs and tiled flooring.

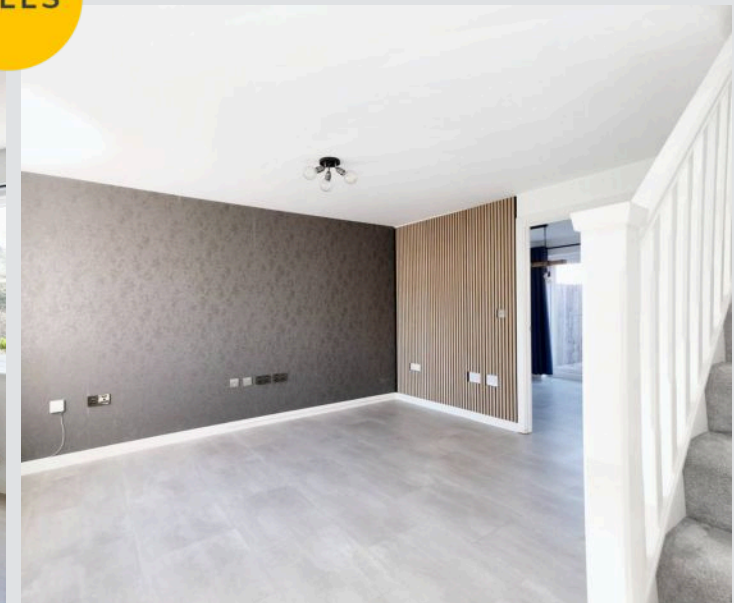
Kitchen / Diner

14' 8" x 9' 1" (4.47m x 2.77m)

Featuring complementary wall and base units with integral stainless steel sink and fridge freezer. Space for a washing machine. Complete with two ceiling light points, double glazed window and wall mounted radiator. Fitted with tiled flooring.



HILLS



Bedroom One

11' 8" x 8' 2" (3.56m x 2.49m)

Complete with a ceiling light point, double glazed window and wall mounted radiator. Fitted with carpet flooring.

Bedroom Two

10' 4" x 8' 2" (3.15m x 2.49m)

Complete with a ceiling light point, double glazed window and wall mounted radiator. Fitted with carpet flooring.

Bedroom Three

6' 5" x 6' 4" (1.96m x 1.93m)

Complete with a ceiling light point, double glazed window and wall mounted radiator. Fitted with carpet flooring.

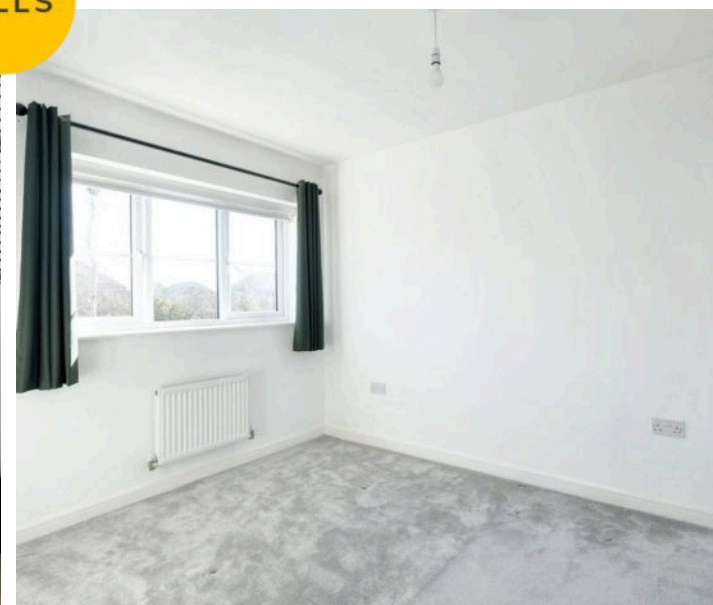
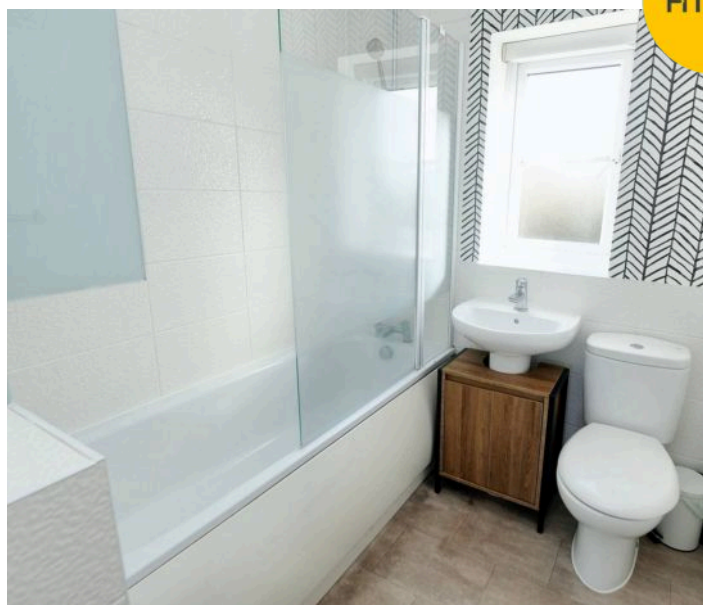
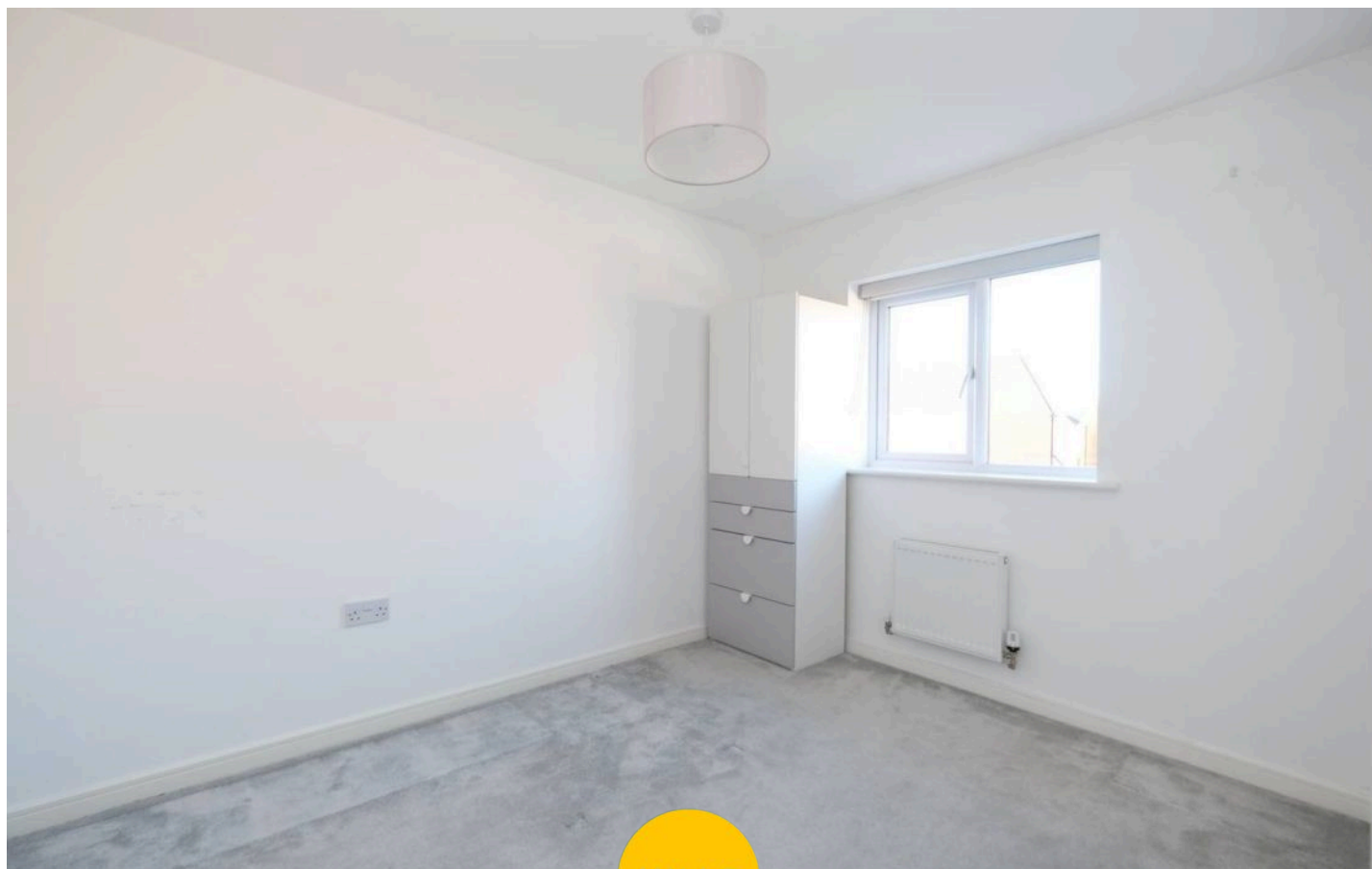
Bathroom

6' 4" x 6' 1" (1.93m x 1.85m)

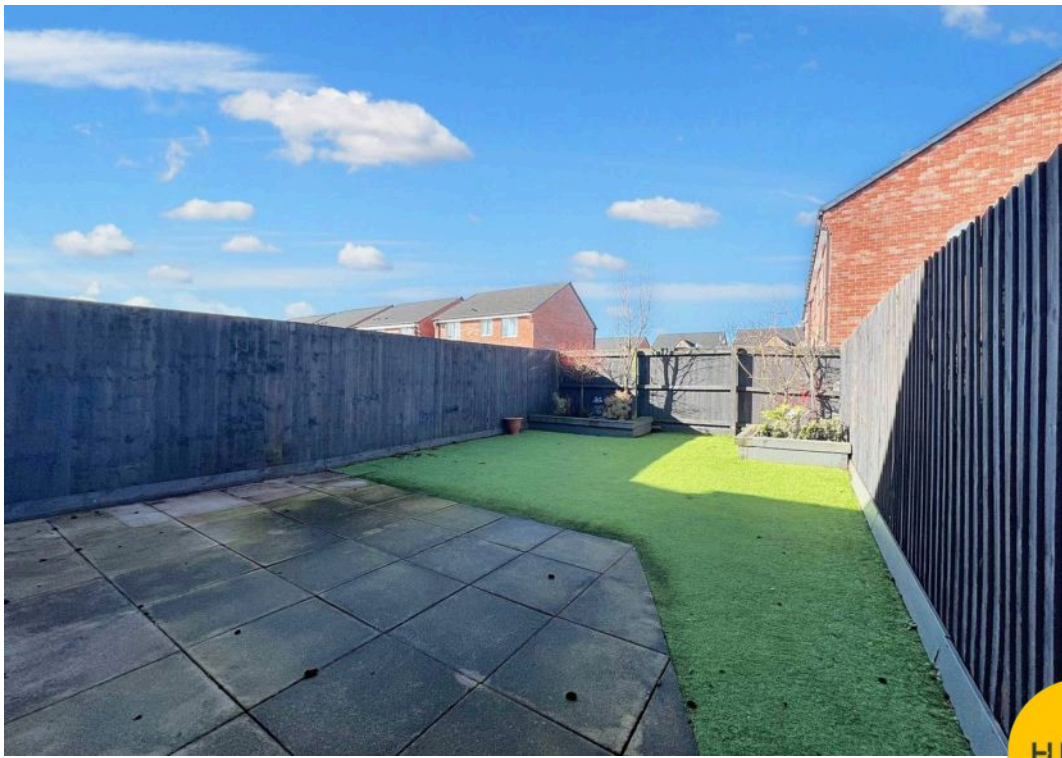
Featuring a three piece suite including a bath with shower over, hand wash basin and W.C. Complete with a ceiling light point, double glazed window and wall mounted radiator. Fitted with part tiled walls and lino flooring.

External

To the rear of the property is a garden with artificial lawn with paved patio and raised planters. Gated side access.

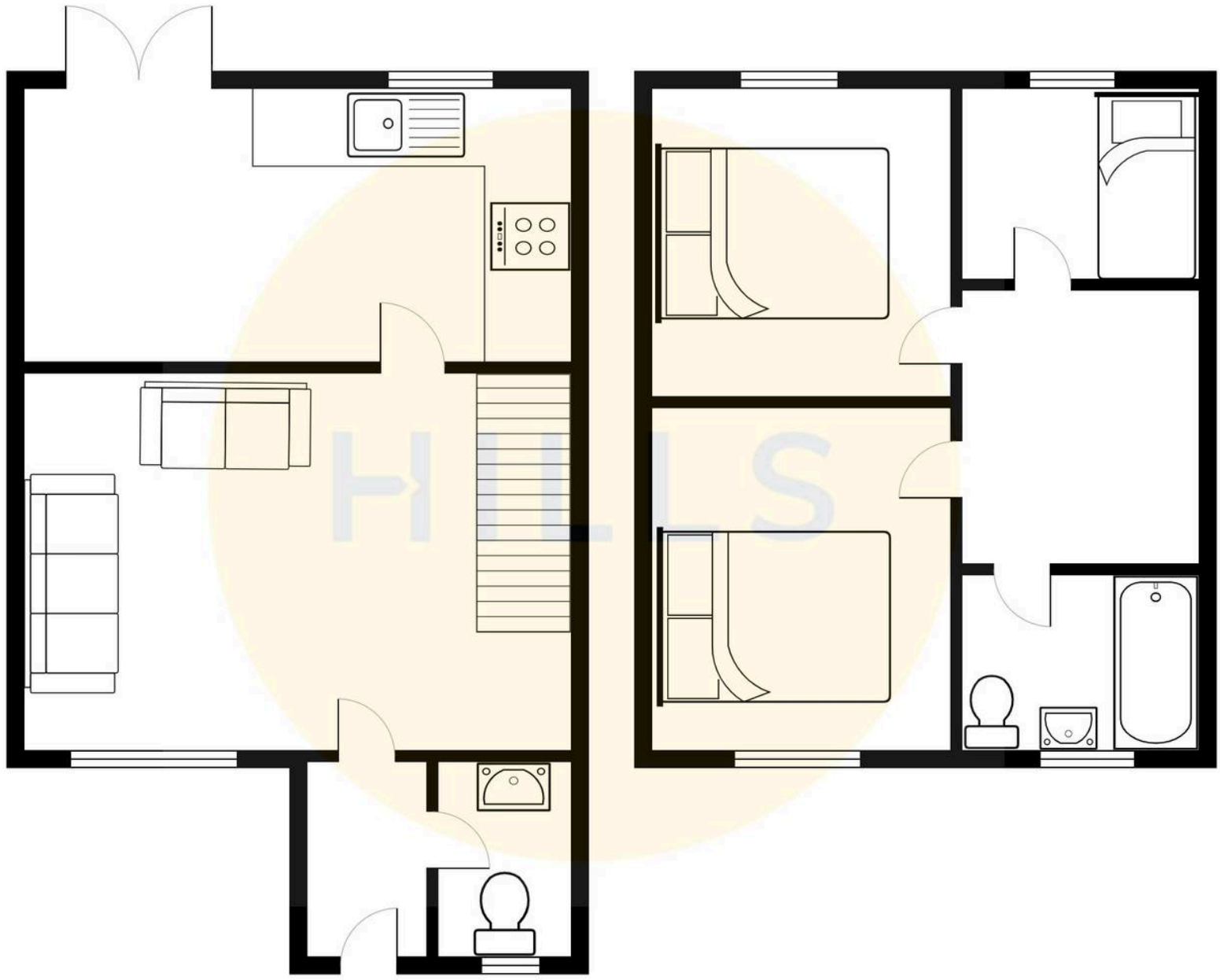


HILLS



HILLS







Hills | Salfords Estate Agent

Hills Residential, Sentinel House Albert Street – M30 0SS

0161 707 4900

sales@hills.agency

www.hills.agency/



THE PROPERTY MISDESCRIPTIONS ACT 1991 The Agent has not tested any apparatus, equipment, fixtures and fittings or services and so cannot verify that they are in working order or fit for the purpose. A Buyer is advised to obtain verification from their Solicitor or Surveyor. References to the Tenure of a Property are based on information supplied by the Seller. The Agent has not had sight of the title documents. A Buyer is advised to obtain verification from their Solicitor. You are advised to check the availability of this property before travelling any distance to view. Every effort and precaution has been made to ensure these particulars are correct and not misleading but their accuracy is not guaranteed nor do they form part of any contract. If there is any point which is of particular importance to you, please contact us and we will provide any information you require. This is advisable, particularly if you intend to travel some distance to view the property. The mention of any appliances and services within these details does not imply that they are in full and efficient working order. These particulars are in draft form awaiting Vendors confirmation of their accuracy. These details must therefore be taken as a guide only.