

Darwell Avenue, Eccles

Manchester



In Excess of £220,000

Darwell Avenue

Eccles, Manchester

WELL PRESENTED THREE BEDROOM TERRACE, FEATURING TWO RECEPTION ROOMS, a MODERN KITCHEN AND BATHROOM, THREE BEDROOMS and is WALKING DISTANCE TO THE TRAFFORD CENTRE!
Council Tax band: A

Tenure: Freehold

- THREE GENEROUS BEDROOMS
- POSITIONED ON A QUIET CUL DE SAC
- MODERN FITTED KICTHEN & BATHROOM
- TWO SPACIOUS RECEPTION ROOMS
- WITHIN WALKING DISTANCE TO THE TRAFFORD CENTRE
- LOW MAITENANCE FRONT & REAR GARDENS
- CLOSE TO EXCELLENT AMENITIES & TRANSPORT LINKS
- CLOSE TO GOOD LOCAL SCHOOLING



HILLS



Entrance Hallway

Entered via a uPVC front door. Complete with a ceiling light point, wall mounted radiator and laminate flooring.

Lounge

10' 8" x 14' 2" (3.25m x 4.32m)

Complete with a ceiling light point, double glazed bay window and wall mounted radiator. Fitted with carpet flooring.

Dining Room

11' 11" x 11' 5" (3.63m x 3.49m)

Complete with a ceiling light point, double glazed window and wall mounted radiator. Fitted with carpet flooring.

Kitchen

9' 4" x 8' 11" (2.84m x 2.72m)

Featuring complementary wall and base units with space for a washing machine, fridge freezer and oven. Complete with a ceiling light point, double glazed window and wall mounted radiator. Fitted with uPVC door, storage cupboard and laminate flooring.

Landing

Complete with a ceiling light point, storage cupboard and carpet flooring.

Bedroom One

12' 3" x 8' 8" (3.73m x 2.63m)

Complete with a ceiling light point, double glazed window and wall mounted radiator. Fitted with carpet flooring.

Bedroom Two

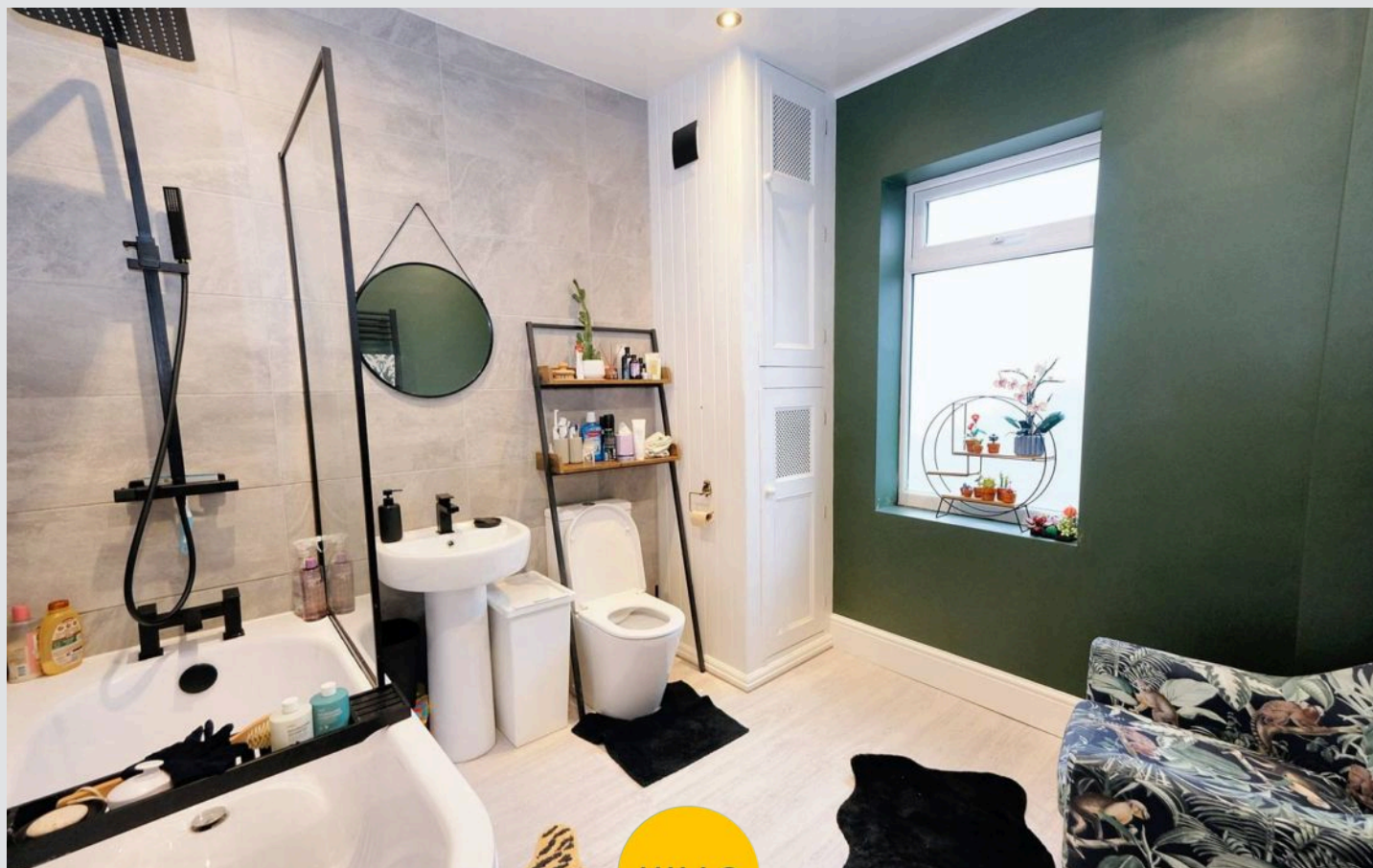
12' 2" x 9' 1" (3.71m x 2.77m)

Complete with a ceiling light point, double glazed window and wall mounted radiator. Fitted with carpet flooring.

Bedroom Three

8' 11" x 5' 9" (2.72m x 1.76m)

Complete with a ceiling light point, double glazed window and wall mounted radiator. Fitted with carpet flooring.



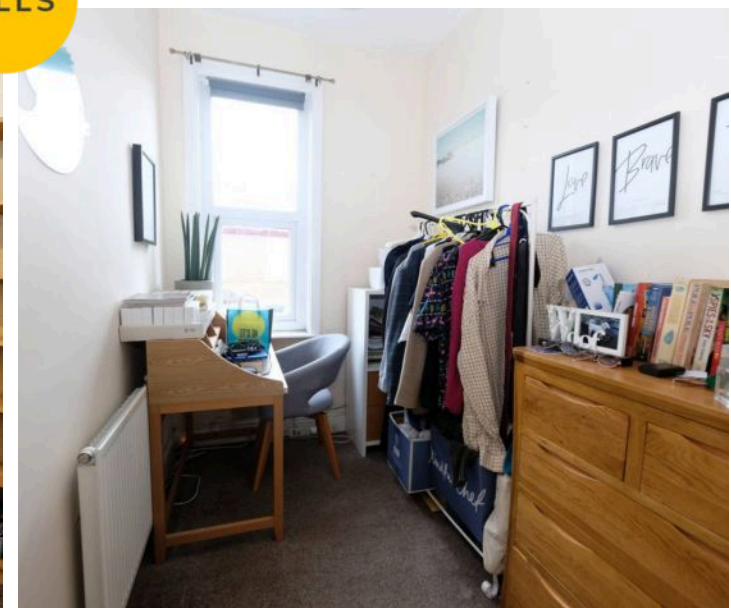
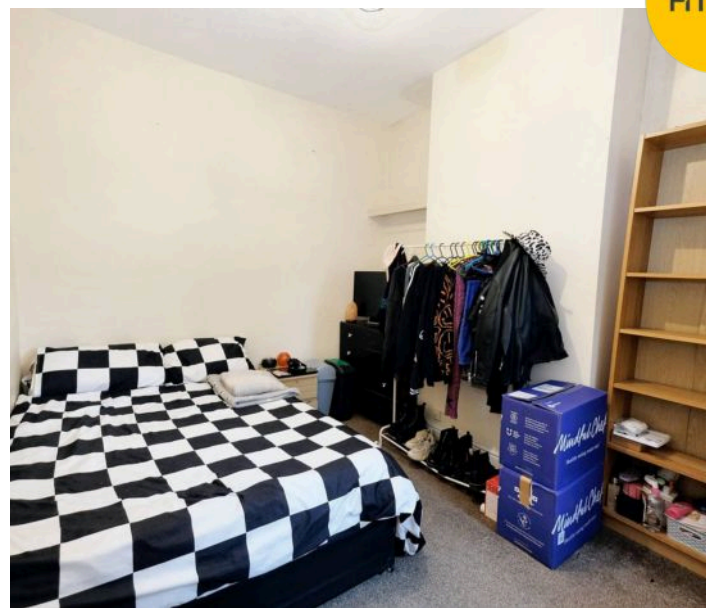
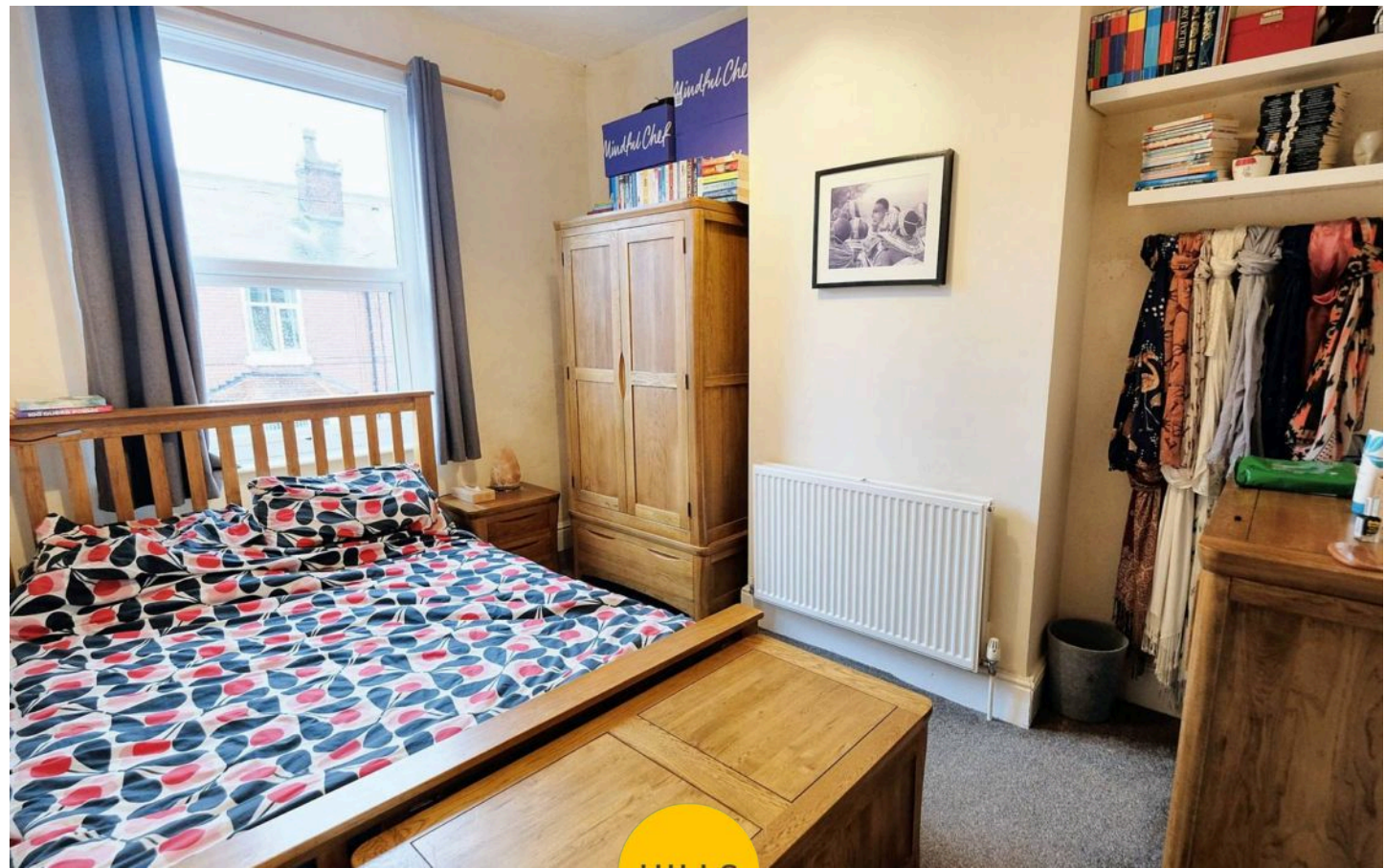
Bathroom

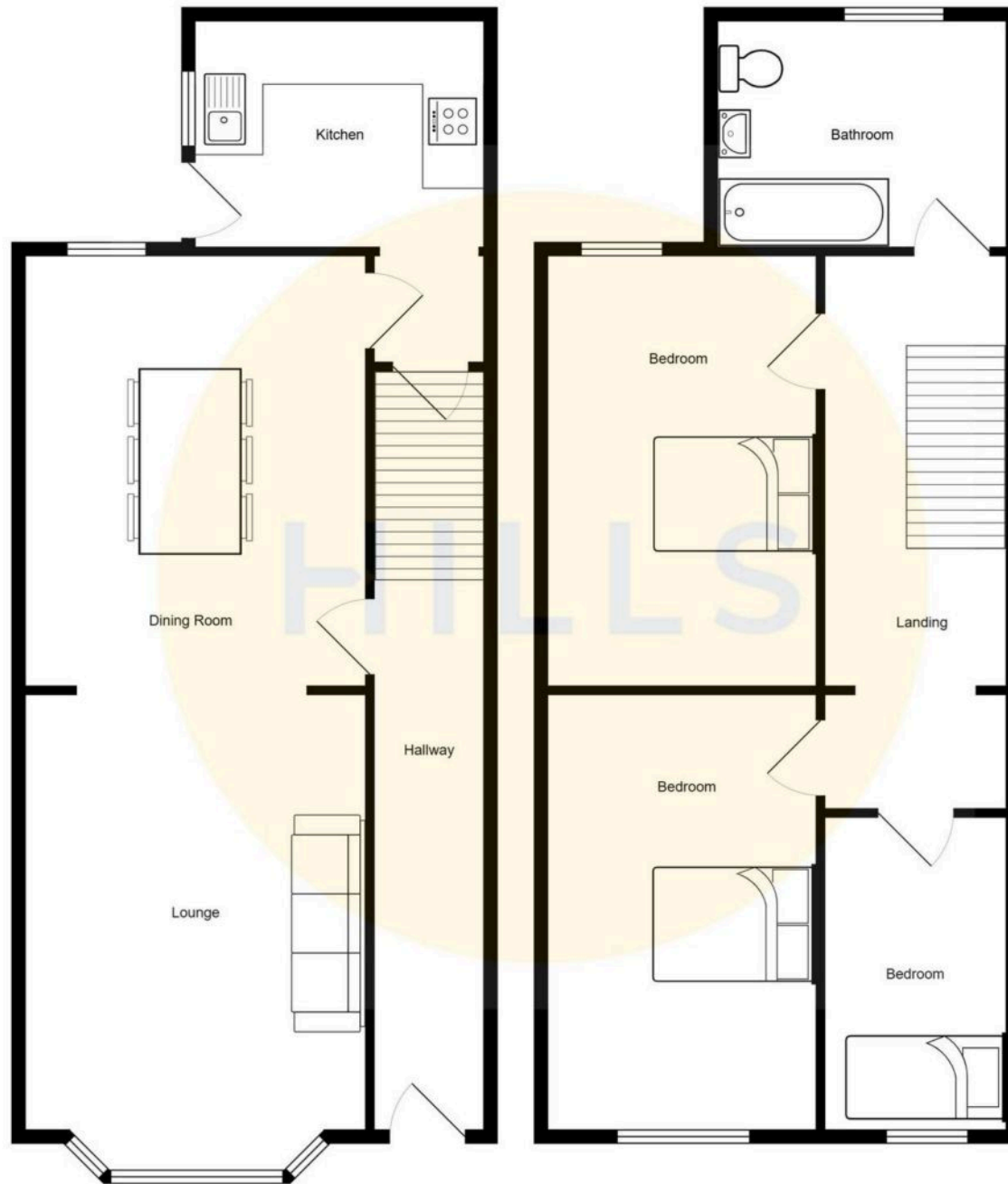
9' 0" x 8' 8" (2.74m x 2.65m)

Featuring a three piece suite including a bath with shower over, hand wash basin and W.C. Complete with ceiling spotlights, double glazed window and towel heater. Fitted with laminate flooring.

External

To the rear of the property is a low maintenance paved courtyard.







Hills | Salfords Estate Agent

Hills Residential, Sentinel House Albert Street - M30 0SS

0161 707 4900

sales@hills.agency

www.hills.agency/



THE PROPERTY MISDESCRIPTIONS ACT 1991 The Agent has not tested any apparatus, equipment, fixtures and fittings or services and so cannot verify that they are in working order or fit for the purpose. A Buyer is advised to obtain verification from their Solicitor or Surveyor. References to the Tenure of a Property are based on information supplied by the Seller. The Agent has not had sight of the title documents. A Buyer is advised to obtain verification from their Solicitor. You are advised to check the availability of this property before travelling any distance to view. Every effort and precaution has been made to ensure these particulars are correct and not misleading but their accuracy is not guaranteed nor do they form part of any contract. If there is any point which is of particular importance to you, please contact us and we will provide any information you require. This is advisable, particularly if you intend to travel some distance to view the property. The mention of any appliances and services within these details does not imply that they are in full and efficient working order. These particulars are in draft form awaiting Vendors confirmation of their accuracy. These details must therefore be taken as a guide only.