



Ellesmere Green, Eccles

Manchester



Offers in Region of **£200,000**

Ellesmere Green

Eccles, Manchester

Immaculately presented two bed apartment in Monton Village with homely feel. Spacious lounge, modern kitchen, two double beds, en suite, allocated parking. Village amenities, great transport links. Council Tax band: C

Tenure: Leasehold

- Fabulous Ground Floor Apartment Located in the Heart of Monton Village
- Spacious Bay Fronted Lounge, Open Plan with the Dining Space
- Modern Fitted Kitchen
- Two Double Bedrooms
- Three Piece Family Bathroom & En Suite to the Master Bedroom
- Well Kept Communal Spaces and Gardens
- Allocated Parking Space
- Fantastic Local Amenities including Shops, Bars & Restaurants just a Short Walk Away
- Excellent Public Transport & Motorway Links Close By



HILLS



Entrance Hallway

Complete with two ceiling light points, electric radiator and storage cupboard. Fitted with laminate flooring.

Lounge

19' 8" x 10' 5" (5.99m x 3.18m)

Complete with two ceiling light points, double glazed window and wall mounted radiator. Fitted with carpet flooring.

Dining Room

8' 9" x 8' 0" (2.67m x 2.44m)

Complete with a ceiling light point, double glazed window and electric radiator. Fitted with laminate flooring.

Kitchen

8' 2" x 7' 9" (2.49m x 2.36m)

Featuring complementary wall and base units with stainless steel extractor. Space for a washing machine, dishwasher, electric hob and oven. Complete with a ceiling light point and laminate flooring.

Bathroom

6' 8" x 5' 5" (2.03m x 1.65m)

Featuring a three piece suite including a bath with shower over, hand wash basin and W.C. Complete with ceiling spotlights, heated towel rail, part tiled walls and tiled flooring.

Bedroom One

12' 9" x 9' 1" (3.89m x 2.77m)

Complete with a ceiling light point, double glazed window and electric radiator. Fitted with laminate flooring.

En suite

6' 0" x 4' 3" (1.83m x 1.30m)

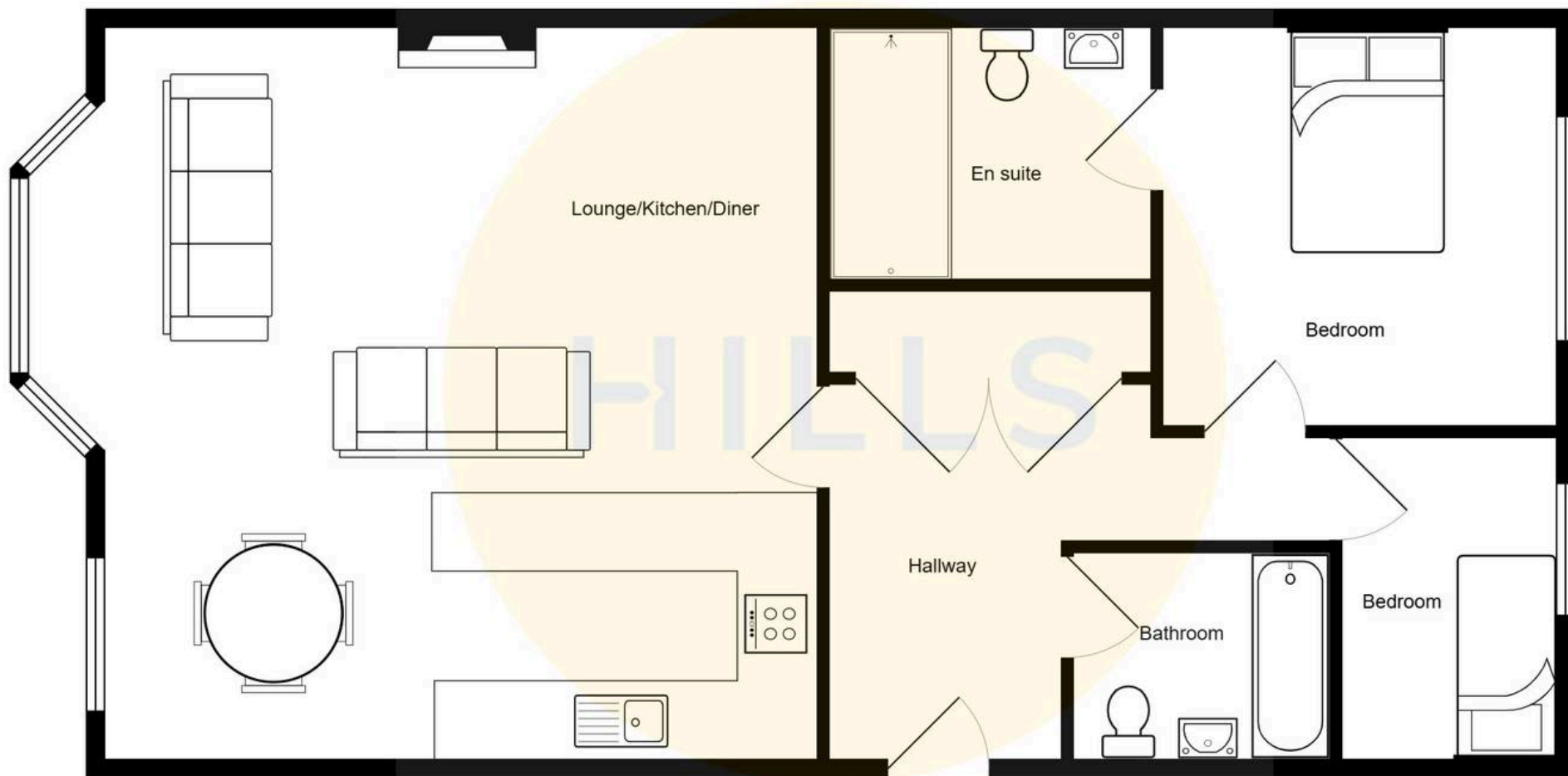
Featuring a three piece suite including shower cubicle, hand wash basin and W.C. Complete with ceiling spotlights, heated towel rail, tiled walls and flooring.

Bedroom Two

9' 9" x 9' 1" (2.97m x 2.77m)

Complete with a ceiling light point, double glazed window and electric radiator. Fitted with carpet flooring.







Hills | Salfords Estate Agent

Hills Residential, Sentinel House Albert Street – M30 0SS

0161 707 4900

sales@hills.agency

www.hills.agency/



THE PROPERTY MISDESCRIPTIONS ACT 1991 The Agent has not tested any apparatus, equipment, fixtures and fittings or services and so cannot verify that they are in working order or fit for the purpose. A Buyer is advised to obtain verification from their Solicitor or Surveyor. References to the Tenure of a Property are based on information supplied by the Seller. The Agent has not had sight of the title documents. A Buyer is advised to obtain verification from their Solicitor. You are advised to check the availability of this property before travelling any distance to view. Every effort and precaution has been made to ensure these particulars are correct and not misleading but their accuracy is not guaranteed nor do they form part of any contract. If there is any point which is of particular importance to you, please contact us and we will provide any information you require. This is advisable, particularly if you intend to travel some distance to view the property. The mention of any appliances and services within these details does not imply that they are in full and efficient working order. These particulars are in draft form awaiting Vendors confirmation of their accuracy. These details must therefore be taken as a guide only.