



Laburnum Street

Salford



£220,000

# Laburnum Street

Salford

\*WITHIN WALKING DISTANCE OF SALFORD QUAYS & MEDIA CITY\* TAKE A LOOK at this FANTASTIC two bedroom property located on the popular 'Chimney Pot Park' Development!

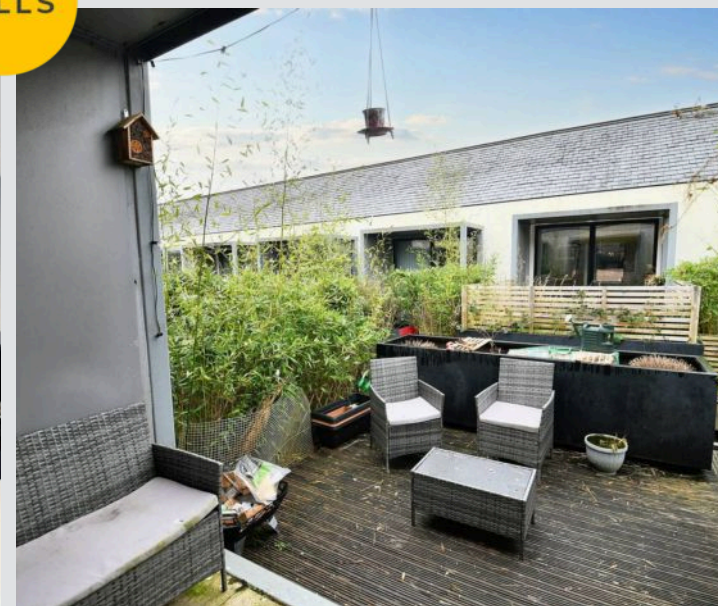
Council Tax band: A

Tenure: Leasehold

- Two Bedroom Property Located on the Popular 'Chimney Pot Park' Development
- Within Walking Distance of Salford Quays & Media City
- Just a Short Walk from Langworthy Tram Stop, which Provides Direct Access into Manchester City Centre
- Two Double Bedrooms
- Modern Three-Piece Bathroom Complete with a 'Sunken' Bath
- Large 21FT Lounge Diner with Sliding Doors to the Rear
- Modern Kitchen Diner on the Top Floor Featuring a 'Chimney' Style Lightwell
- Garden Terrace to the Rear with Decking and Paving
- Ideal First Time Home or Investment



HILLS



### Entrance Hallway

Complete with ceiling spotlights, wall mounted radiator and carpet flooring.

### Lounge/Diner

Dimensions: 23' 3" x 8' 2" (7.08m x 2.49m). Complete with two ceiling light points, double glazed window, wall mounted radiator and laminate flooring.

### Kitchen

Dimensions: 11' 5" x 8' 6" (3.48m x 2.59m). Base units with complimentary roll top work surfaces and integrated sink with drainer, electric hob and oven with extractor over, fridge/freezer. Complete with ceiling light points and laminate flooring.

### Bedroom One

Dimensions: 11' 9" x 8' 1" (3.58m x 2.46m). Complete with a ceiling light point, lightwell and wall mounted radiator. Fitted with carpet flooring.

### Bedroom Two

Dimensions: 8' 4" x 7' 6" (2.54m x 2.28m). Complete with a ceiling light point, double glazed window and wall mounted radiator. Fitted with carpet flooring.

### Bathroom

Dimensions: 5' 9" x 5' 1" (1.75m x 1.55m). Complete with a three piece suite including a bath with shower over, hand wash basin and W.C. Complete with a ceiling light point.

### Externally

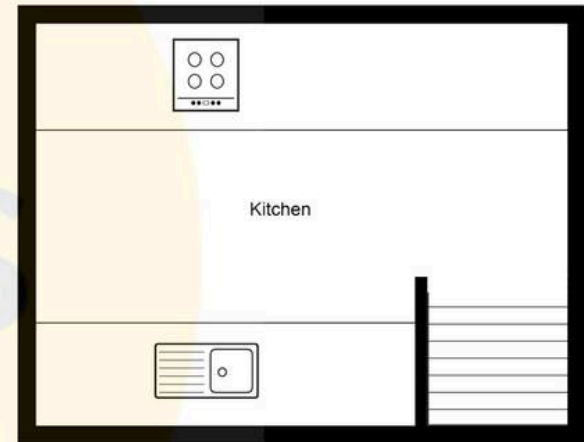
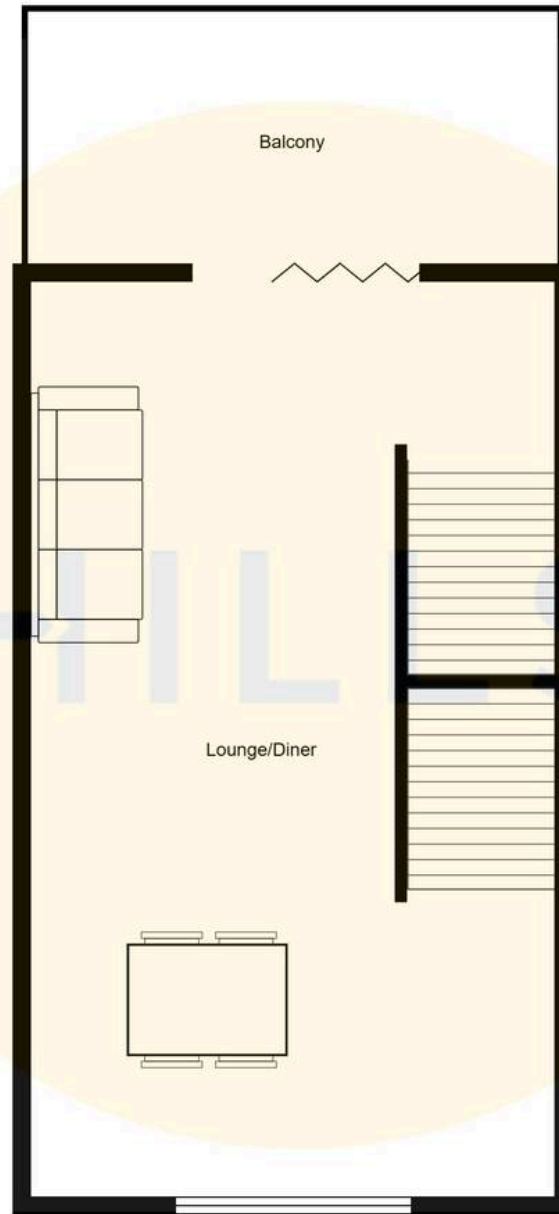
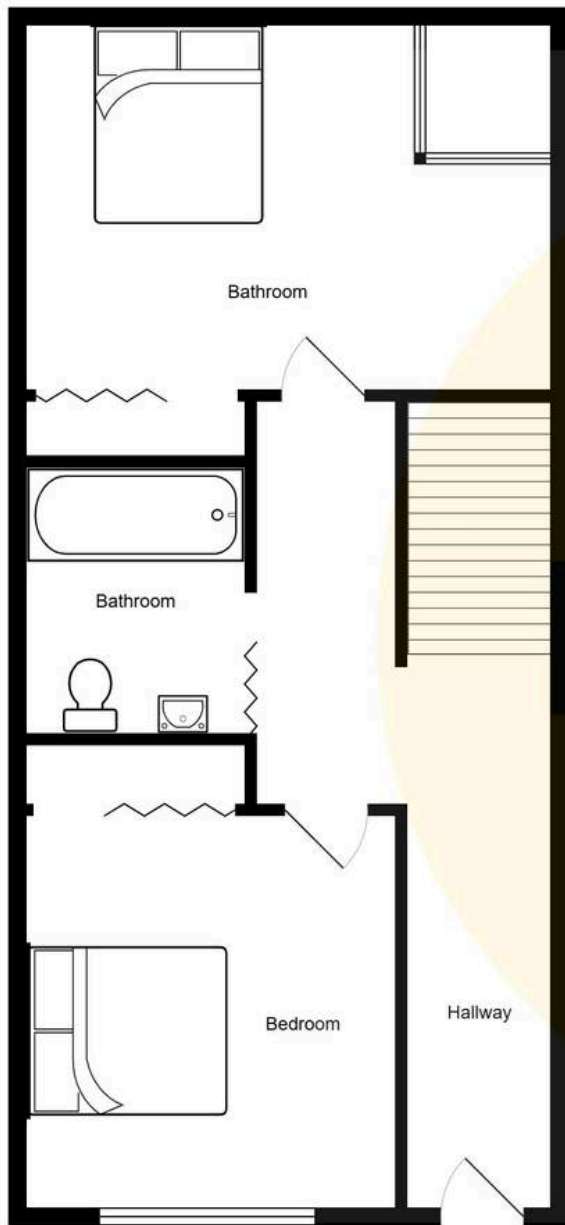
Private decked seating area on the first floor terrace.





HILLS







## Hills | Salfords Estate Agent

Hills Residential, Sentinel House Albert Street – M30 0SS

0161 707 4900

[sales@hills.agency](mailto:sales@hills.agency)

[www.hills.agency/](http://www.hills.agency/)



THE PROPERTY MISDESCRIPTIONS ACT 1991 The Agent has not tested any apparatus, equipment, fixtures and fittings or services and so cannot verify that they are in working order or fit for the purpose. A Buyer is advised to obtain verification from their Solicitor or Surveyor. References to the Tenure of a Property are based on information supplied by the Seller. The Agent has not had sight of the title documents. A Buyer is advised to obtain verification from their Solicitor. You are advised to check the availability of this property before travelling any distance to view. Every effort and precaution has been made to ensure these particulars are correct and not misleading but their accuracy is not guaranteed nor do they form part of any contract. If there is any point which is of particular importance to you, please contact us and we will provide any information you require. This is advisable, particularly if you intend to travel some distance to view the property. The mention of any appliances and services within these details does not imply that they are in full and efficient working order. These particulars are in draft form awaiting Vendors confirmation of their accuracy. These details must therefore be taken as a guide only.