

Nursery Street

Salford



In Excess of £210,000

Nursery Street

Salford

Council Tax band: A

Tenure: Leasehold

- THREE BEDROOM TERRACED PROPERTY
- COMING TO THE MARKET CHAIN FREE!
- MODERN FITTED KITCHEN AND BATHROOM
- DOWNSTAIRS W.C.
- LOW MAINTENANCE FRONT AND REAR GARDENS
- THREE GENEROUS SIZED BEDROOMS
- WELL PRESENTED THROUGHOUT
- SPACIOUS LOUNGE AND DINING AREA
- Ample storage space throughout
- Within easy access of excellent transport links into Salford Quays, Media City and Manchester City Centre!



HILLS



Lounge

15' 9" x 10' 3" (4.79m x 3.13m)

Complete with a ceiling light point, double glazed window and wall mounted radiator. Fitted with carpet flooring.

Hallway

18' 10" x 5' 10" (5.75m x 1.79m)

Complete with a ceiling light point, wall mounted radiator and carpet flooring. uPVC rear door.

Dining Room

8' 2" x 9' 5" (2.49m x 2.88m)

Complete with a ceiling light point, wall mounted radiator and carpet flooring.

Kitchen

9' 7" x 9' 5" (2.92m x 2.86m)

Featuring complementary wall and base units with space for a fridge freezer, washing machine, dryer, dishwasher, cooker and extractor. Complete with a ceiling light point, double glazed window and tiled flooring.

Landing

Complete with a ceiling light point and carpet flooring.

Bedroom One

8' 10" x 12' 0" (2.68m x 3.65m)

Complete with a ceiling light point, double glazed window and wall mounted radiator. Fitted with storage cupboard and carpet flooring.

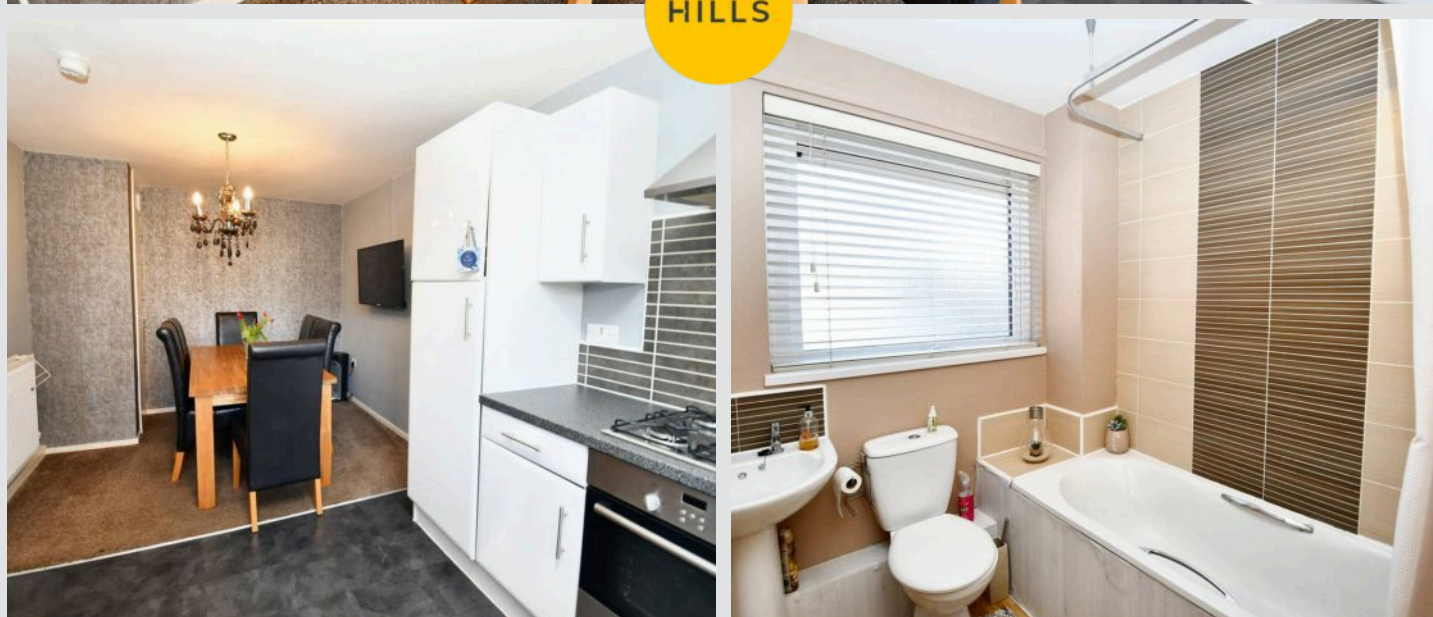
Bedroom Two

13' 2" x 8' 9" (4.01m x 2.66m)

Featuring fitted wardrobes. Complete with a ceiling light point, double glazed window and wall mounted radiator. Fitted with carpet flooring.



HILLS



Bedroom Three

9' 7" x 7' 0" (2.92m x 2.14m)

Featuring fitted wardrobes. Complete with a ceiling light point, double glazed window and wall mounted radiator. Fitted with carpet flooring.

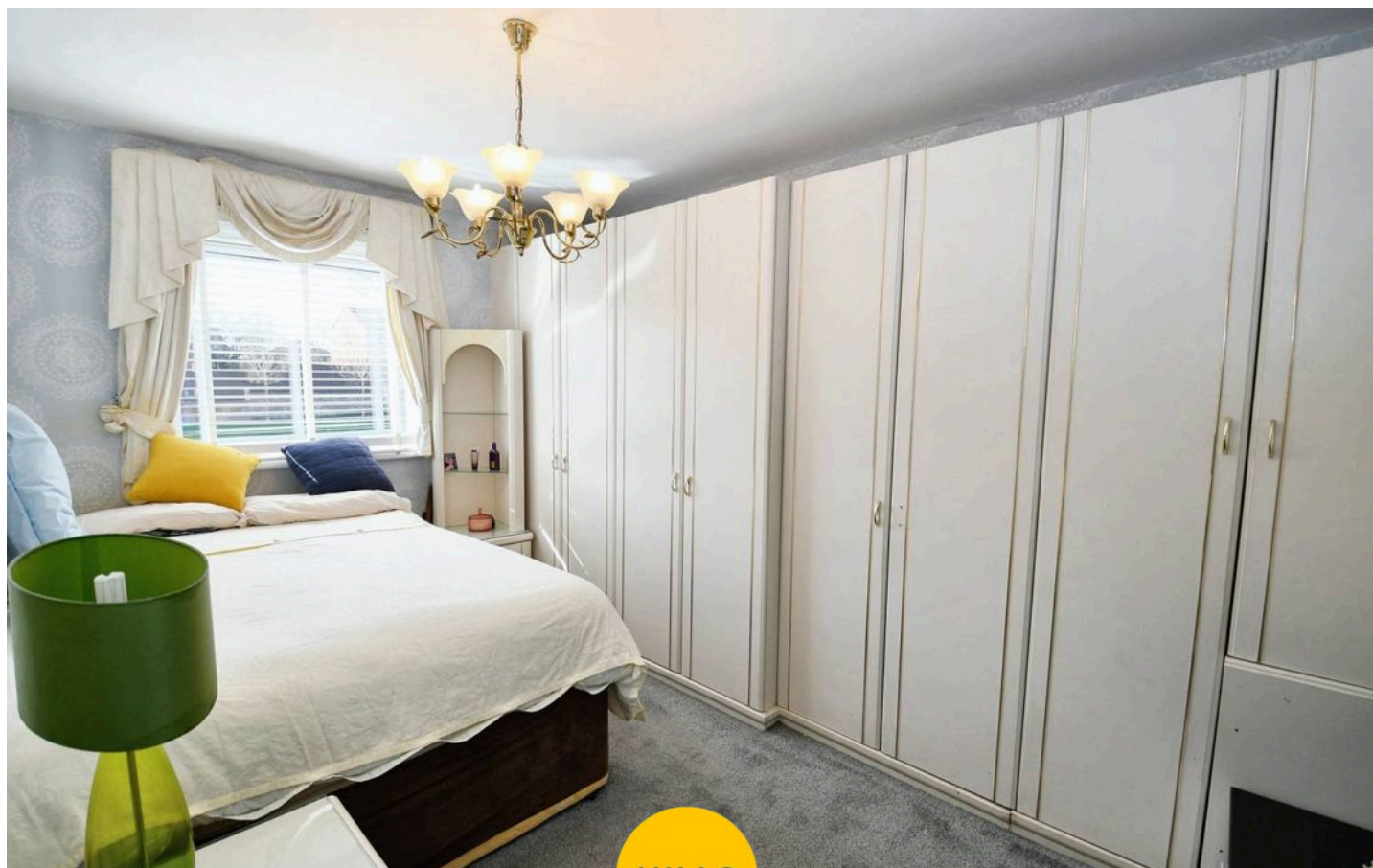
Bathroom

6' 7" x 6' 8" (2.00m x 2.04m)

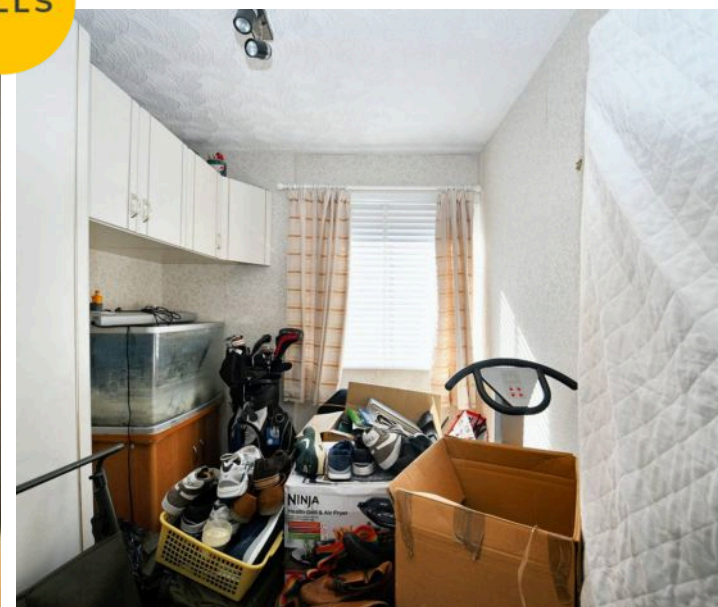
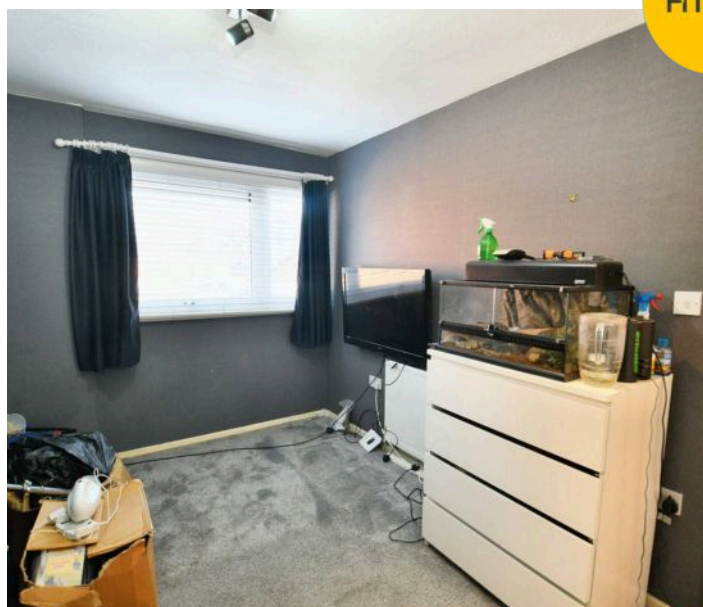
Featuring a three piece suite including bath with shower over, hand wash basin and W.C. Complete with a ceiling light point, double glazed window and laminate flooring.

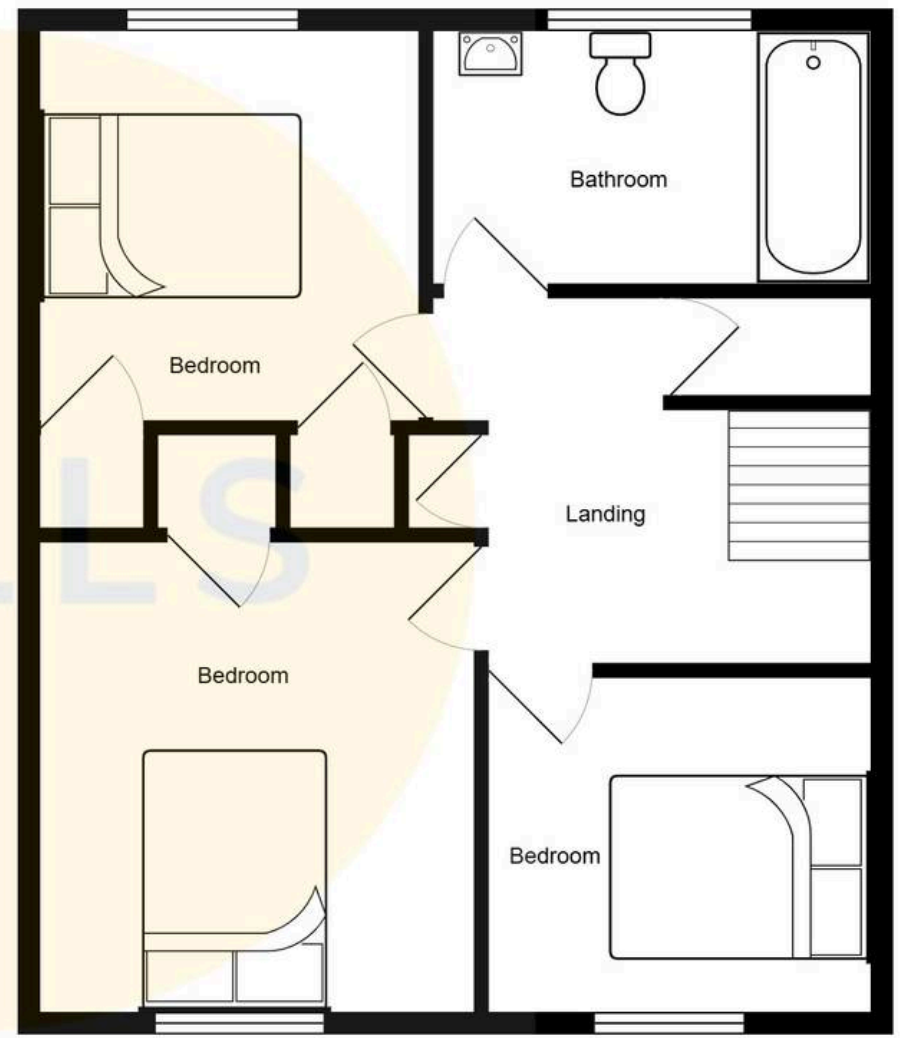
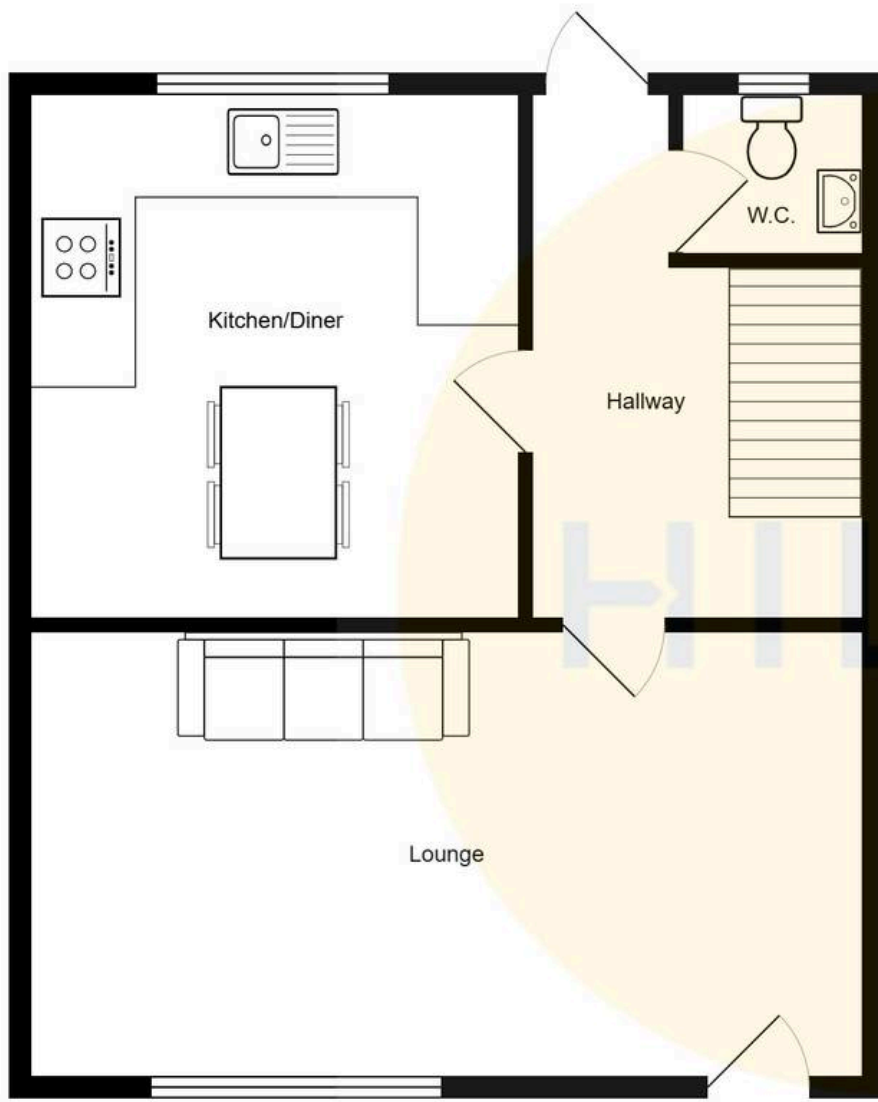
External

To the rear of the property is a low maintenance paved garden.



HILLS







Hills | Salfords Estate Agent

Hills Residential, Sentinel House Albert Street - M30 0SS

0161 707 4900

sales@hills.agency

www.hills.agency/



THE PROPERTY MISDESCRIPTIONS ACT 1991 The Agent has not tested any apparatus, equipment, fixtures and fittings or services and so cannot verify that they are in working order or fit for the purpose. A Buyer is advised to obtain verification from their Solicitor or Surveyor. References to the Tenure of a Property are based on information supplied by the Seller. The Agent has not had sight of the title documents. A Buyer is advised to obtain verification from their Solicitor. You are advised to check the availability of this property before travelling any distance to view. Every effort and precaution has been made to ensure these particulars are correct and not misleading but their accuracy is not guaranteed nor do they form part of any contract. If there is any point which is of particular importance to you, please contact us and we will provide any information you require. This is advisable, particularly if you intend to travel some distance to view the property. The mention of any appliances and services within these details does not imply that they are in full and efficient working order. These particulars are in draft form awaiting Vendors confirmation of their accuracy. These details must therefore be taken as a guide only.