

Trippier Road, Eccles
Manchester



In Excess of £200,000

Trippier Road

Eccles, Manchester

Welcoming this THREE BEDROOM TERRACED PROPERTY coming to the market CHAIN FREE and located in the POPULAR PEEL GREEN AREA! This CHAIN FREE PROPERTY is perfect for first-time buyers or families! Council Tax band: A

Tenure: Freehold

- THREE BEDROOM terraced property
- Coming to the market CHAIN FREE
- Located within the POPULAR PEEL GREEN AREA!
- PERFECT FIRST TIME BUY OR FAMILY HOME!
- Low maintenance rear garden with brick built storage shed
- MODERN FITTED KITCHEN AND FAMILY BATHROOM
- TWO SPACIOUS RECEPTION ROOMS
- DRIVEWAY TO THE FRONT
- Educational settings for all ages within walking distance
- Surrounded by excellent amenities and within easy access of excellent transport links!



HILLS



Entrance Hallway

11' 0" x 6' 0" (3.35m x 1.83m)

Entered via a uPVC front door. Complete with a ceiling light point, wall mounted radiator and laminate flooring.

Lounge

14' 1" x 10' 5" (4.29m x 3.18m)

Complete with a ceiling light point, double glazed window and wall mounted radiator. Fitted with carpet flooring.

Kitchen

10' 6" x 16' 6" (3.20m x 5.03m)

Featuring complementary wall and base units with space for a washing machine, cooker and extractor. Complete with a ceiling light point, double glazed window and laminate flooring.

Reception Room Two

9' 4" x 10' 6" (2.84m x 3.20m)

Complete with a ceiling light point, double glazed window and wall mounted radiator. Fitted with carpet flooring.

Landing

Complete with a ceiling light point and carpet flooring.

Bedroom One

13' 7" x 10' 6" (4.14m x 3.20m)

Complete with a ceiling light point, double glazed window and wall mounted radiator. Fitted with carpet flooring.



Bedroom Two

13' 9" x 10' 5" (4.19m x 3.18m)

Complete with a ceiling light point, double glazed window and wall mounted radiator. Storage cupboard with boiler. Fitted with carpet flooring.

Bedroom Three

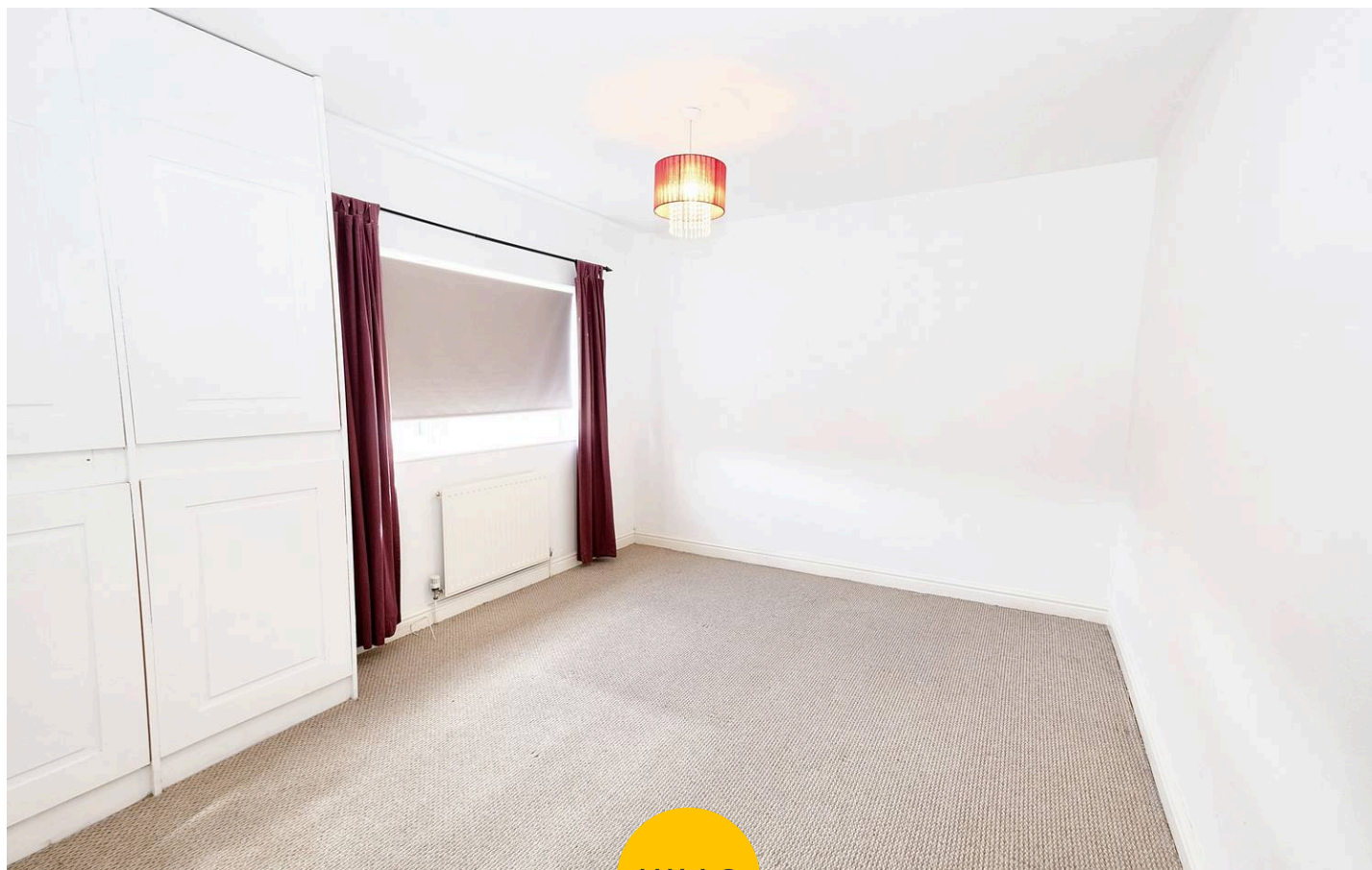
7' 3" x 9' 4" (2.21m x 2.84m)

Complete with a ceiling light point, double glazed window, wall mounted radiator and storage cupboard. Fitted with carpet flooring.

Bathroom

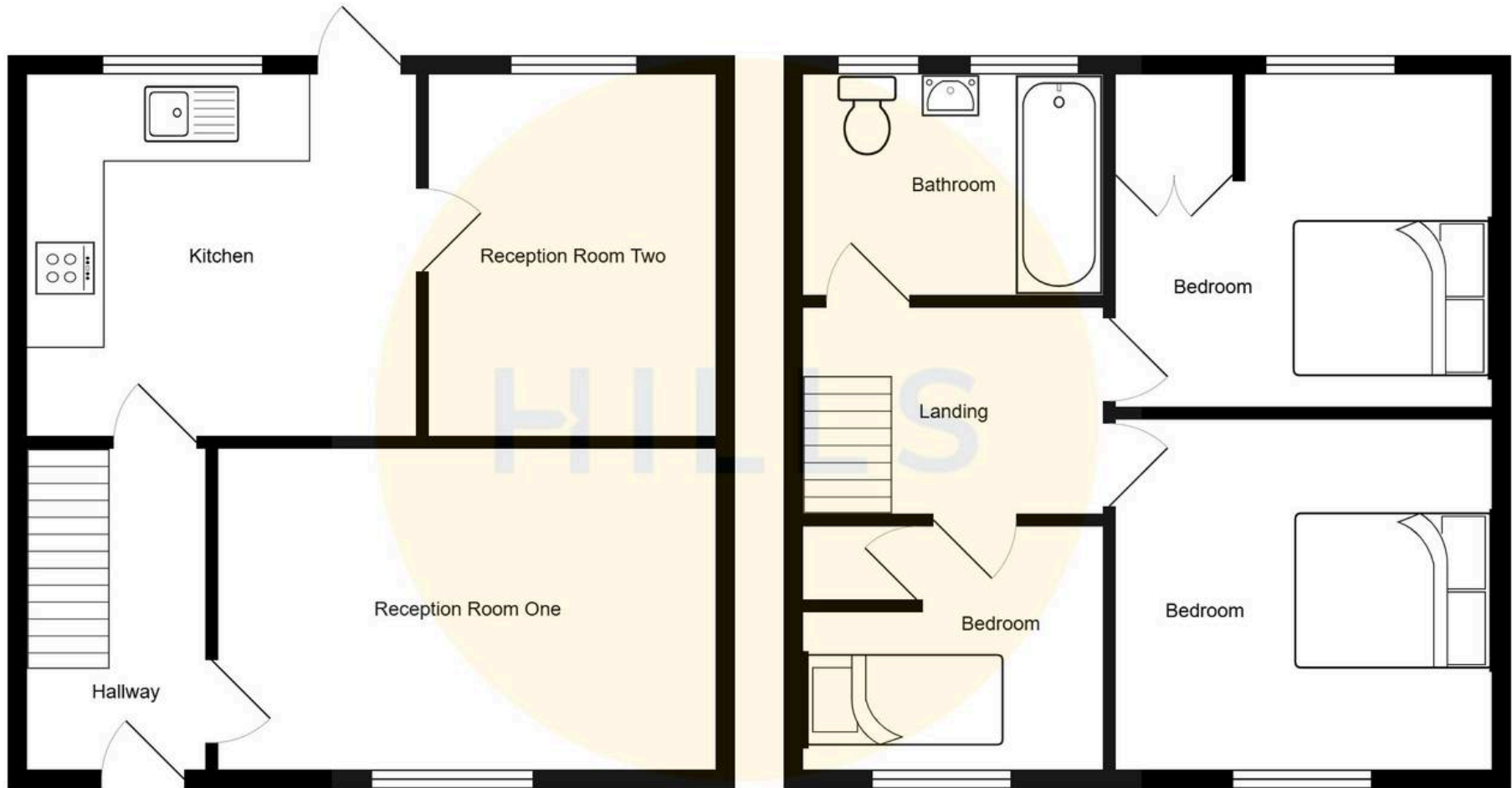
5' 3" x 7' 7" (1.60m x 2.31m)

Featuring a three piece suite including bath with shower over, hand wash basin and W.C. Complete with a ceiling light point, two double glazed windows and wall mounted radiator. Fitted with tiled flooring.



HILLS







Hills | Salfords Estate Agent

Hills Residential, Sentinel House Albert Street - M30 0SS

0161 707 4900

sales@hills.agency

www.hills.agency/



THE PROPERTY MISDESCRIPTIONS ACT 1991 The Agent has not tested any apparatus, equipment, fixtures and fittings or services and so cannot verify that they are in working order or fit for the purpose. A Buyer is advised to obtain verification from their Solicitor or Surveyor. References to the Tenure of a Property are based on information supplied by the Seller. The Agent has not had sight of the title documents. A Buyer is advised to obtain verification from their Solicitor. You are advised to check the availability of this property before travelling any distance to view. Every effort and precaution has been made to ensure these particulars are correct and not misleading but their accuracy is not guaranteed nor do they form part of any contract. If there is any point which is of particular importance to you, please contact us and we will provide any information you require. This is advisable, particularly if you intend to travel some distance to view the property. The mention of any appliances and services within these details does not imply that they are in full and efficient working order. These particulars are in draft form awaiting Vendors confirmation of their accuracy. These details must therefore be taken as a guide only.