

Velour Close

Salford



In Excess of £180,000

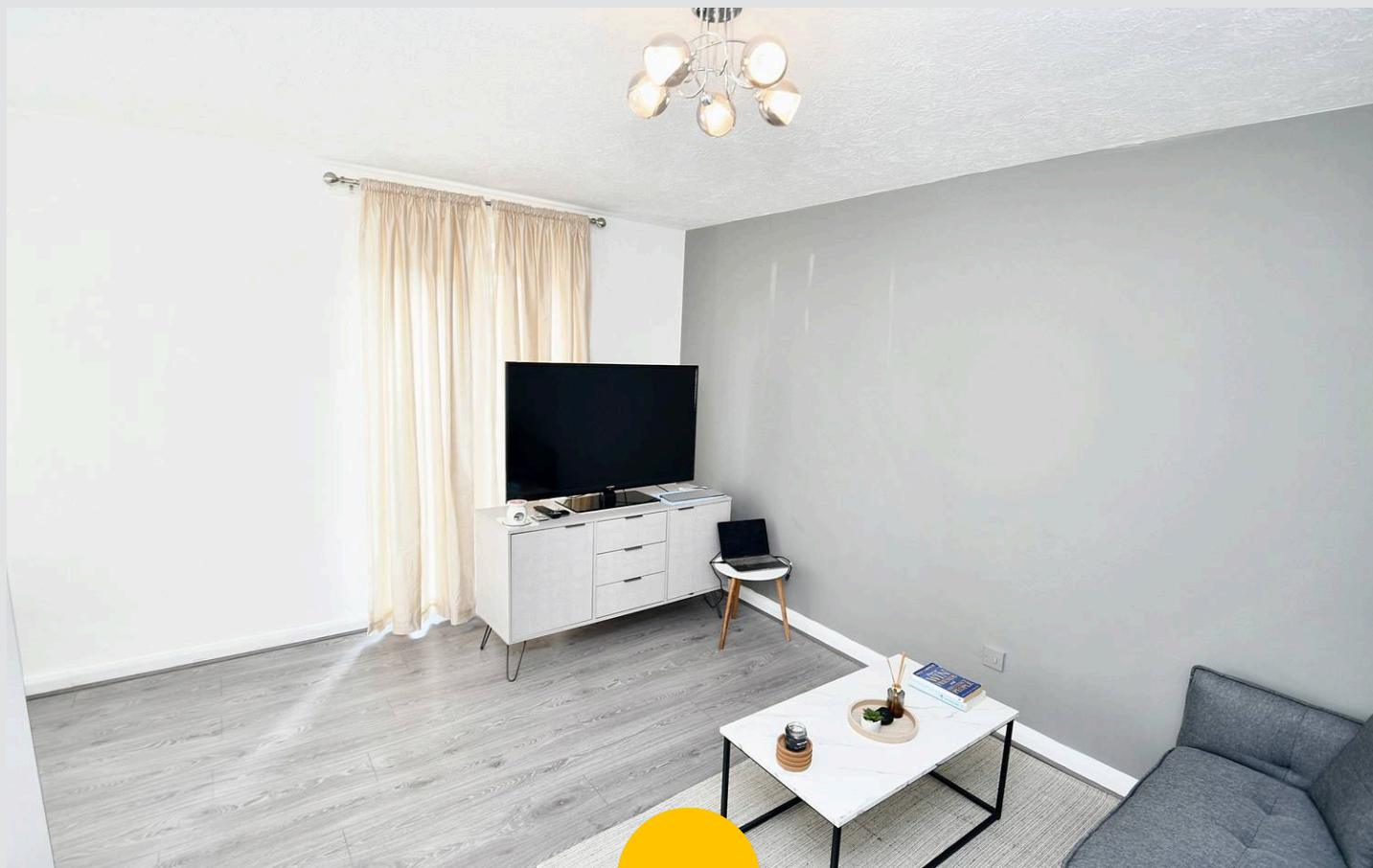
Velour Close

Salford

Council Tax band: A

Tenure: Leasehold

- TWO BEDROOM GROUND FLOOR APARTMENT
- Within walking distance to MANCHESTER CITY CENTRE!
- PARKING INCLUDED
- MODERN FITTED KITCHEN
- SPACIOUS LOUNGE AND DINING AREA
- TWO GENEROUSLY SIZED BEDROOMS AND AMPLE STORAGE SPACE
- MODERN FAMILY BATHROOM
- Well presented throughout
- Within easy access of excellent transport links into SALFORD QUAYS, MEDIA CITY AND MANCHESTER CITY CENTRE



Entrance Hallway

10' 0" x 6' 4" (3.05m x 1.94m)

Complete with a ceiling light point, two storage cupboards and laminate flooring.

Lounge

13' 6" x 9' 6" (4.11m x 2.89m)

Complete with a ceiling light point, patio doors and laminate flooring.

Dining Room

9' 1" x 6' 8" (2.76m x 2.02m)

Complete with a ceiling light point, double glazed window and laminate flooring.

Kitchen

7' 6" x 7' 11" (2.28m x 2.41m)

Featuring complementary wall and base units with space for a fridge freezer, washing machine and cooker.

Complete with a ceiling light point, double glazed window and tiled flooring.

Bedroom One

9' 11" x 10' 11" (3.01m x 3.33m)

Complete with a ceiling light point, double glazed window and electric heater. Fitted with laminate flooring.

Bedroom Two

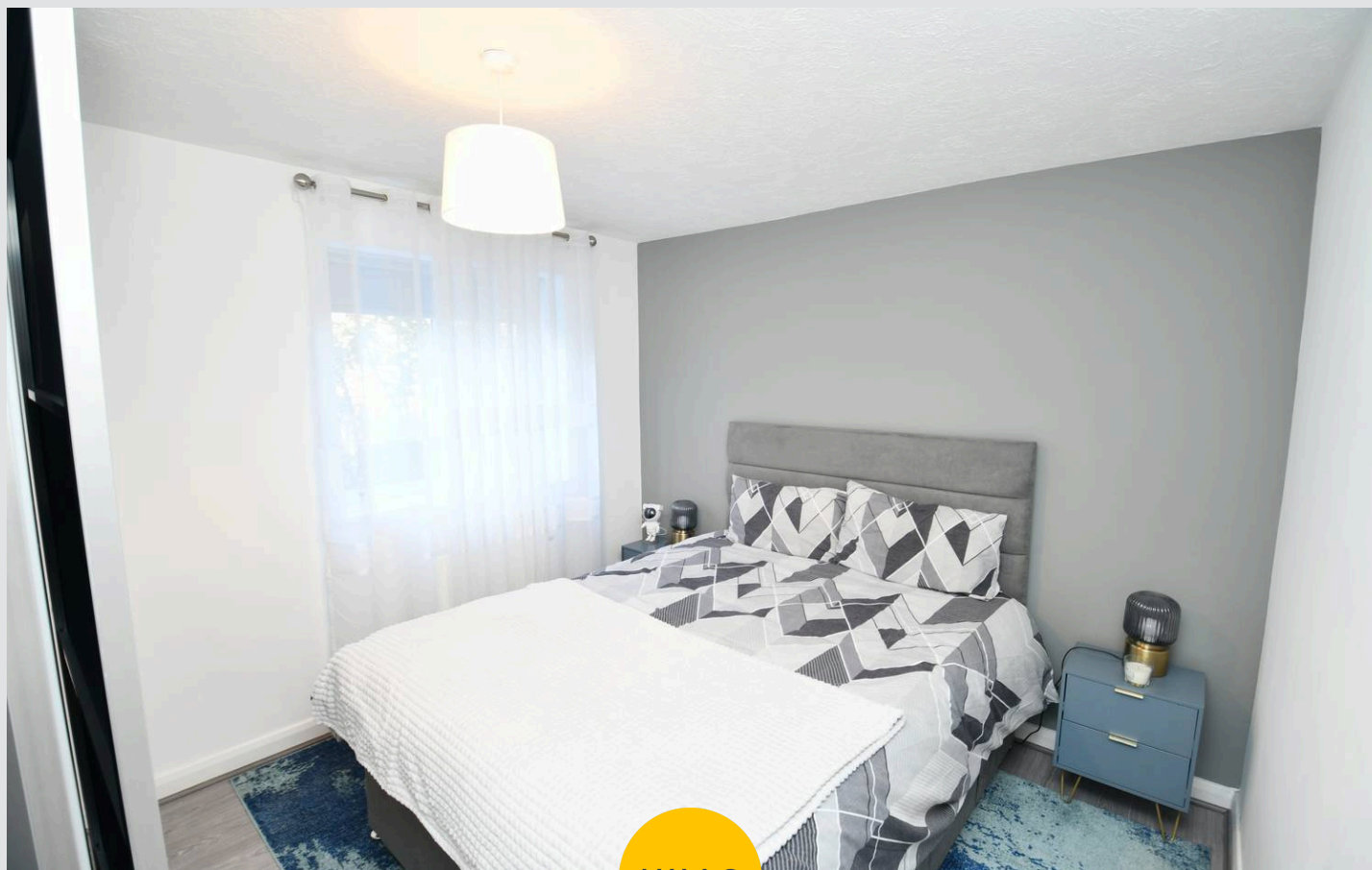
9' 11" x 10' 8" (3.01m x 3.25m)

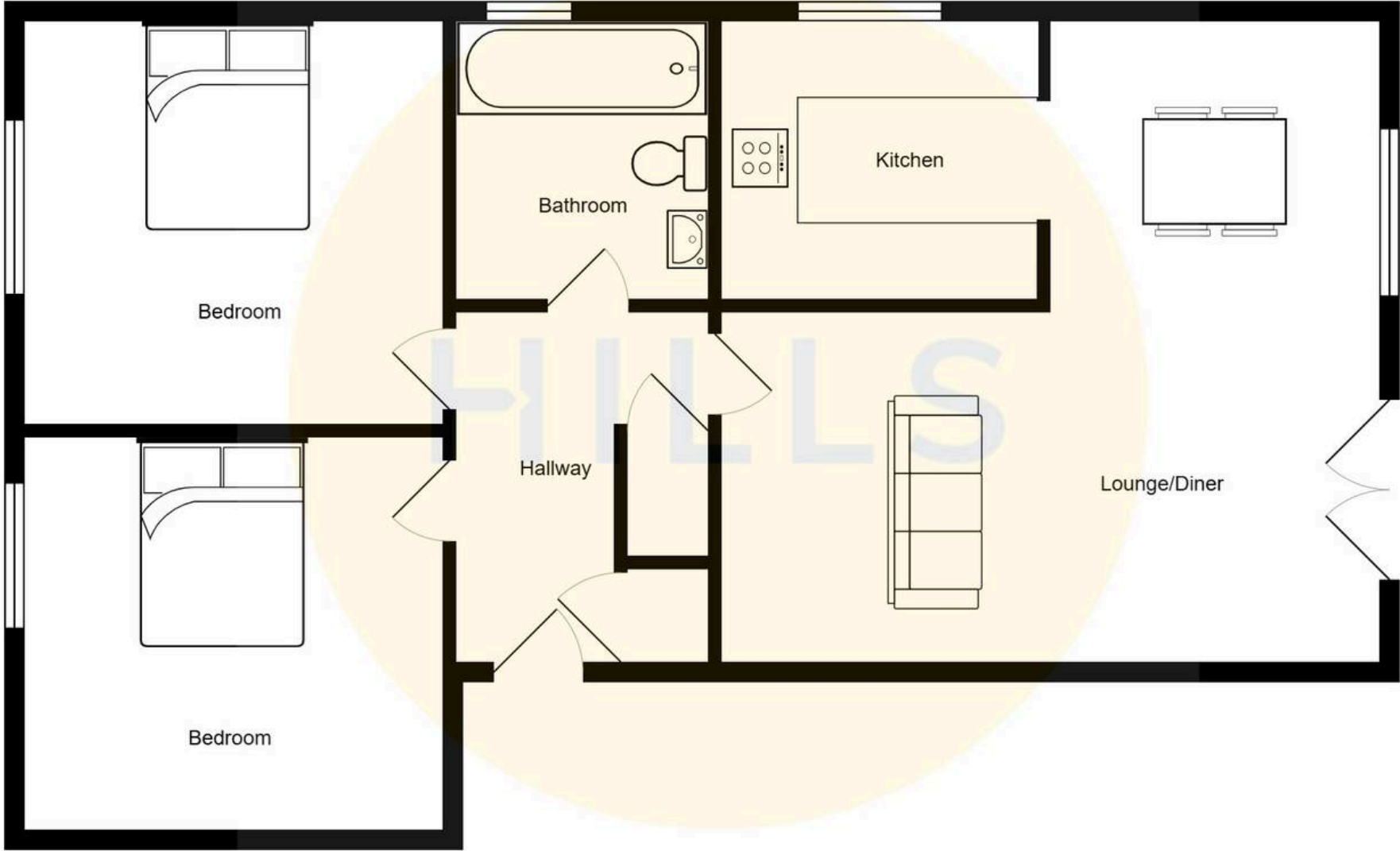
Complete with a ceiling light point, double glazed window and electric heater. Fitted with laminate flooring.

Bathroom

8' 0" x 5' 6" (2.43m x 1.68m)

Featuring a three piece suite including a bath with shower over, hand wash basin and W.C. Complete with a ceiling light point, double glazed window and extractor. Fitted with laminate flooring.







Hills | Salfords Estate Agent

Hills Residential, Sentinel House Albert Street – M30 0SS

0161 707 4900

sales@hills.agency

www.hills.agency/



THE PROPERTY MISDESCRIPTIONS ACT 1991 The Agent has not tested any apparatus, equipment, fixtures and fittings or services and so cannot verify that they are in working order or fit for the purpose. A Buyer is advised to obtain verification from their Solicitor or Surveyor. References to the Tenure of a Property are based on information supplied by the Seller. The Agent has not had sight of the title documents. A Buyer is advised to obtain verification from their Solicitor. You are advised to check the availability of this property before travelling any distance to view. Every effort and precaution has been made to ensure these particulars are correct and not misleading but their accuracy is not guaranteed nor do they form part of any contract. If there is any point which is of particular importance to you, please contact us and we will provide any information you require. This is advisable, particularly if you intend to travel some distance to view the property. The mention of any appliances and services within these details does not imply that they are in full and efficient working order. These particulars are in draft form awaiting Vendors confirmation of their accuracy. These details must therefore be taken as a guide only.