



Wortley Avenue, Salford

Salford



Offers Over £165,000

Wortley Avenue

Salford, Salford

Spacious ground floor flat near Salford Royal Hospital with off-road parking, garden, separate entrance, modern kitchen, conservatory, 2 bedrooms, and modern bathroom. Ideal first home or investment with great transport links. Contact us for a viewing!

Council Tax band: A

Tenure: Leasehold

- Beautifully Presented Throughout
- Spacious Two Bedroom Ground Floor Flat
- Driveway For Multiple Vehicles
- Large Rear Garden That Benefits From The Sun In the Afternoon
- Modern Fitted Kitchen Complete With An Island
- Close To Salford Royal Hospital And All Major Transport Links



HILLS



Lounge

15' 7" x 11' 2" (4.75m x 3.40m)

Complete with two ceiling light points, double glazed window and wall mounted radiator. Fitted with laminate flooring.

Kitchen

9' 9" x 10' 2" (2.98m x 3.10m)

Featuring complementary wall and base units with integral oven and hob, microwave and fridge freezer. Space for a washing machine. Complete with two ceiling light points, wall mounted radiator and laminate flooring.

Conservatory

15' 11" x 12' 6" (4.85m x 3.80m)

Complete with a ceiling light point, wall mounted radiator and laminate flooring.

Landing

Complete with a ceiling light point and carpet flooring.

Bedroom One

13' 5" x 10' 5" (4.09m x 3.17m)

Featuring fitted wardrobes. Complete with a ceiling light point, double glazed window and wall mounted radiator. Fitted with carpet flooring.

Bedroom Two

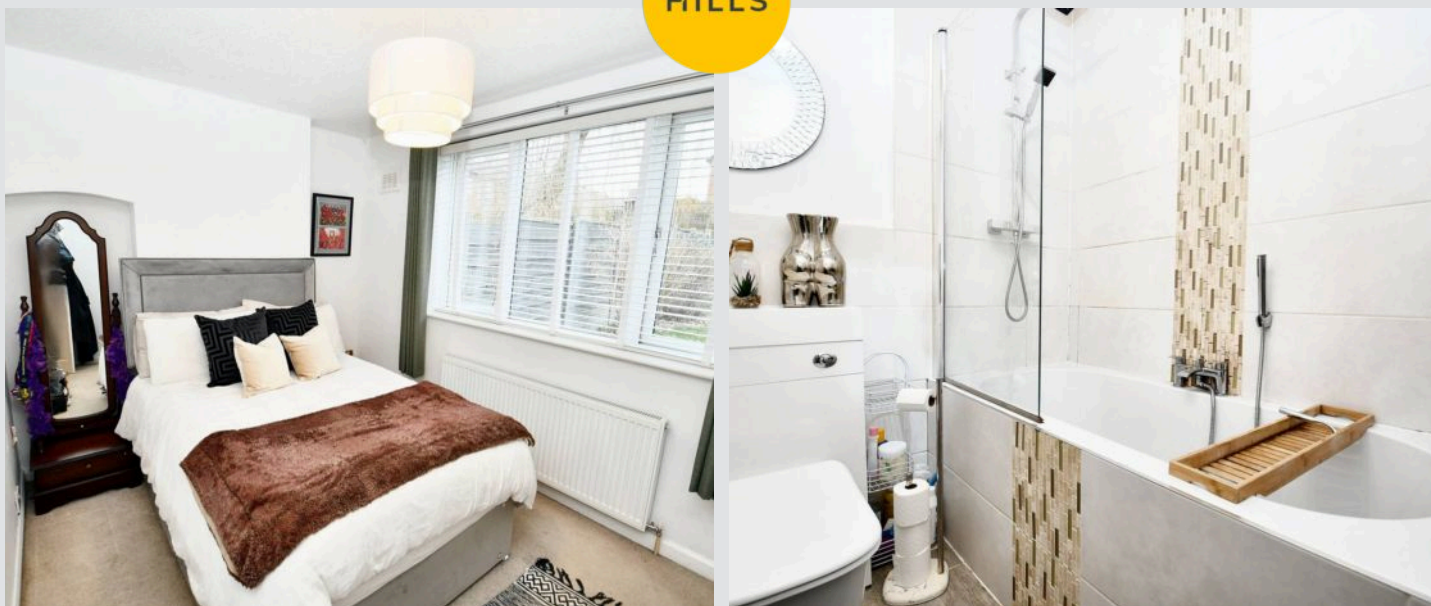
11' 1" x 8' 8" (3.38m x 2.65m)

Featuring fitted wardrobes. Complete with a ceiling light point, double glazed window and wall mounted radiator. Fitted with carpet flooring.

Bathroom

6' 10" x 7' 10" (2.08m x 2.38m)

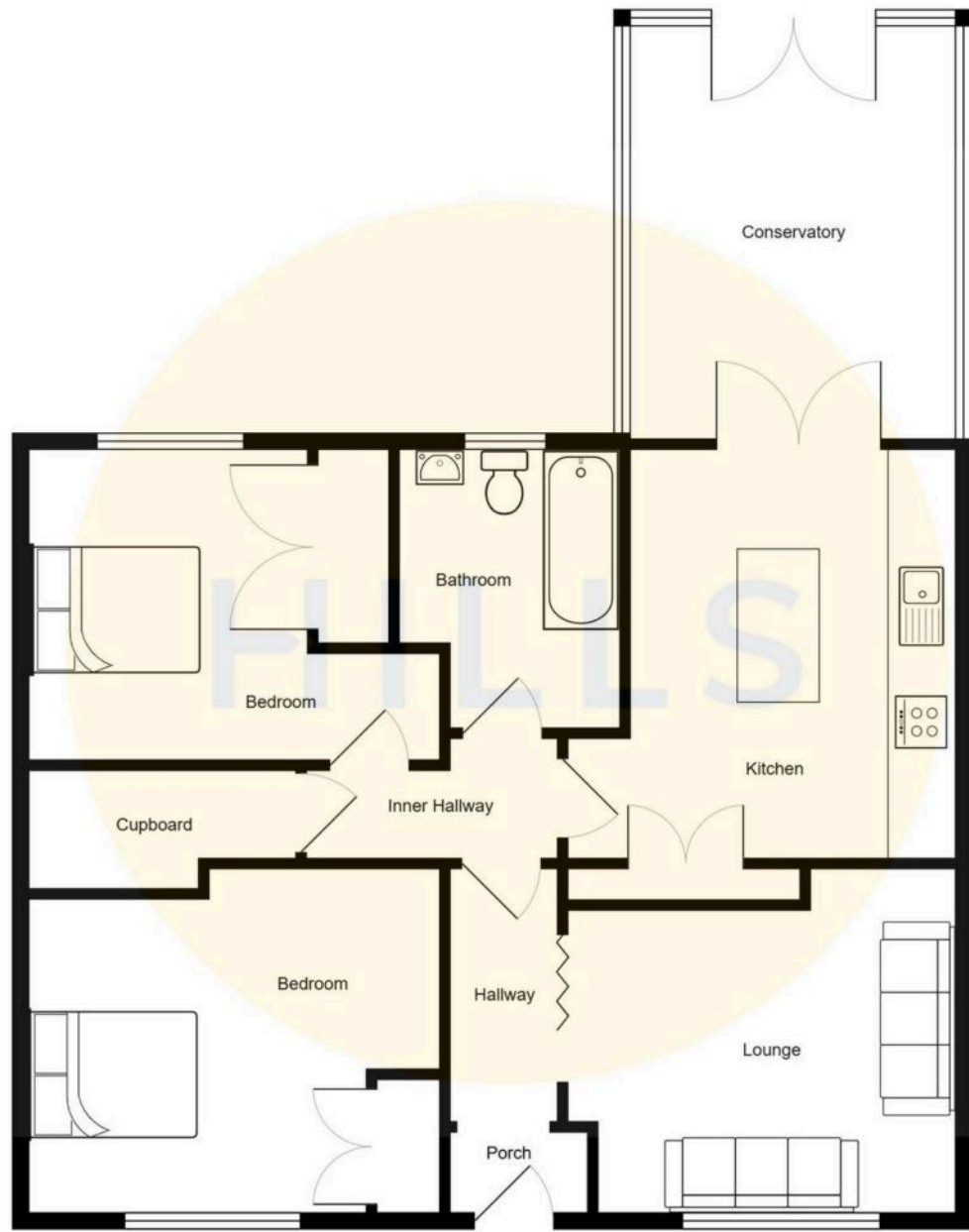
Featuring a three piece suite including a bath with shower over, hand wash basin and W.C. Complete with a ceiling light point, double glazed window and tiled flooring.





HILLS







Hills | Salfords Estate Agent

Hills Residential, Sentinel House Albert Street – M30 0SS

0161 707 4900

sales@hills.agency

www.hills.agency/



THE PROPERTY MISDESCRIPTIONS ACT 1991 The Agent has not tested any apparatus, equipment, fixtures and fittings or services and so cannot verify that they are in working order or fit for the purpose. A Buyer is advised to obtain verification from their Solicitor or Surveyor. References to the Tenure of a Property are based on information supplied by the Seller. The Agent has not had sight of the title documents. A Buyer is advised to obtain verification from their Solicitor. You are advised to check the availability of this property before travelling any distance to view. Every effort and precaution has been made to ensure these particulars are correct and not misleading but their accuracy is not guaranteed nor do they form part of any contract. If there is any point which is of particular importance to you, please contact us and we will provide any information you require. This is advisable, particularly if you intend to travel some distance to view the property. The mention of any appliances and services within these details does not imply that they are in full and efficient working order. These particulars are in draft form awaiting Vendors confirmation of their accuracy. These details must therefore be taken as a guide only.