



Adelphi Wharf, Adelphi Street

Salford



£260,000

Adelphi Wharf

Salford

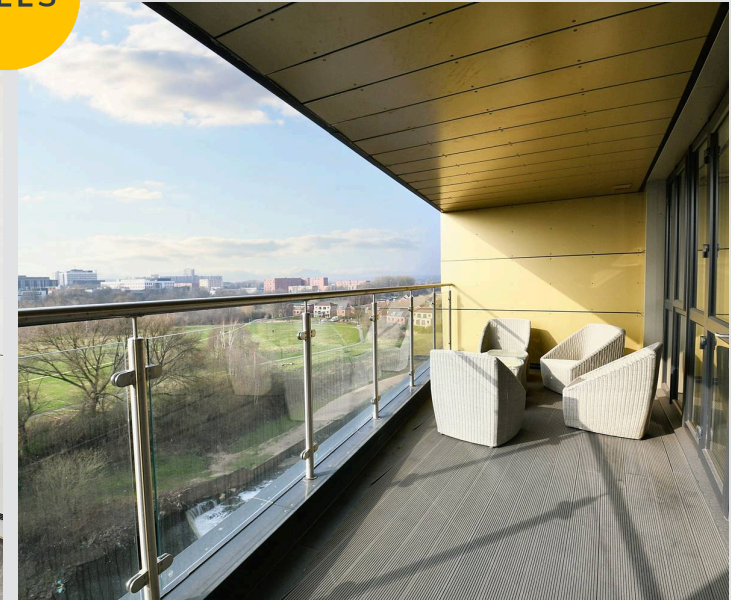
Situated WITHIN WALKING DISTANCE OF MANCHESTER CITY CENTRE and the UNIVERSITY OF SALFORD is this TWO BEDROOM MODERN APARTMENT situated on the fifth floor and benefitting from LIFT ACCESS.
Council Tax band: C

Tenure: Leasehold

- MODERN TWO DOUBLE BEDROOM APARTMENT
- Coming to the market CHAIN FREE!
- Within walking distance to MANCHESTER CITY CENTRE
- Situated on the fifth floor and benefitting from LIFT ACCESS
- SECURE PARKING INCLUDED
- Lounge and open plan kitchen/dining room
- Well presented throughout
- EN-SUITE TO MASTER BEDROOM AND MODERN FAMILY BATHROOM
- Within easy access of excellent transport links into Salford Quays and Media City



HILLS



Entrance Hallway

10' 2" x 8' 8" (3.09m x 2.63m)

Complete with a ceiling light point, intercom and luxury vinyl flooring.

Lounge

16' 4" x 13' 4" (4.99m x 4.06m)

Complete with a ceiling light point, double glazed window and electric heater. Fitted with luxury vinyl flooring.

Kitchen

6' 1" x 10' 5" (1.86m x 3.17m)

Featuring complementary wall and base units with integral oven, fridge freezer and dishwasher. Complete with ceiling spotlights and luxury vinyl flooring.

Balcony

Decked balcony.

Bedroom One

9' 0" x 14' 2" (2.75m x 4.33m)

Complete with a ceiling light point, double glazed window and electric heater. Fitted with luxury vinyl flooring.

En suite

8' 10" x 5' 5" (2.68m x 1.65m)

Featuring a three piece suite including a shower, hand wash basin and W.C. Complete with a ceiling light point, towel heater and tiled flooring.

Bedroom Two

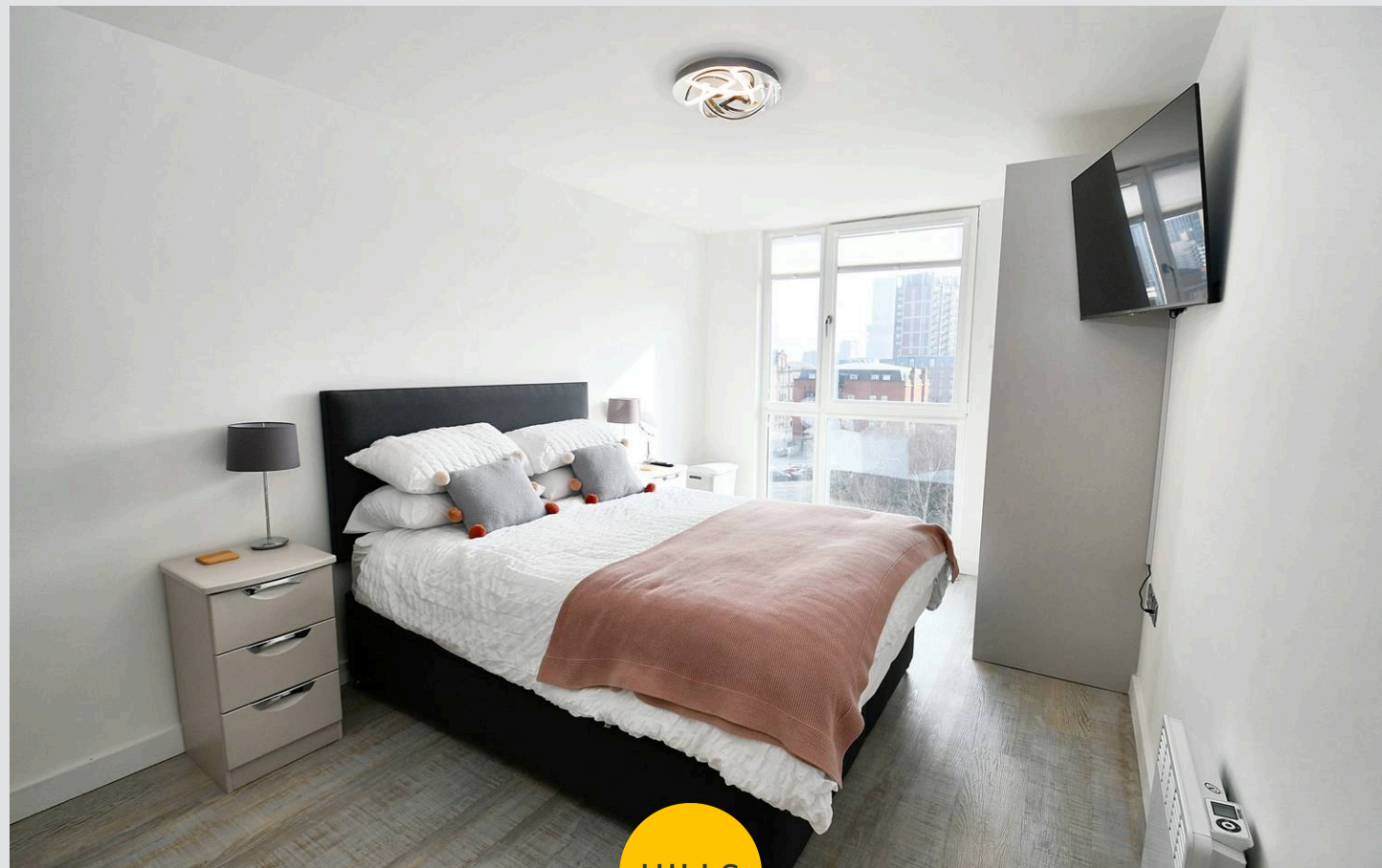
12' 0" x 9' 3" (3.65m x 2.83m)

Complete with a ceiling light point, double glazed window and electric heater. Fitted with luxury vinyl flooring.

Bathroom

7' 9" x 6' 4" (2.35m x 1.92m)

Featuring a three piece suite including bath with shower over, hand wash basin and W.C. Complete with a ceiling light point, towel heater and tiled flooring.





HILLS







Hills | Salfords Estate Agent

Hills Residential, Sentinel House Albert Street - M30 0SS

0161 707 4900

sales@hills.agency

www.hills.agency/



THE PROPERTY MISDESCRIPTIONS ACT 1991 The Agent has not tested any apparatus, equipment, fixtures and fittings or services and so cannot verify that they are in working order or fit for the purpose. A Buyer is advised to obtain verification from their Solicitor or Surveyor. References to the Tenure of a Property are based on information supplied by the Seller. The Agent has not had sight of the title documents. A Buyer is advised to obtain verification from their Solicitor. You are advised to check the availability of this property before travelling any distance to view. Every effort and precaution has been made to ensure these particulars are correct and not misleading but their accuracy is not guaranteed nor do they form part of any contract. If there is any point which is of particular importance to you, please contact us and we will provide any information you require. This is advisable, particularly if you intend to travel some distance to view the property. The mention of any appliances and services within these details does not imply that they are in full and efficient working order. These particulars are in draft form awaiting Vendors confirmation of their accuracy. These details must therefore be taken as a guide only.