

**Alder Street**

Salford



In Excess of **£230,000**

# Alder Street

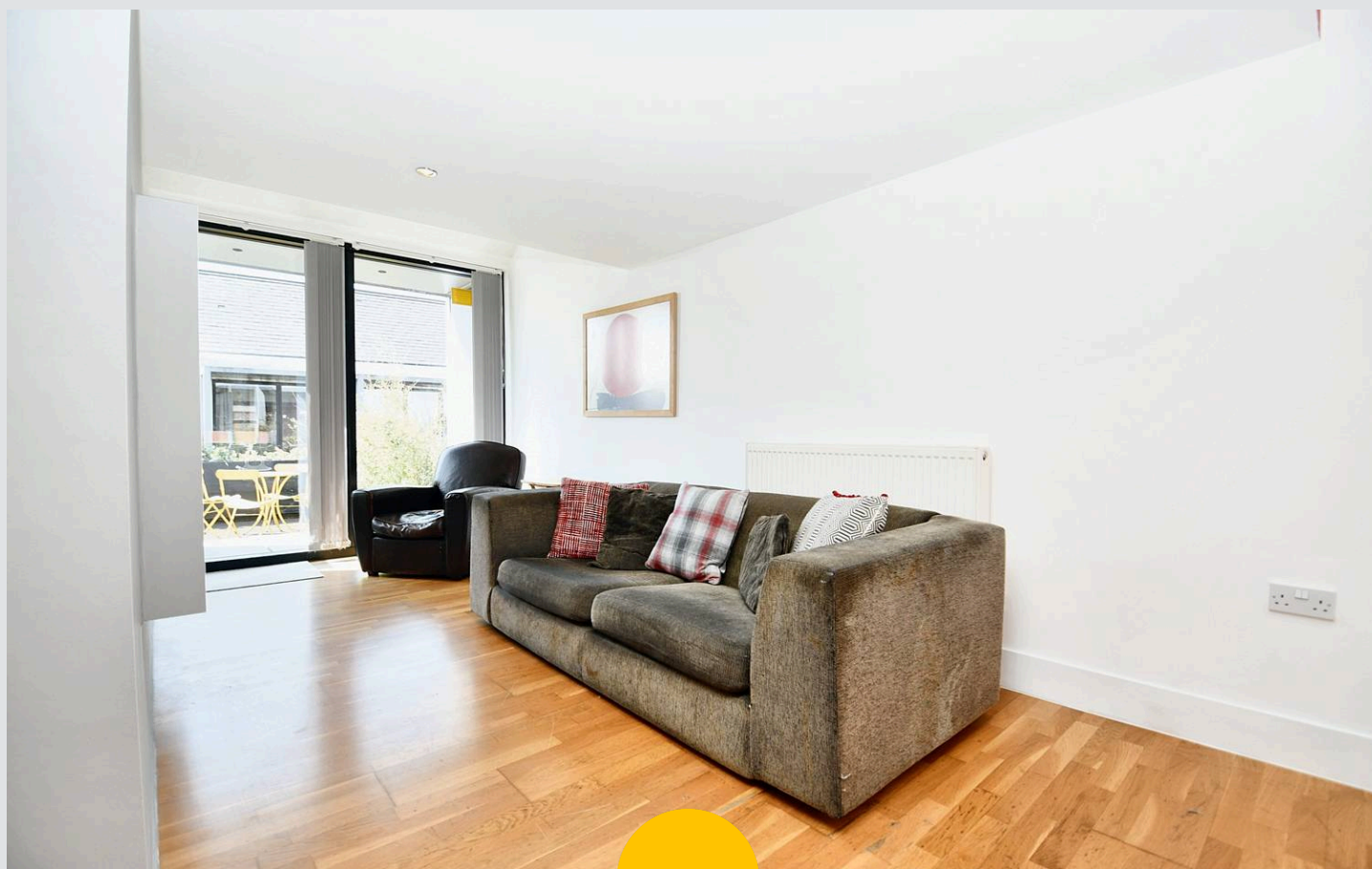
Salford

**\*\*RECENTLY REDECORATED\*\*** A stunning, three bedroom property located on the popular 'Chimney Pot Park' Development! Within walking distance of Salford Quays & Media City!

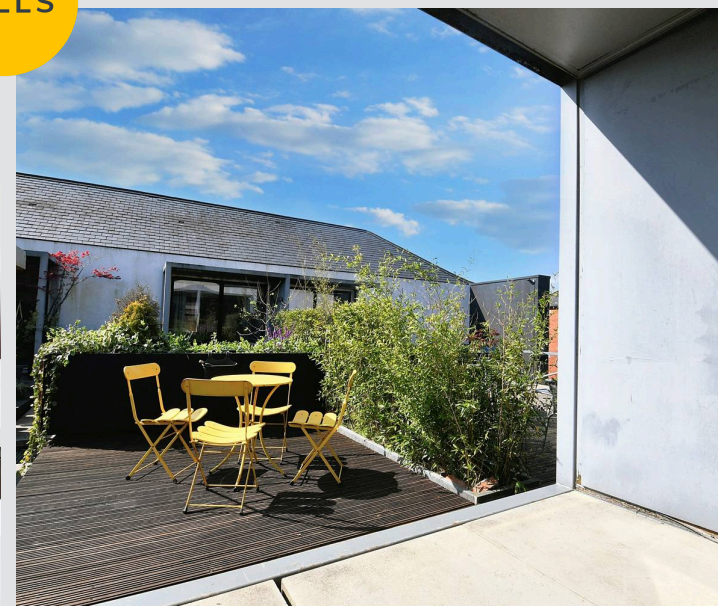
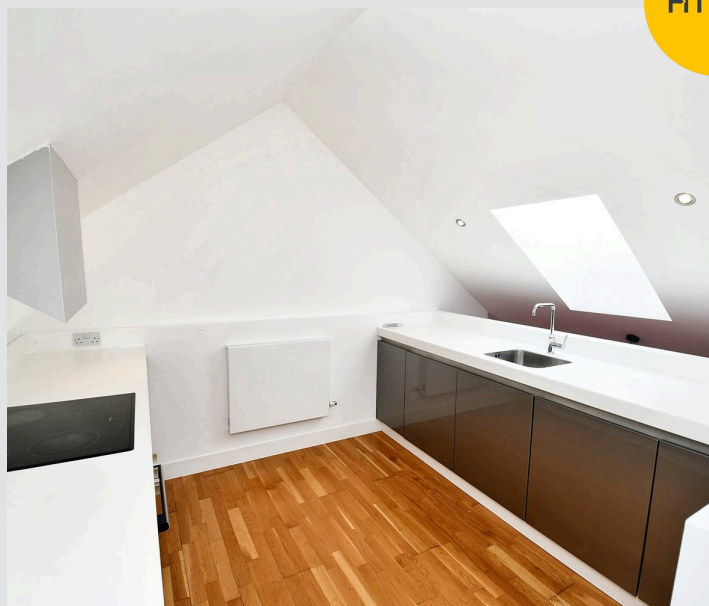
Council Tax band: TBD

Tenure: Leasehold

- Stunning Three Bedroom Terraced Property
- Located on the Popular 'Chimney Pot Park' Development
- Within Walking Distance of Salford Quays & Media City
- Three Double Bedrooms
- Modern Three-Piece Bathroom
- Large Lounge Diner with Sliding Doors to the Rear
- Garden Terrace to the Rear
- Close to Local Parks and Amenities
- Near Langworthy Tram Stop, which Provides Direct Access into Manchester City Centre
- Viewing is Highly Recommended!



HILLS



**Entrance Hallway**

**Bedroom Two**

12' 1" x 8' 2" (3.69m x 2.50m)

**Bedroom Three**

8' 2" x 7' 6" (2.50m x 2.28m)

**Bathroom**

5' 0" x 5' 11" (1.52m x 1.81m)

**Bedroom One**

11' 11" x 10' 0" (3.62m x 3.04m)

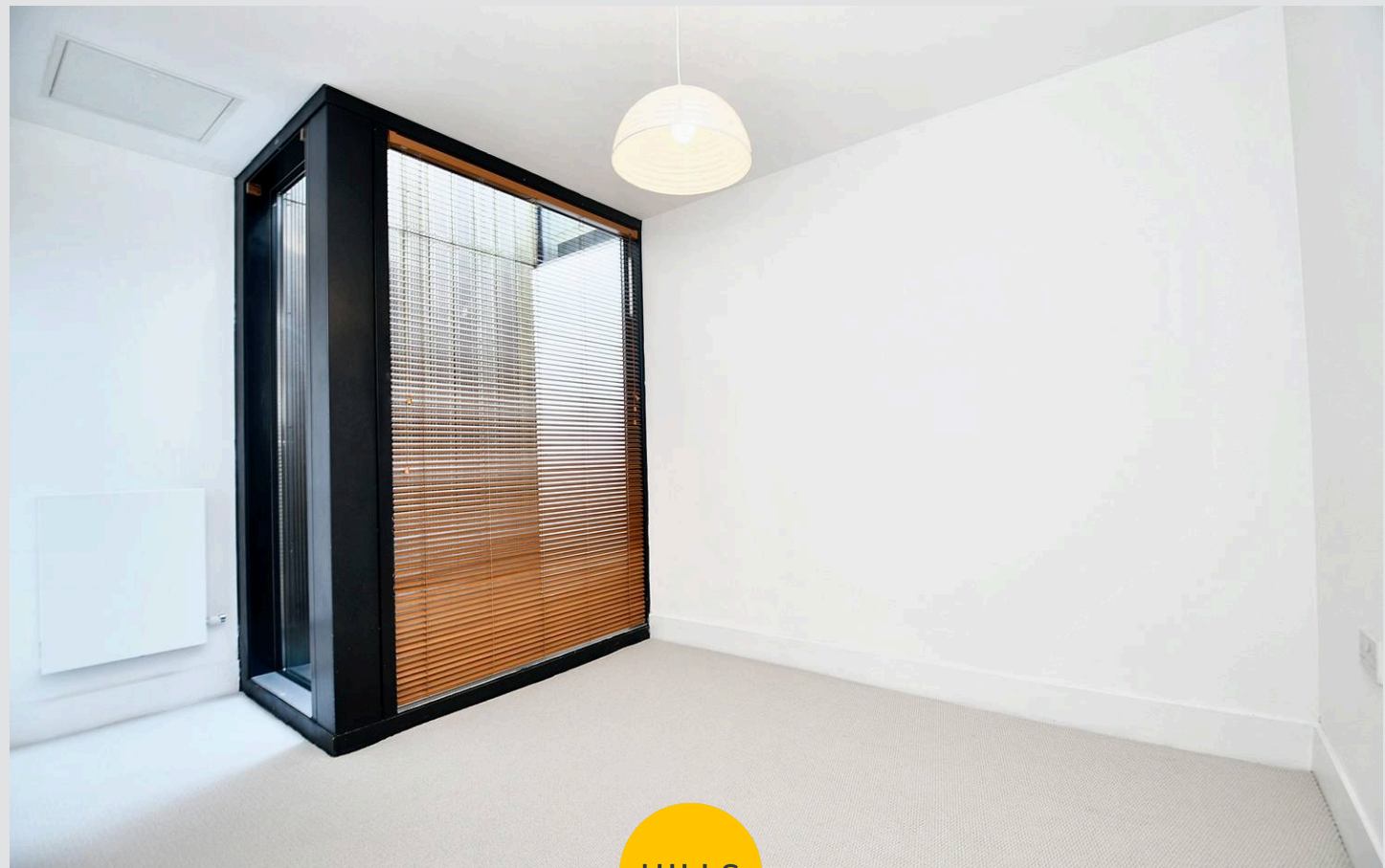
**Lounge Diner**

22' 4" x 12' 5" (6.80m x 3.78m)

**Kitchen**

12' 1" x 10' 1" (3.69m x 3.08m)

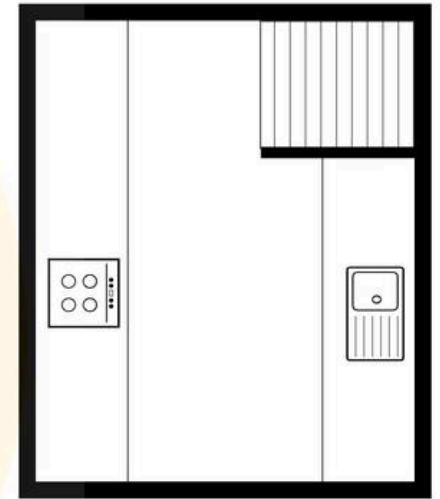
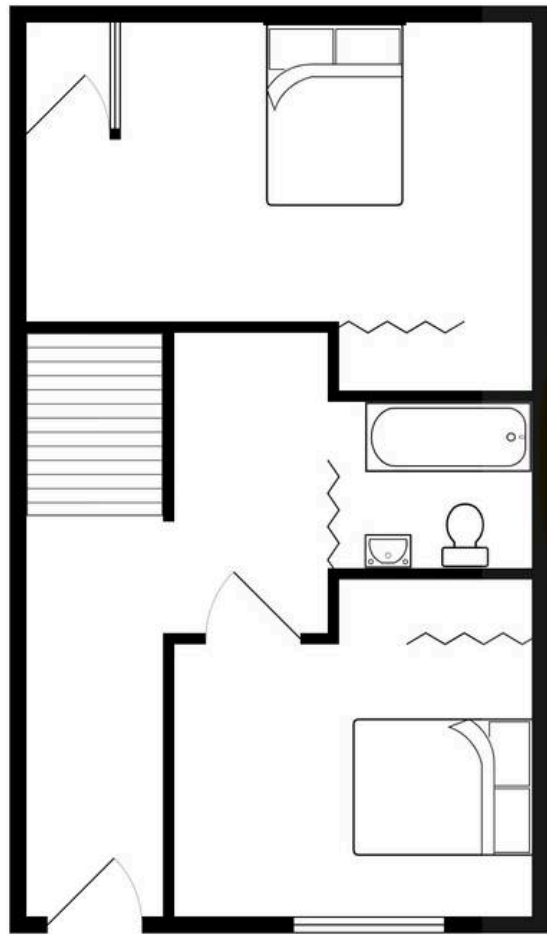
**Garden Terrace**





HILLS







## Hills | Salfords Estate Agent

Hills Residential, Sentinel House Albert Street – M30 0SS

0161 707 4900

[sales@hills.agency](mailto:sales@hills.agency)

[www.hills.agency/](http://www.hills.agency/)



THE PROPERTY MISDESCRIPTIONS ACT 1991 The Agent has not tested any apparatus, equipment, fixtures and fittings or services and so cannot verify that they are in working order or fit for the purpose. A Buyer is advised to obtain verification from their Solicitor or Surveyor. References to the Tenure of a Property are based on information supplied by the Seller. The Agent has not had sight of the title documents. A Buyer is advised to obtain verification from their Solicitor. You are advised to check the availability of this property before travelling any distance to view. Every effort and precaution has been made to ensure these particulars are correct and not misleading but their accuracy is not guaranteed nor do they form part of any contract. If there is any point which is of particular importance to you, please contact us and we will provide any information you require. This is advisable, particularly if you intend to travel some distance to view the property. The mention of any appliances and services within these details does not imply that they are in full and efficient working order. These particulars are in draft form awaiting Vendors confirmation of their accuracy. These details must therefore be taken as a guide only.