



Boddington Road, Eccles

Manchester



£240,000

Boddington Road

Eccles, Manchester

Council Tax band: A

- Fantastic FOUR BEDROOM SEMI DETACHED HOME!
- CONTEMPORARY FITTED KITCHEN AND DINING SPACE
- FOUR WELL PROPORTIONED BEDROOMS
- WELL PRESENTED THROUGHOUT
- LARGE LOW MAINTENANCE GARDEN WITH LAID TO LAWN GRASS AND PATIO AREA
- LARGE LIVING SPACE
- PERFECT FAMILY HOME
- BATHROOM AND SEPERATE W.C. UPSTAIRS
- EXCELLENT LOCAL AMENITIES NEARBY, INCLUDING SHOPS, PARKS AND SCHOOLS
- FANTASTIC TRANSPORT LINKS



HILLS



Entrance Hallway

Entered via a uPVC front door. Complete with a ceiling light point, wall mounted radiator and laminate flooring.

Lounge

17' 10" x 12' 4" (5.43m x 3.75m)

Complete with a ceiling light point, double glazed window, wall mounted radiator and laminate flooring.

Kitchen

13' 6" x 9' 1" (4.12m x 2.78m)

Featuring complementary wall and base units with space for a fridge freezer, washing machine, dryer, cooker and extractor. Complete with a ceiling light point, uPVC rear door and lino flooring.

Dining Room

9' 7" x 10' 7" (2.91m x 3.23m)

Complete with a ceiling light point, patio door, wall mounted radiator and lino flooring.



HILLS



Bedroom One

9' 2" x 15' 0" (2.79m x 4.58m)

Complete with a ceiling light point, double glazed window, wall mounted radiator and carpet flooring.

Bedroom Two

12' 2" x 9' 0" (3.72m x 2.75m)

Complete with a ceiling light point, double glazed window, wall mounted radiator and carpet flooring.

Bedroom Three

8' 10" x 7' 9" (2.69m x 2.35m)

Complete with a ceiling light point, double glazed window, wall mounted radiator and carpet flooring.

Bedroom Four

9' 7" x 9' 5" (2.93m x 2.86m)

Complete with a ceiling light point, double glazed window, wall mounted radiator and carpet flooring.

W.C.

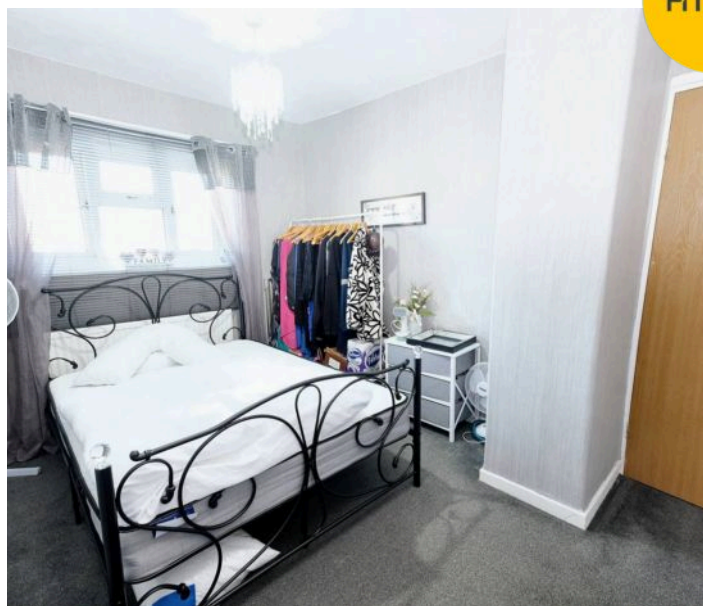
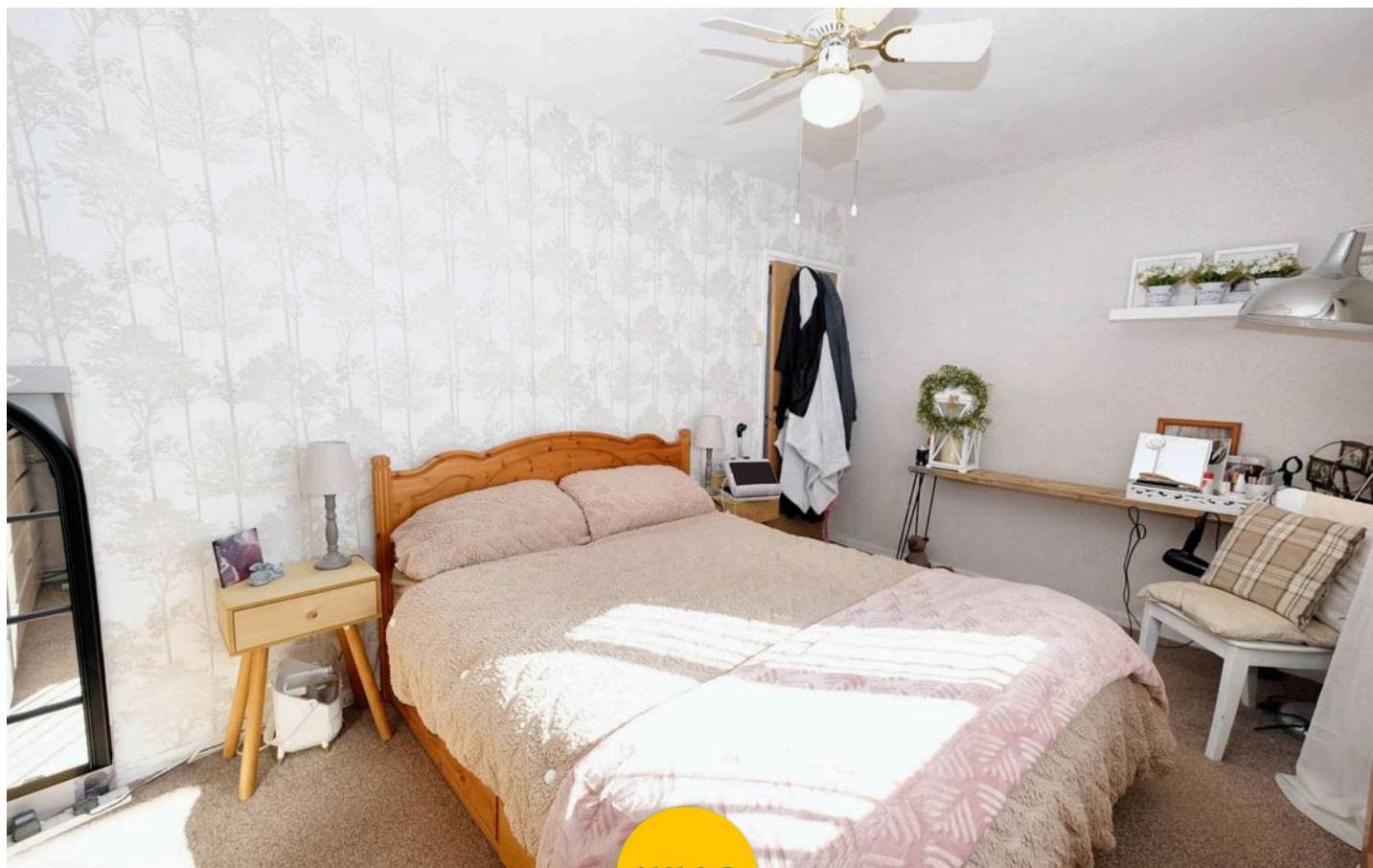
5' 3" x 2' 6" (1.60m x 0.77m)

Featuring a W.C. Complete with a ceiling light point, double glazed window and lino flooring.

Bathroom

4' 9" x 7' 5" (1.45m x 2.25m)

Featuring a three piece suite including a bath with shower over, hand wash basin and W.C. Complete with a ceiling light point, double glazed window and lino flooring.





HILLS







Hills | Salfords Estate Agent

Hills Residential, Sentinel House Albert Street – M30 0SS

0161 707 4900

sales@hills.agency

www.hills.agency/



THE PROPERTY MISDESCRIPTIONS ACT 1991 The Agent has not tested any apparatus, equipment, fixtures and fittings or services and so cannot verify that they are in working order or fit for the purpose. A Buyer is advised to obtain verification from their Solicitor or Surveyor. References to the Tenure of a Property are based on information supplied by the Seller. The Agent has not had sight of the title documents. A Buyer is advised to obtain verification from their Solicitor. You are advised to check the availability of this property before travelling any distance to view. Every effort and precaution has been made to ensure these particulars are correct and not misleading but their accuracy is not guaranteed nor do they form part of any contract. If there is any point which is of particular importance to you, please contact us and we will provide any information you require. This is advisable, particularly if you intend to travel some distance to view the property. The mention of any appliances and services within these details does not imply that they are in full and efficient working order. These particulars are in draft form awaiting Vendors confirmation of their accuracy. These details must therefore be taken as a guide only.