

Claremont Road

Salford



In Excess of £475,000

Claremont Road

Salford

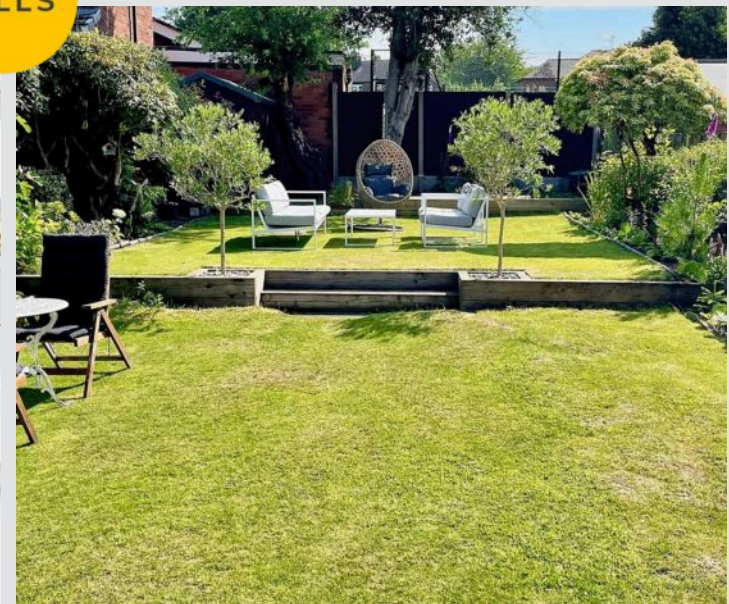
A PRESTIGIOUS THREE BEDROOM SEMI-DETACHED FAMILY HOME COMING TO THE MARKET CHAIN FREE! THE PROPERTY IS SITUATED OVER FOUR FLOORS AND IS IMMACULATEDLY PRESENTED THROUGHTOUT!

Council Tax band: D

- PRESTIGIOUS THREE BEDROOM, SEMI-DETACHED FAMILY HOME LOCATED ON A POPULAR ROAD
- COMING TO THE MARKET CHAIN FREE!
- SITUATED OVER FOUR FLOORS
- BOASTS A CELLAR WITH FOUR CHAMBERS
- CONVERTED LOFT SPACE USED AS A WORKSHOP
- CONTEMPORARY EXTENDED FITTED KITCHEN DINER
- SPACIOUS FOUR-PIECE FAMILY BATHROOM
- THREE DOUBLE BEDROOMS
- LARGE DRIVEWAY TO THE FRONT PROVIDING OFF-ROAD PARKING FOR MULTIPLE CARS AND IMMACULATEDLY PRESENTED REAR GARDEN
- JUST A STONES THROW FROM BUILE HILL PARK AND WITHIN EASY ACCESS OF SALFORD ROYAL HOSPITAL AND LOCAL SCHOOLING



HILLS



Entrance Hallway

15' 7" x 8' 8" (4.75m x 2.64m)

Entered via a wooden front door. Complete with a ceiling light point, single glazed window, wall mounted radiator and wooden floorboards.

Lounge

12' 2" x 17' 6" (3.71m x 5.33m)

Featuring a log burner. Complete with a ceiling light point, double glazed bay window and wall mounted radiator. Fitted with wooden floorboards.

Dining Room

15' 3" x 12' 1" (4.66m x 3.69m)

Complete with a ceiling light point, single glazed window and wall mounted radiator. Fitted with a wooden door and wooden floorboards.

Kitchen

19' 0" x 9' 0" (5.78m x 2.74m)

Featuring complementary wall and base units with space for a fridge freezer, dishwasher, washing machine, oven, hob and extractor. Complete with ceiling spotlights, two double glazed windows and wall mounted radiator. Fitted with a wooden door and tiled flooring.

Bathroom

9' 9" x 8' 8" (2.97m x 2.63m)

Featuring a four piece suite including a bath, shower, hand wash basin and W.C. Complete with a ceiling light point, extractor, two double glazed windows and heated towel rail. Fitted with tiled flooring.

Bedroom One

12' 2" x 11' 3" (3.71m x 3.42m)

Complete with a ceiling light point, double glazed bay window and wall mounted radiator. Fitted with wooden floorboards.



Bedroom Two

12' 6" x 13' 4" (3.82m x 4.06m)

Complete with a ceiling light point, double glazed window and wall mounted radiator. Fitted with wooden floorboards.

Bedroom Three

9' 8" x 8' 8" (2.95m x 2.65m)

Complete with a ceiling light point, double glazed window and wall mounted radiator. Fitted with wooden floorboards.

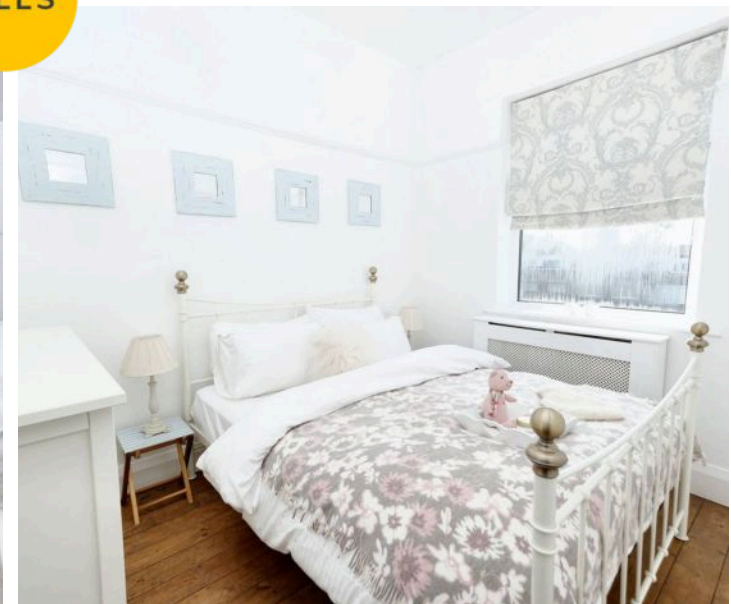
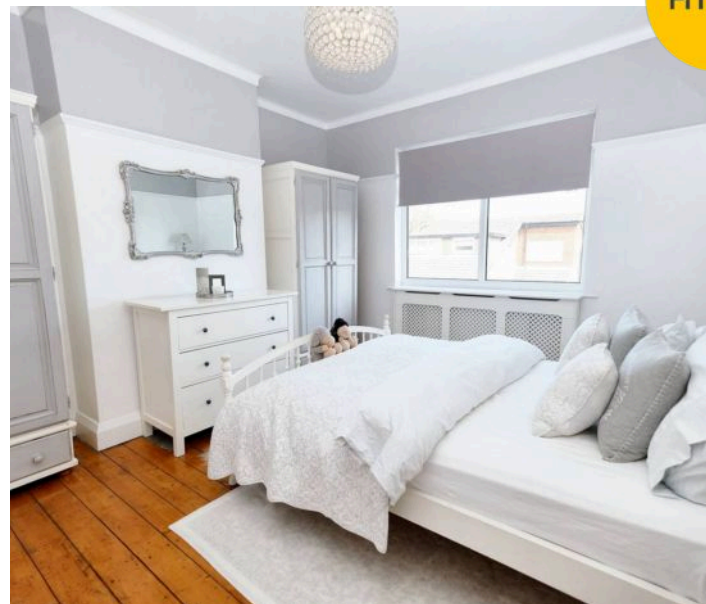
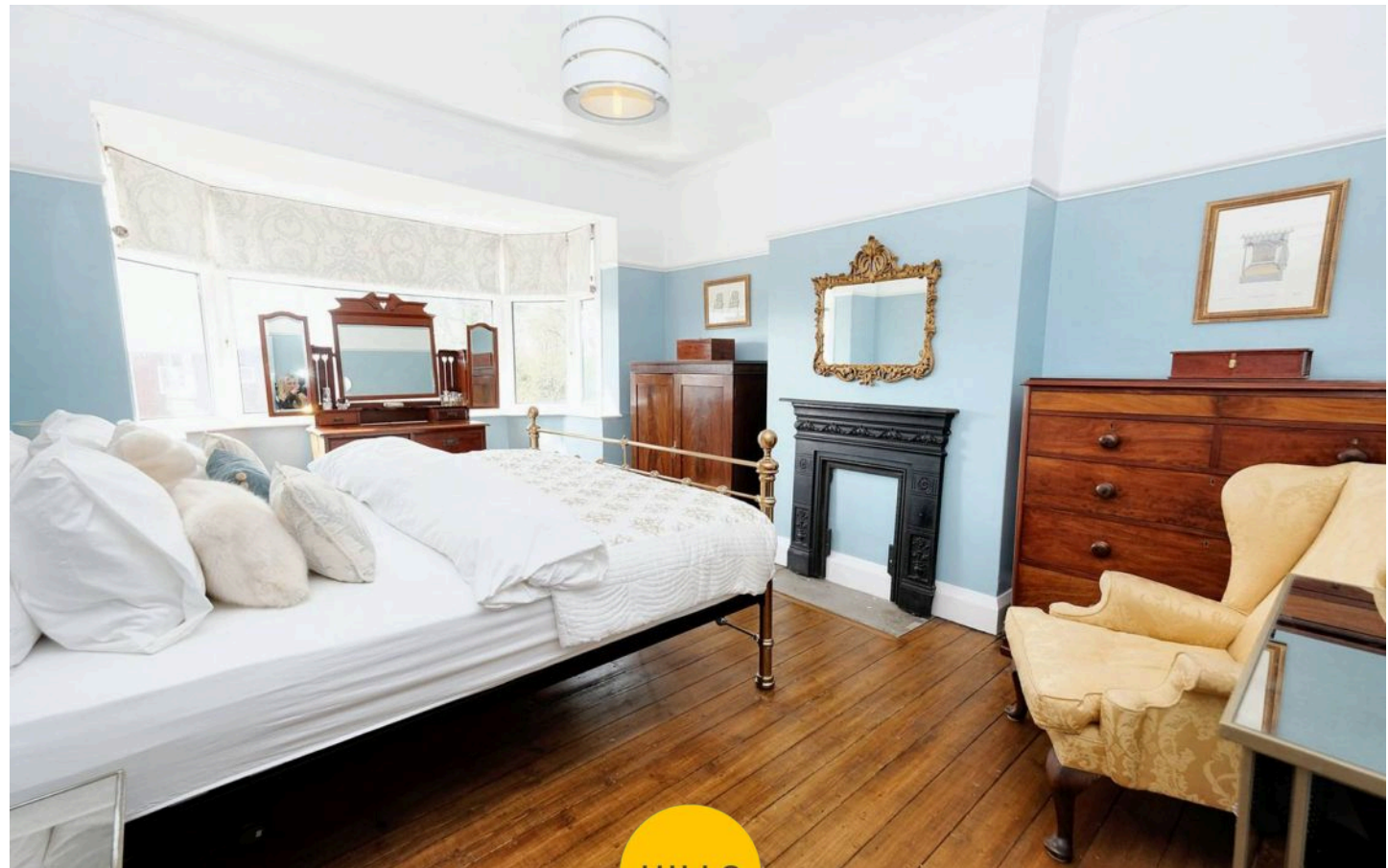
Loft Room

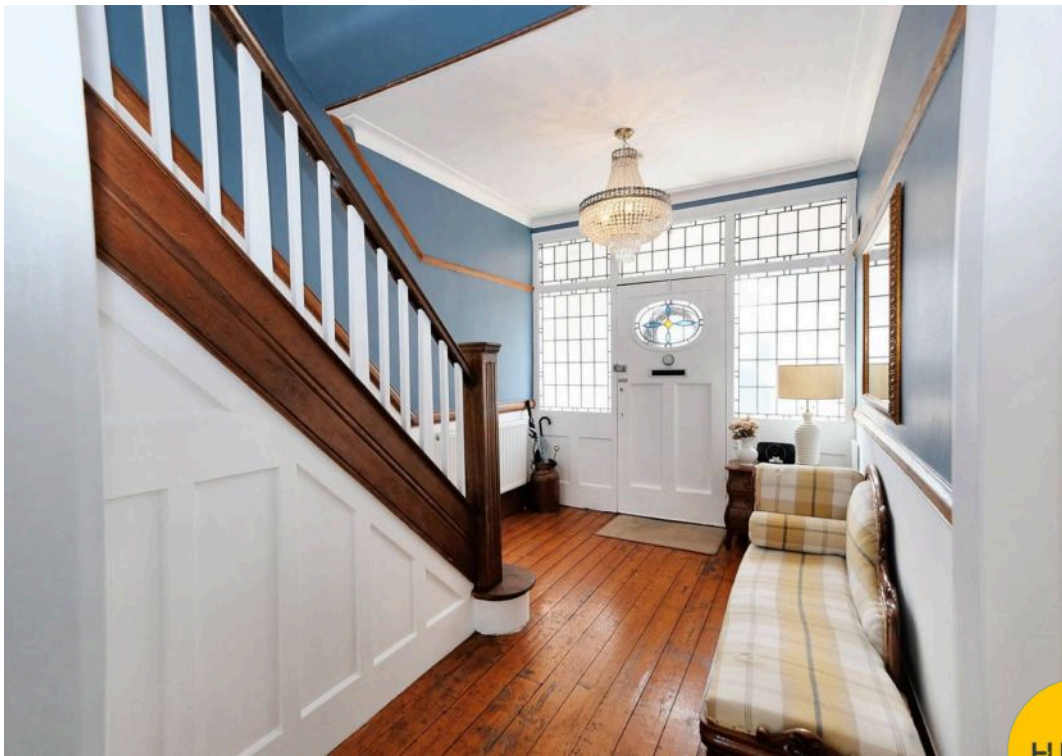
20' 2" x 18' 10" (6.14m x 5.75m)

Complete with a ceiling light point, Velux window and boarded flooring.

Cellar

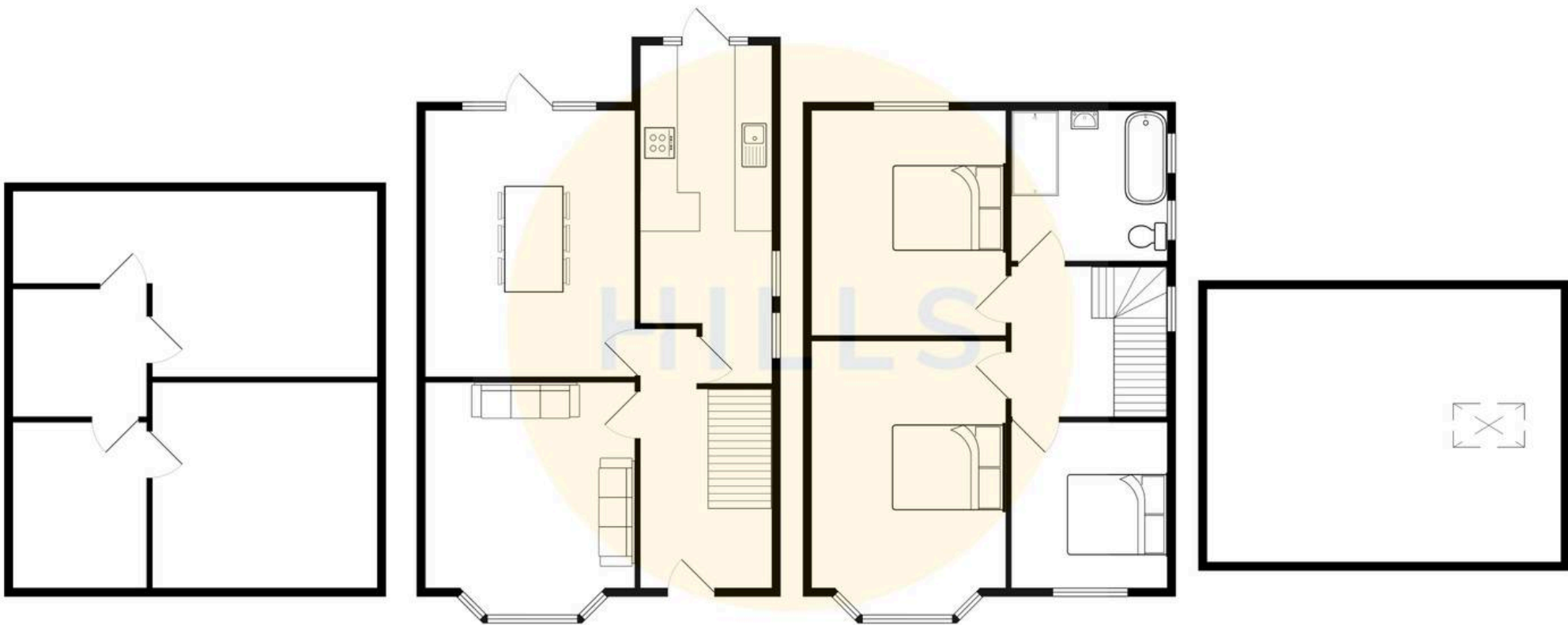
Room One (3.66m x 5.15m) Complete with ceiling spotlights, double glazed window and wooden flooring. Room Two (3.63m x 4.28m) Complete with ceiling spotlights and wooden flooring. Room Three / Utility Space (2.57m x 2.98m) Complete with a ceiling light point and brick walls. Room Four (2.46m x 1.55m) Complete with a ceiling light point.





HILLS







Hills | Salfords Estate Agent

Hills Residential, Sentinel House Albert Street – M30 0SS

0161 707 4900

sales@hills.agency

www.hills.agency/



THE PROPERTY MISDESCRIPTIONS ACT 1991 The Agent has not tested any apparatus, equipment, fixtures and fittings or services and so cannot verify that they are in working order or fit for the purpose. A Buyer is advised to obtain verification from their Solicitor or Surveyor. References to the Tenure of a Property are based on information supplied by the Seller. The Agent has not had sight of the title documents. A Buyer is advised to obtain verification from their Solicitor. You are advised to check the availability of this property before travelling any distance to view. Every effort and precaution has been made to ensure these particulars are correct and not misleading but their accuracy is not guaranteed nor do they form part of any contract. If there is any point which is of particular importance to you, please contact us and we will provide any information you require. This is advisable, particularly if you intend to travel some distance to view the property. The mention of any appliances and services within these details does not imply that they are in full and efficient working order. These particulars are in draft form awaiting Vendors confirmation of their accuracy. These details must therefore be taken as a guide only.