

Cromwell Road, Eccles

Manchester



In Excess of £170,000

Cromwell Road

Eccles, Manchester

Take a look at this FANTASTIC TWO BEDROOM TERRACED HOME! The property benefits from a STACIOUS AND MODERN FITTED KITCHEN, LIVING ROOM, TWO DOUBLE BEDROOMS AND A MODERN FITTED BATHROOM!

Council Tax band: A

Tenure: Leasehold

- TWO DOUBLE BEDROOM TERRACED PROPERTY
- WITHIN WALKING DISTANCE TO MONTON VILLAGE!
- MODERN FITTED KITCHEN AND BATHROOM
- SPACIOUS THROUGHOUT
- LOW MAINTENANCE YARD TO THE REAR
- GAS CENTRAL HEATED AND DOUBLE GLAZED THROUGHOUT
- PERFECT FOR FIRST TIME BUYERS
- PATRICROFT TRAIN STATION IS APPROX 5 MINUTES WALK AND PROVIDES DIRECT ACCESS INTO MANCHESTER CITY CENTRE!
- WITHIN EASY ACCESS OF EXCELLENT TRANSPORT LINKS INTO SALFORD QUAYS, MEDIA CITY AND MANCHESTER CITY CENTRE



HILLS



Porch

3' 7" x 3' 0" (1.08m x 0.92m)

Entered via a uPVC front door. Complete with laminate flooring.

Lounge

13' 1" x 13' 3" (4.00m x 4.05m)

Complete with a ceiling light point, double glazed window and wall mounted radiator. Fitted with laminate flooring.

Kitchen

13' 0" x 12' 5" (3.97m x 3.78m)

Featuring complementary wall and base units with oven, hob and extractor. Space for a fridge freezer and washing machine. Complete with a ceiling light point, double glazed window and wall mounted radiator. Fitted with laminate flooring. Storage cupboard.

Bedroom One

10' 8" x 13' 2" (3.26m x 4.02m)

Complete with a ceiling light point, double glazed window and wall mounted radiator. Fitted with laminate flooring.

Bedroom Two

13' 1" x 7' 9" (4.00m x 2.37m)

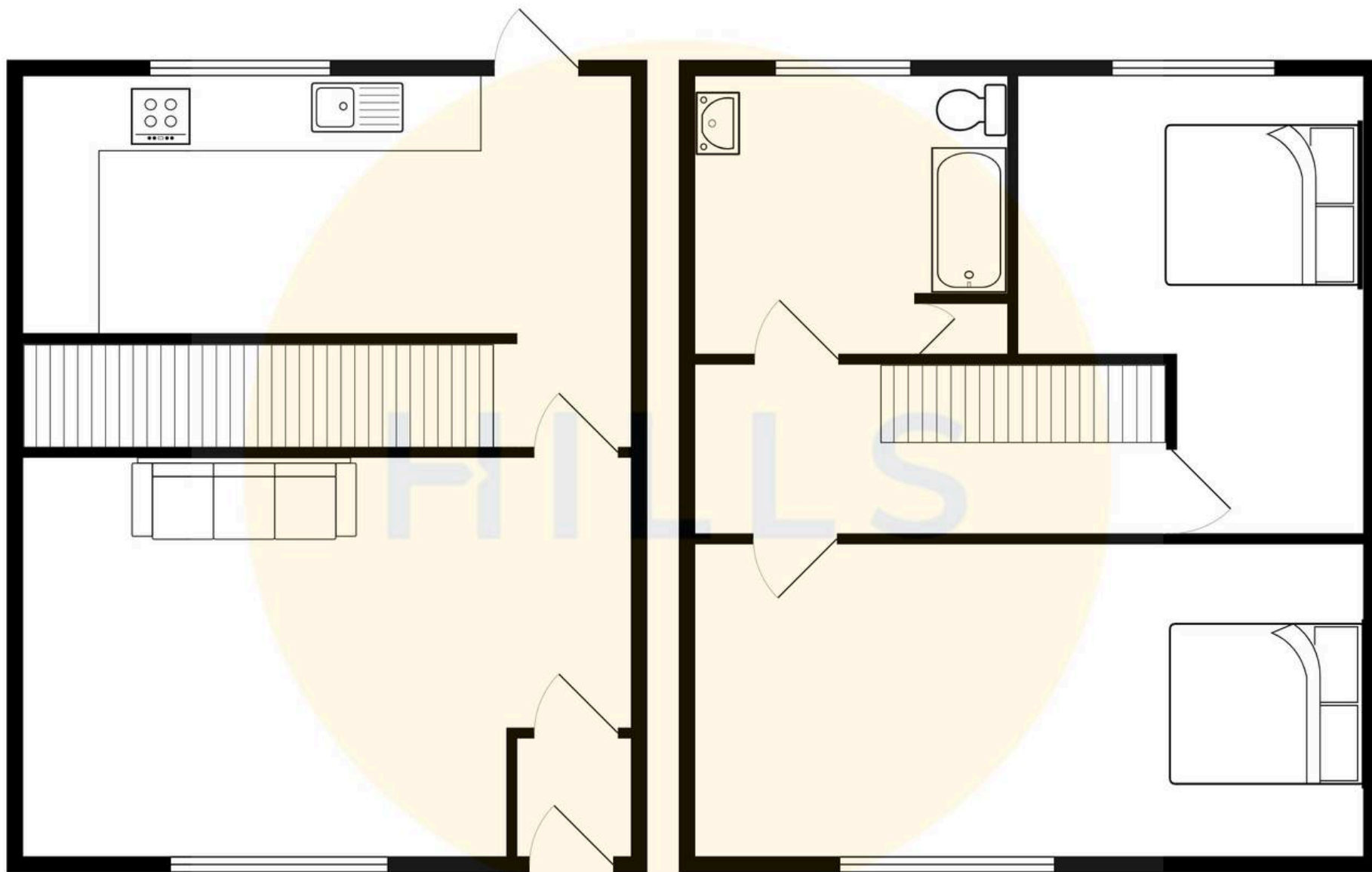
Complete with a ceiling light point, double glazed window and wall mounted radiator. Fitted with laminate flooring.

Bathroom

9' 1" x 5' 1" (2.78m x 1.56m)

Featuring a three piece suite including a bath with shower over, hand wash basin and W.C. Complete with a ceiling light point, double glazed window and wall mounted radiator. Fitted with tiled flooring.







Hills | Salfords Estate Agent

Hills Residential, Sentinel House Albert Street - M30 0SS

0161 707 4900

sales@hills.agency

www.hills.agency/



THE PROPERTY MISDESCRIPTIONS ACT 1991 The Agent has not tested any apparatus, equipment, fixtures and fittings or services and so cannot verify that they are in working order or fit for the purpose. A Buyer is advised to obtain verification from their Solicitor or Surveyor. References to the Tenure of a Property are based on information supplied by the Seller. The Agent has not had sight of the title documents. A Buyer is advised to obtain verification from their Solicitor. You are advised to check the availability of this property before travelling any distance to view. Every effort and precaution has been made to ensure these particulars are correct and not misleading but their accuracy is not guaranteed nor do they form part of any contract. If there is any point which is of particular importance to you, please contact us and we will provide any information you require. This is advisable, particularly if you intend to travel some distance to view the property. The mention of any appliances and services within these details does not imply that they are in full and efficient working order. These particulars are in draft form awaiting Vendors confirmation of their accuracy. These details must therefore be taken as a guide only.