

Grange Street

Salford



£220,000

# Grange Street

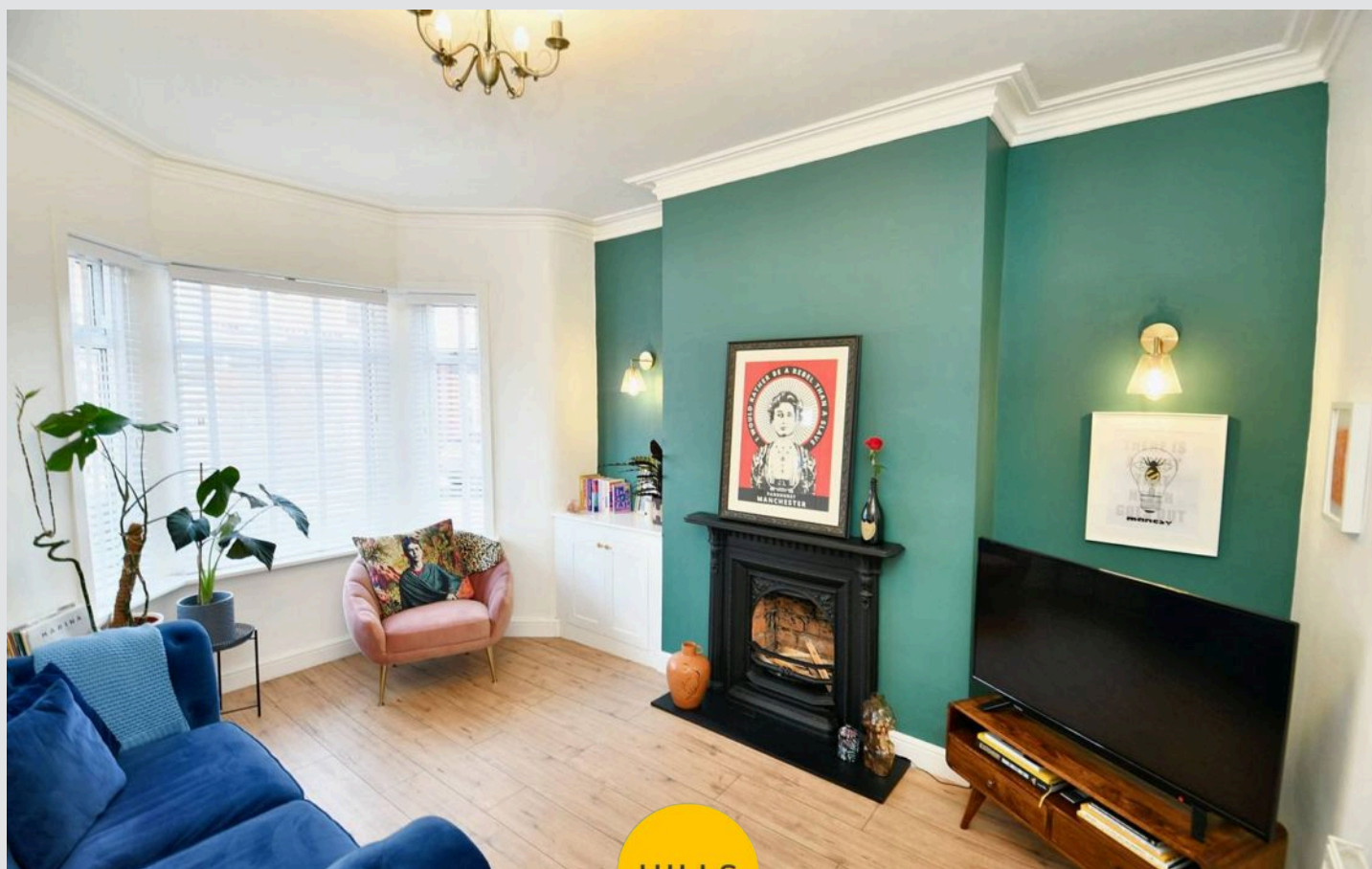
Salford

WOW! This thoughtfully decorated home is full of character and style! This three bedroom, bay-fronted property, features a modern fitted kitchen, generous room sizes and a great location!

Council Tax band: A

Tenure: Freehold

- Available with NO VENDOR CHAIN!
- Beautifully Presented Three Bedroom Bay-Fronted Property
- Just a Short Walk from Buile Hill Park
- Bay-Fronted Lounge and a Spacious Dining Room
- Modern Fitted Kitchen and a Three-Piece Bathroom
- Three Well-Proportioned Bedrooms
- Low-Maintenance Courtyard Garden to the Rear, with Brick-Built Storage
- Great First Time Home or Investment
- Close to Excellent Transport Links into Salford Quays, Media City and Manchester City Centre
- Viewing is Highly Recommended!



### Entrance Hallway

Complete with a ceiling light point, wall mounted radiator and cushioned flooring.

### Lounge

12' 0" x 10' 10" (3.65m x 3.30m)

Complete with a ceiling light point, two wall light points, three double glazed windows and wall mounted radiator. Fitted with laminate flooring.

### Dining Room

12' 10" x 11' 7" (3.92m x 3.54m)

Complete with a ceiling light point, double glazed window and wall mounted radiator. Fitted with laminate flooring.

### Kitchen

12' 8" x 8' 3" (3.87m x 2.51m)

Featuring complementary fitted units with space for a washing machine. Complete with two ceiling light points, two double glazed windows and wall mounted radiator. Fitted with cushioned flooring.

### Utility Room

4' 9" x 3' 0" (1.45m x 0.91m)

Complete with a wall light point.

### Landing

Complete with a ceiling light point and laminate flooring.

### Bedroom One

14' 6" x 11' 11" (4.43m x 3.64m)

Complete with a ceiling light point, two double glazed windows and wall mounted radiator. Fitted with laminate flooring.

### Bedroom Two

12' 11" x 9' 5" (3.94m x 2.86m)

Complete with a ceiling light point, double glazed window and wall mounted radiator. Fitted with laminate flooring.



**Bedroom Three**

8' 4" x 6' 0" (2.55m x 1.83m)

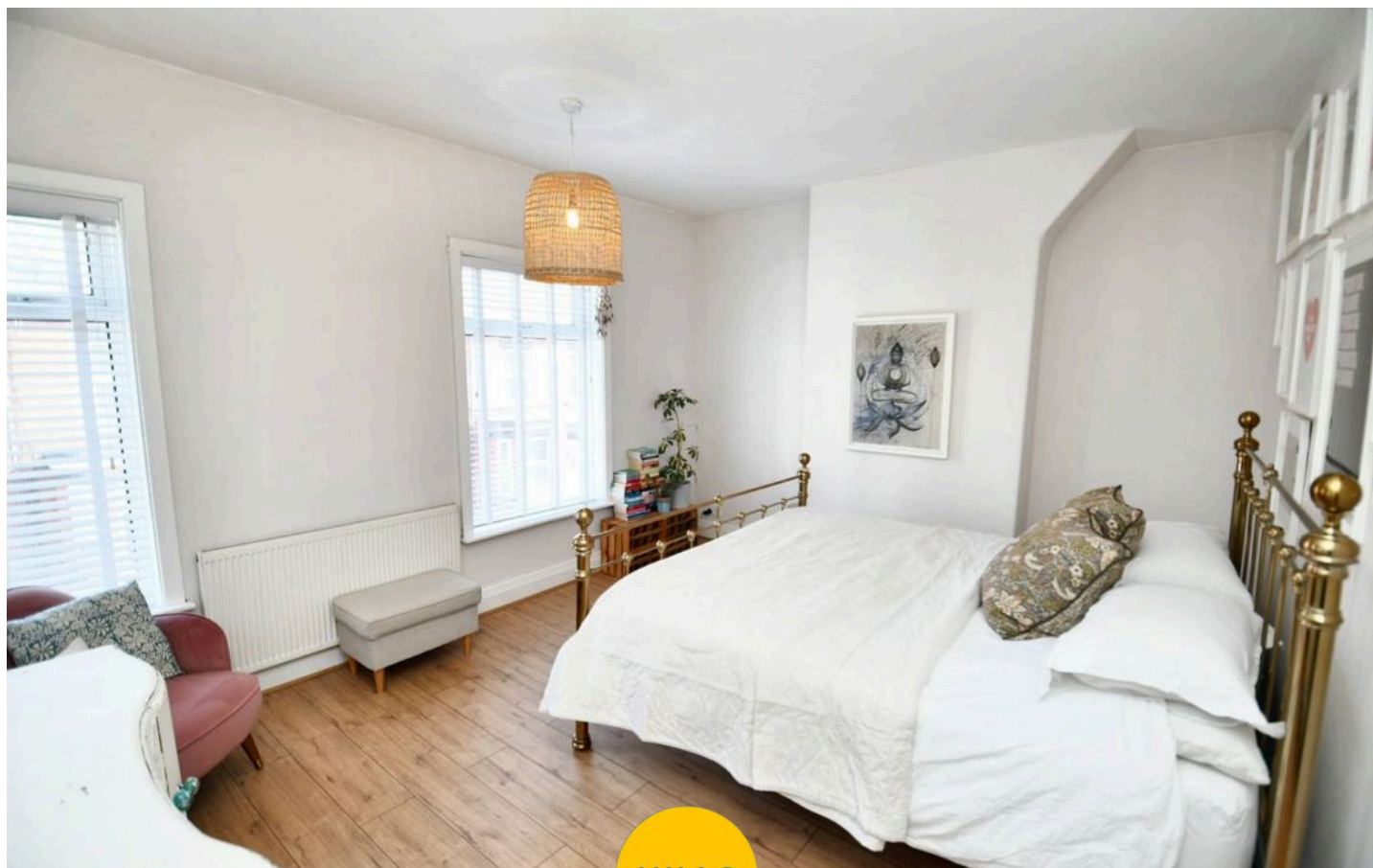
Complete with a ceiling light point, double glazed window and wall mounted radiator. Fitted with laminate flooring.

**Bathroom**

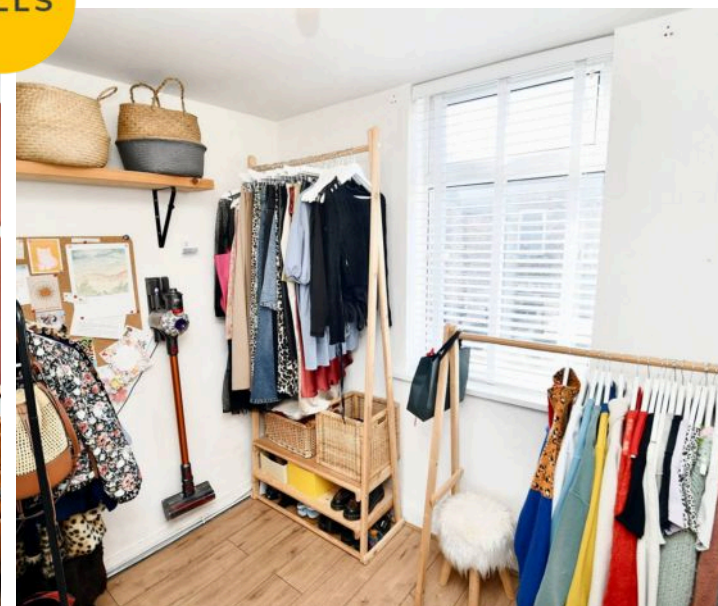
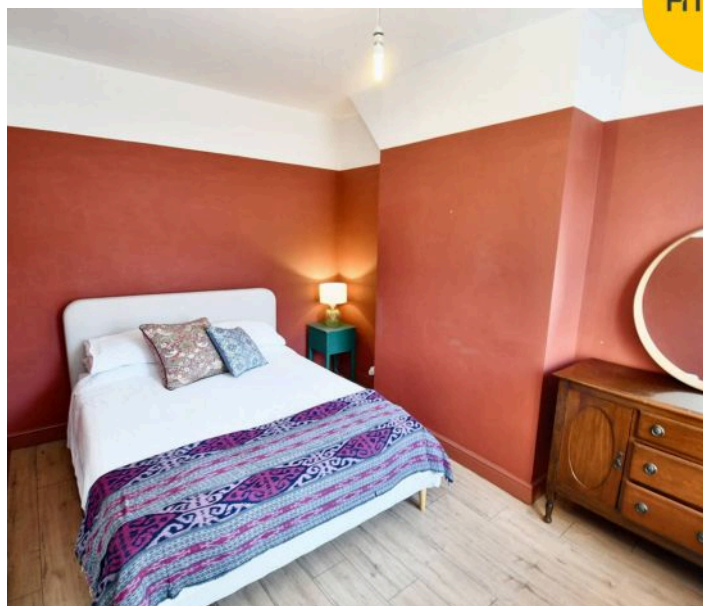
6' 5" x 5' 6" (1.96m x 1.68m)

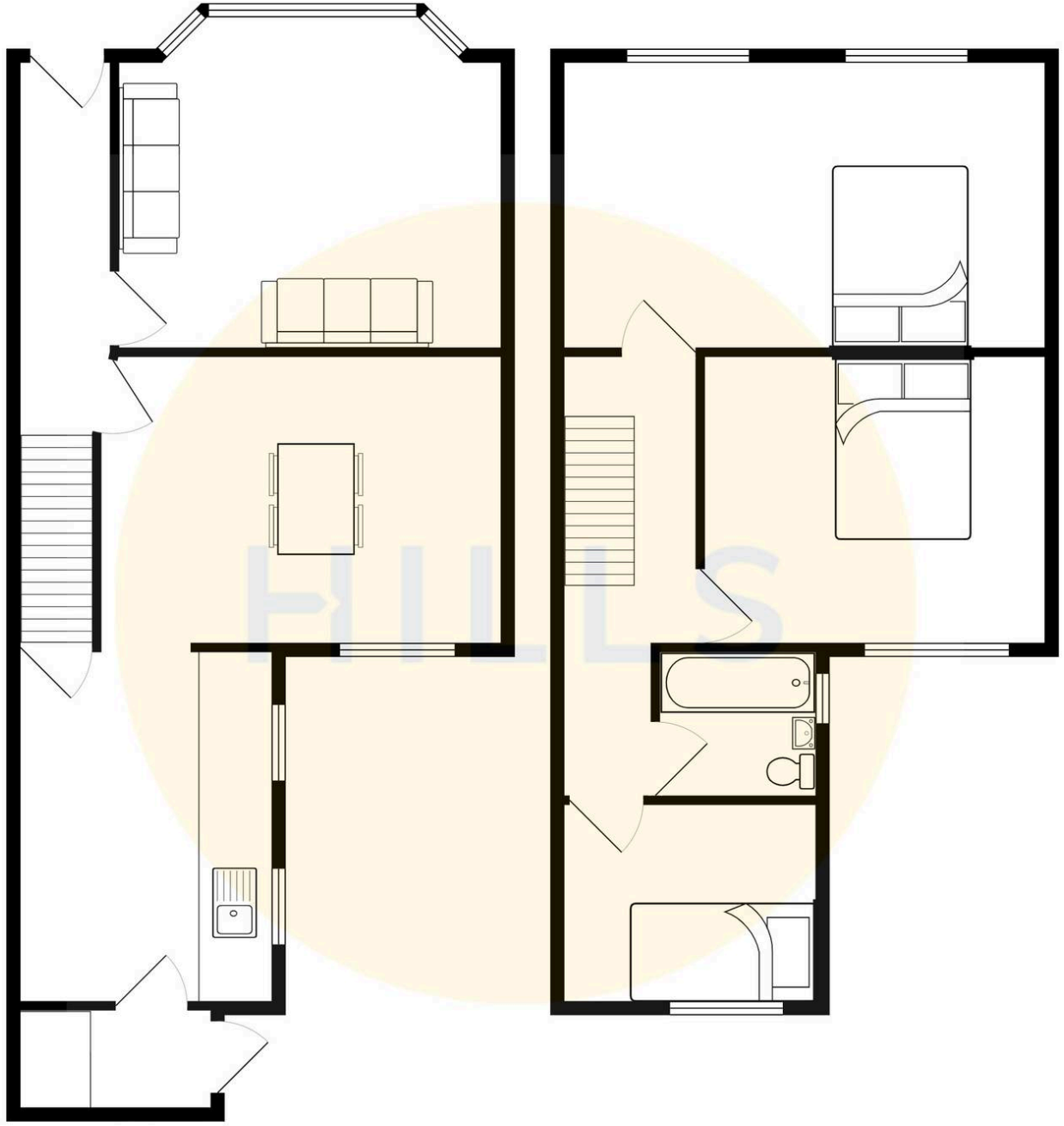
Featuring a three piece suite including a bath with shower over, hand wash basin and W.C. Complete with a ceiling light point, double glazed window and heated towel rail.

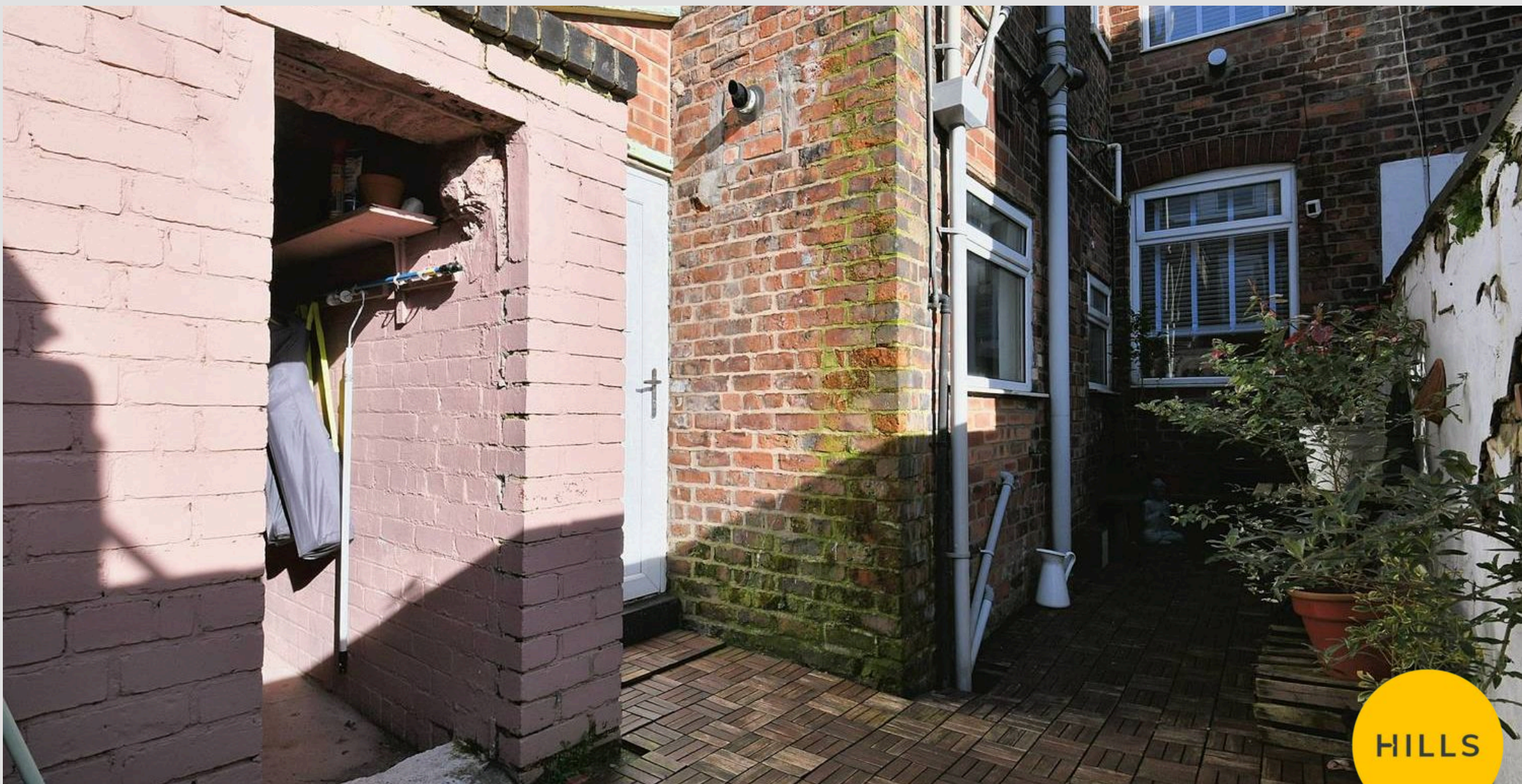
Fitted with part tiled walls and cushioned flooring.



HILLS







## Hills | Salfords Estate Agent

Hills Residential, Sentinel House Albert Street - M30 0SS

0161 707 4900

[sales@hills.agency](mailto:sales@hills.agency)

[www.hills.agency/](http://www.hills.agency/)



THE PROPERTY MISDESCRIPTIONS ACT 1991 The Agent has not tested any apparatus, equipment, fixtures and fittings or services and so cannot verify that they are in working order or fit for the purpose. A Buyer is advised to obtain verification from their Solicitor or Surveyor. References to the Tenure of a Property are based on information supplied by the Seller. The Agent has not had sight of the title documents. A Buyer is advised to obtain verification from their Solicitor. You are advised to check the availability of this property before travelling any distance to view. Every effort and precaution has been made to ensure these particulars are correct and not misleading but their accuracy is not guaranteed nor do they form part of any contract. If there is any point which is of particular importance to you, please contact us and we will provide any information you require. This is advisable, particularly if you intend to travel some distance to view the property. The mention of any appliances and services within these details does not imply that they are in full and efficient working order. These particulars are in draft form awaiting Vendors confirmation of their accuracy. These details must therefore be taken as a guide only.