

Overlinks Drive

Salford



In Excess of £260,000

# Overlinks Drive

Salford

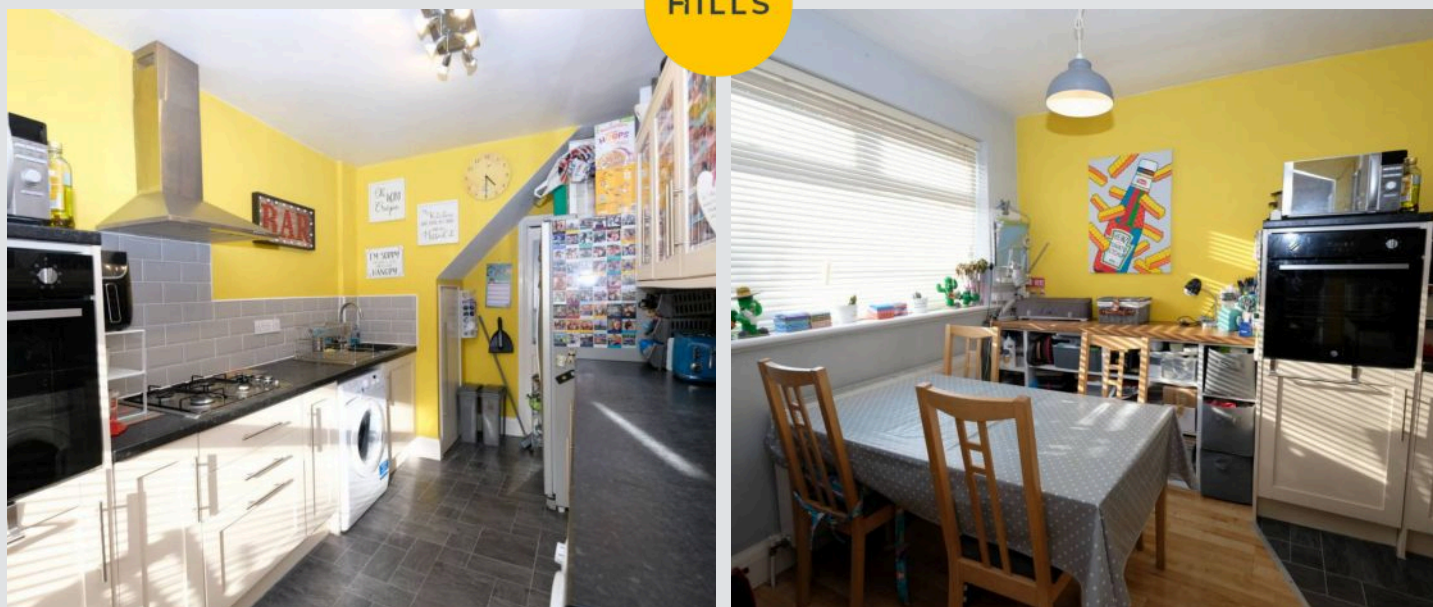
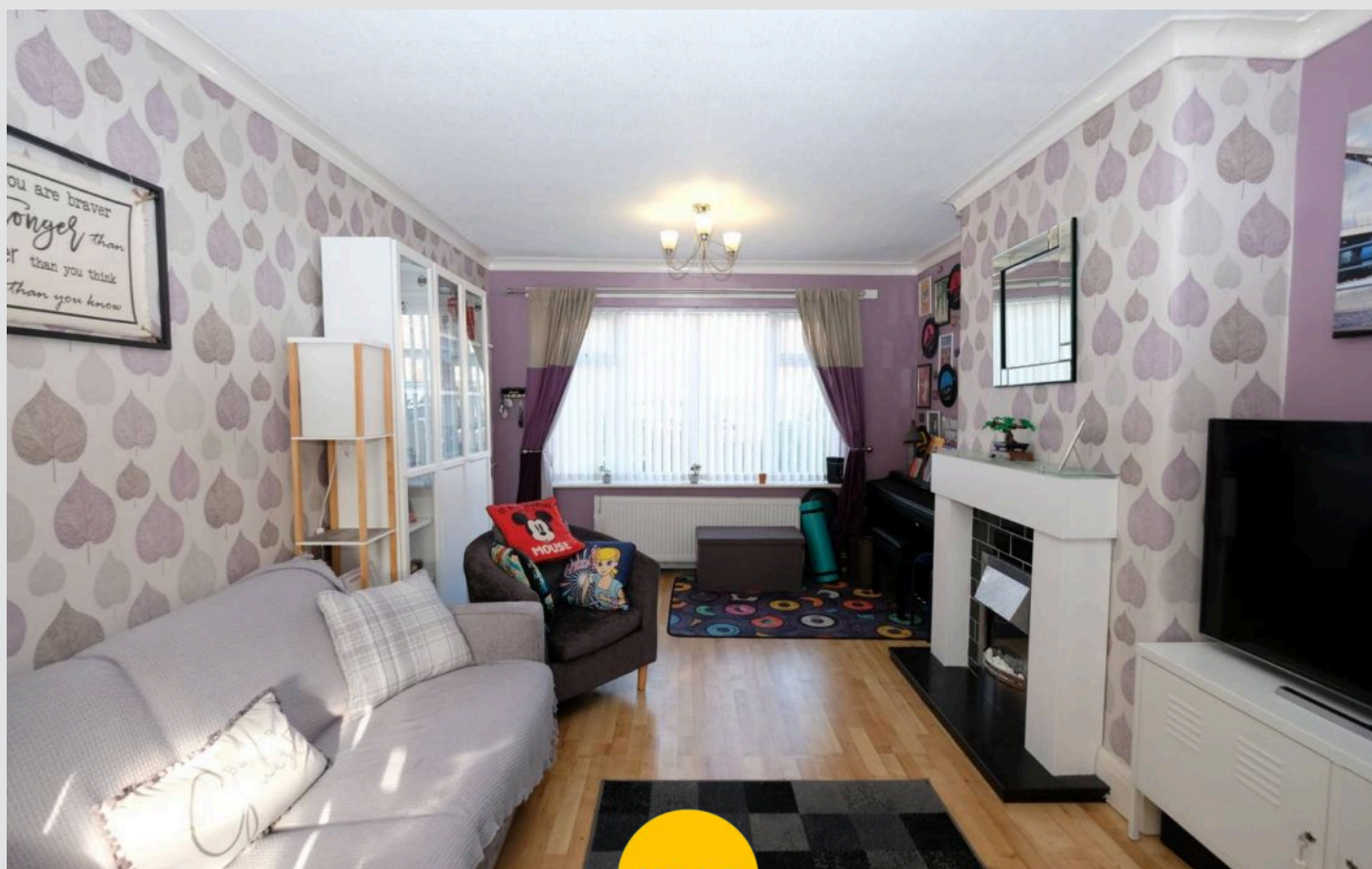
FANTASTIC THREE BEDROOM SEMI-DETACHED PROPERTY, featuring a DRIVEWAY TO THE FRONT AND A LARGE LOW MAINTENANCE GARDEN TO THE REAR!

Benefits from a Convenient Location Close to Local Schooling and parks

Council Tax band: B

Tenure: Freehold

- LARGE THREE BEDROOM SEMI-DETACHED PROPERTY
- FULL WIDTH SINGLE STORY REAR EXTENSION
- DRIVEWAY FOR OFF-ROAD PARKING
- SPACIOUS LOUNGE AND SEPERATE DINING AREA
- MODERN FITTED KITCHEN AND FAMILY BATHROOM
- THREE WELL PROPORTIONED BEDROOMS
- LARGE REAR GARDEN
- WELL-PRESENTED THROUGHOUT
- Within walking distance of amenities, several well-kept parks, local schooling and Salford Royal Hospital
- Within easy access of excellent transport links into Salford Quays, Media City and Manchester City Centre



### Entrance Hallway

7' 3" x 7' 11" (2.22m x 2.41m)

Entered via a uPVC front door. Complete with a ceiling light point, double glazed window, wall mounted radiator and laminate flooring.

### Lounge

17' 10" x 10' 11" (5.44m x 3.32m)

Featuring an electric fireplace. Complete with a ceiling light point, double glazed window and wall mounted radiator. Fitted with laminate flooring.

### Dining Room

7' 7" x 11' 1" (2.30m x 3.39m)

Complete with a ceiling light point, patio doors and wall mounted radiator. Fitted with laminate flooring.

### Kitchen

19' 2" x 8' 2" (5.83m x 2.48m)

Featuring complementary wall and base units with cooker, hob and extractor. Washing machine, dryer and fridge freezer. Complete with a ceiling light point, double glazed window and wall mounted radiator. Fitted with laminate flooring. Boiler in cupboard.



HILLS



**Bathroom**

6' 4" x 7' 8" (1.93m x 2.34m)

Featuring a three piece suite including a bath with shower over, hand wash basin and W.C. Complete with a ceiling light point, extractor, double glazed window and heated towel rail. Fitted with lino flooring.

**Bedroom One**

10' 8" x 9' 7" (3.24m x 2.93m)

Complete with a ceiling light point, double glazed window and wall mounted radiator. Fitted with carpet flooring.

**Bedroom Two**

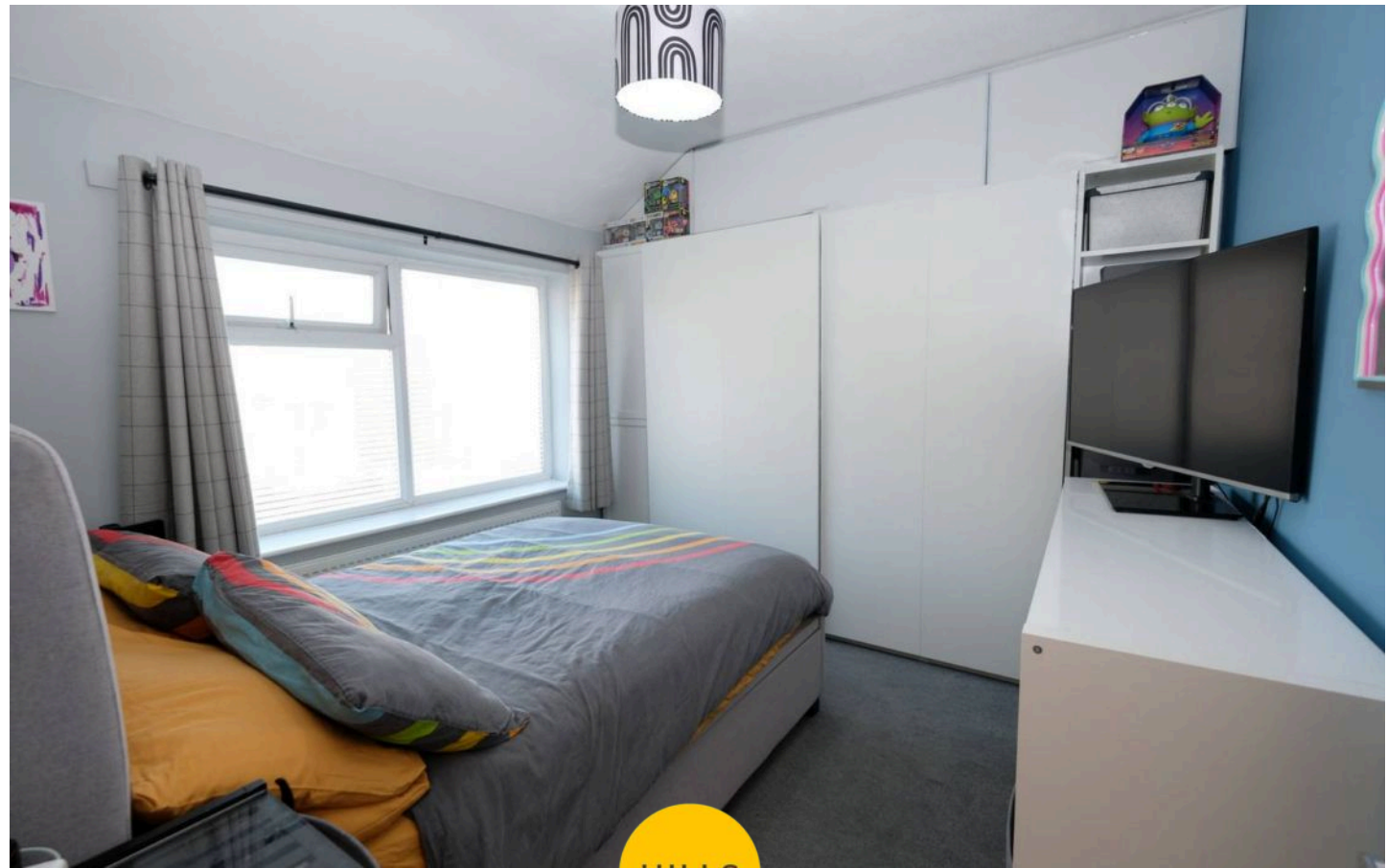
10' 8" x 8' 2" (3.24m x 2.49m)

Complete with a ceiling light point, double glazed window and wall mounted radiator. Fitted with carpet flooring.

**Bedroom Three**

8' 1" x 7' 9" (2.46m x 2.37m)

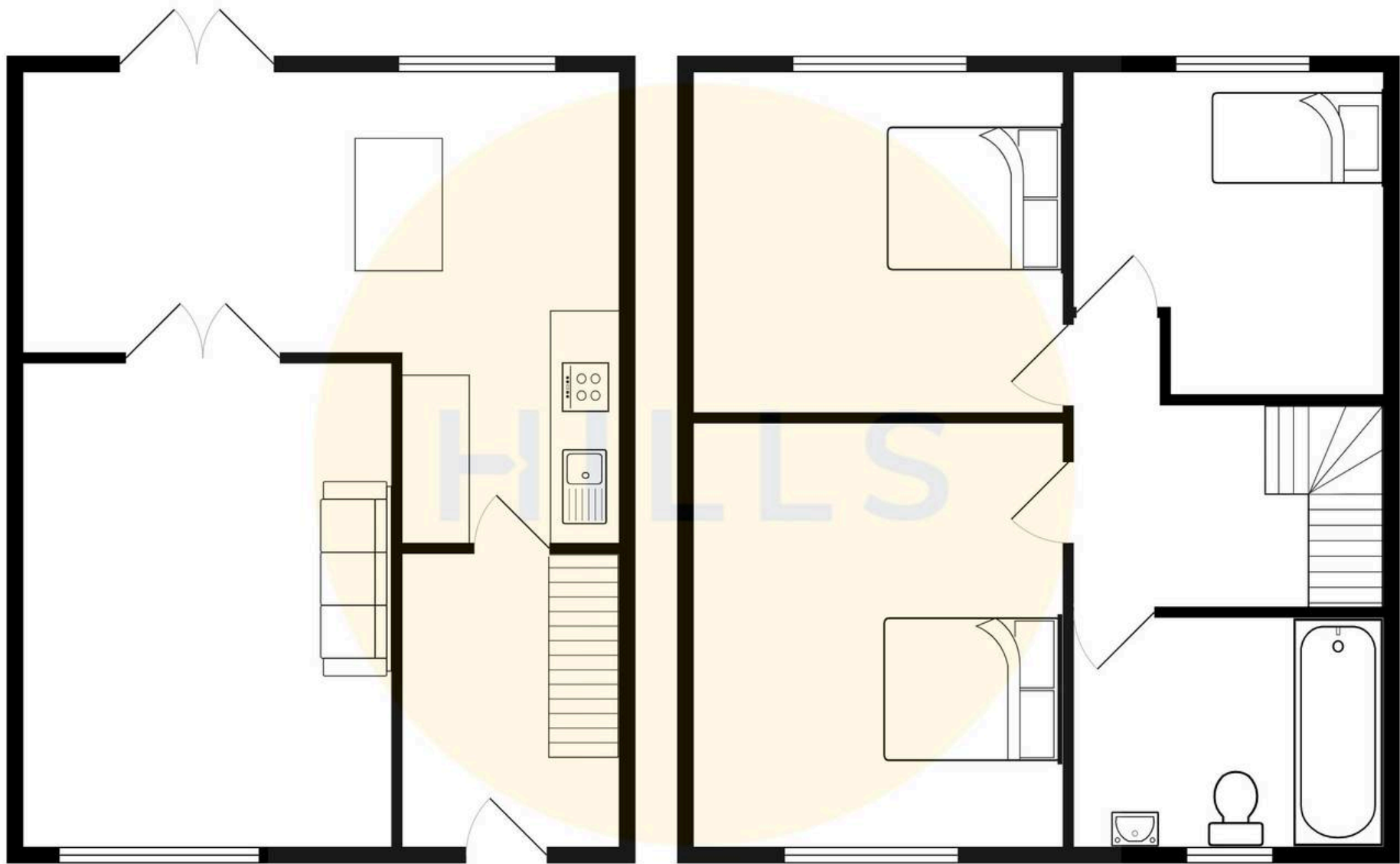
Complete with a ceiling light point, double glazed window and wall mounted radiator. Fitted with carpet flooring.





HILLS







## Hills | Salfords Estate Agent

Hills Residential, Sentinel House Albert Street - M30 0SS

0161 707 4900

[sales@hills.agency](mailto:sales@hills.agency)

[www.hills.agency/](http://www.hills.agency/)



THE PROPERTY MISDESCRIPTIONS ACT 1991 The Agent has not tested any apparatus, equipment, fixtures and fittings or services and so cannot verify that they are in working order or fit for the purpose. A Buyer is advised to obtain verification from their Solicitor or Surveyor. References to the Tenure of a Property are based on information supplied by the Seller. The Agent has not had sight of the title documents. A Buyer is advised to obtain verification from their Solicitor. You are advised to check the availability of this property before travelling any distance to view. Every effort and precaution has been made to ensure these particulars are correct and not misleading but their accuracy is not guaranteed nor do they form part of any contract. If there is any point which is of particular importance to you, please contact us and we will provide any information you require. This is advisable, particularly if you intend to travel some distance to view the property. The mention of any appliances and services within these details does not imply that they are in full and efficient working order. These particulars are in draft form awaiting Vendors confirmation of their accuracy. These details must therefore be taken as a guide only.