



Gaskell Road, Eccles

Manchester

HILLS

£180,000

Gaskell Road

Eccles, Manchester

Spacious three bed terraced house in quiet cul de sac with lounge, conservatory, versatile reception room, fitted kitchen, private garden & convenient amenities nearby. Close to Trafford Centre with easy transport links.

Council Tax band: A

Tenure: Freehold

- Located on a Quiet Cul De Sac Close to Excellent Amenities
- Offered to the Market with No Onward Chain
- Spacious Family Lounge, Separate Dining Room & Conservatory
- Fitted Kitchen & Shower Room
- Ample Storage Throughout
- Three Double Bedrooms
- Well Kept Gardens to the Front & Rear
- Located within Walking Distance to The Trafford Centre
- Well Served by Public Transport & Motorway Links



HILLS



Entrance Hallway

Entered via composite front door. Complete with a double glazed window, wall mounted radiator and laminate flooring. Storage cupboard.

Lounge

16' 6" x 10' 9" (5.03m x 3.28m)

Complete with a ceiling light point, double glazed window, French doors and wall mounted radiator. Fitted with laminate flooring.

Reception Room Two

10' 1" x 10' 0" (3.07m x 3.05m)

Complete with a ceiling light point, double glazed window and wall mounted radiator. Fitted with carpet flooring.

Kitchen

14' 0" x 6' 0" (4.27m x 1.83m)

Featuring complementary wall and base units with integral stainless steel sink. Space for a washing machine, cooker and fridge freezer. Complete with two ceiling light points, double glazed window and wall mounted radiator. Fitted with hardwood door, part tiled walls and laminate tiled flooring.

Conservatory

10' 6" x 8' 7" (3.20m x 2.62m)

Complete with a ceiling light point and fan, double glazed windows and laminate flooring.

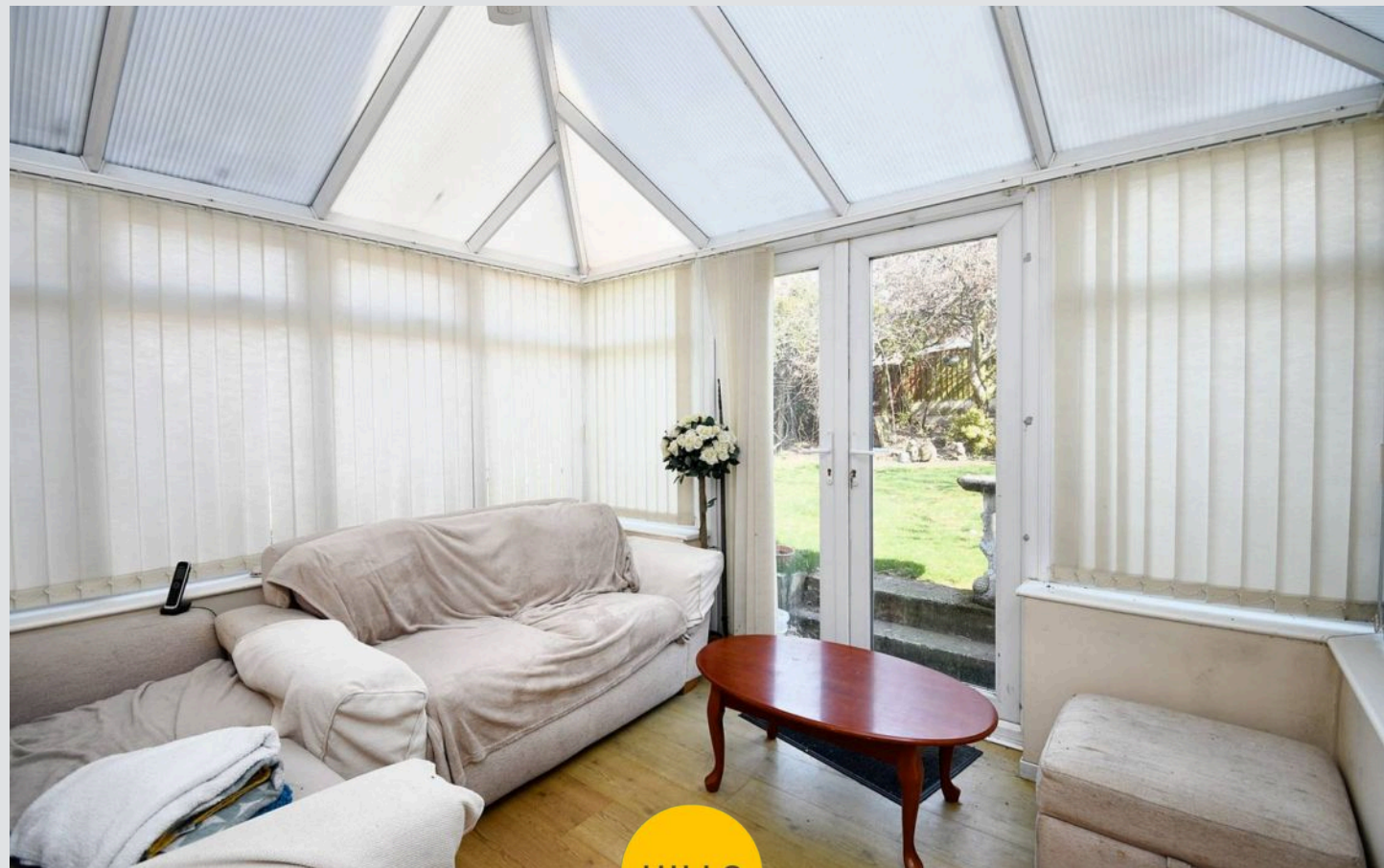
Landing

Complete with a ceiling light point, double glazed window and carpet flooring. Loft access.

Bedroom One

16' 7" x 10' 9" (5.05m x 3.28m)

Featuring a storage cupboard and fitted closet. Complete with a ceiling light point, two double glazed windows and wall mounted radiator. Fitted with carpet flooring.



Bedroom Two

Complete with a ceiling light point, double glazed window and wall mounted radiator. Fitted with carpet flooring.

Bedroom Three

13' 8" x 8' 0" (4.17m x 2.44m)

Complete with a ceiling light point, two double glazed windows and wall mounted radiator. Fitted with carpet flooring.

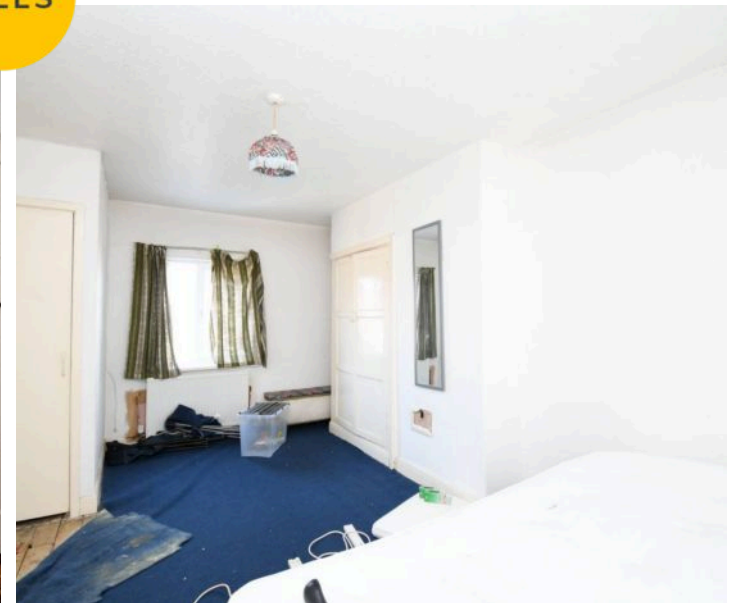
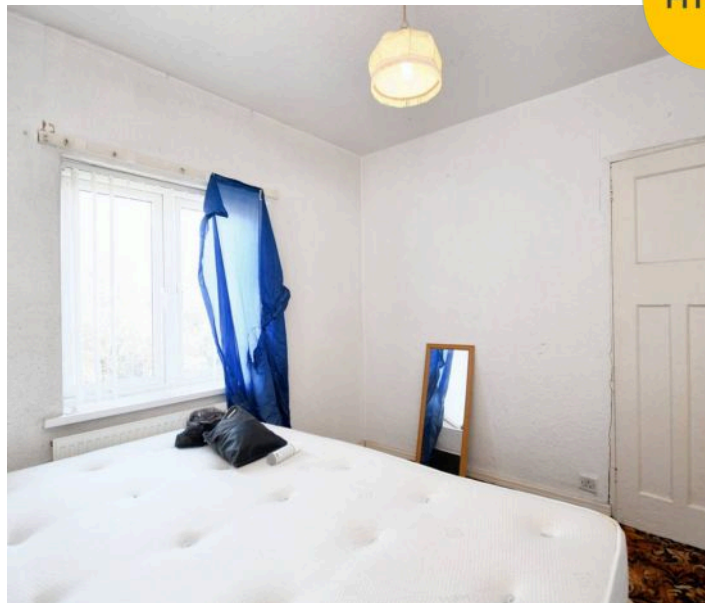
Bathroom

6' 8" x 5' 4" (2.03m x 1.63m)

Featuring a three piece suite including a shower, hand wash basin and W.C. Complete with a ceiling light point, double glazed window and wall mounted radiator. Fitted with laminate flooring.

External

To the rear of the property is a sun drenched garden with raised lawn and colourful borders.







Hills | Salfords Estate Agent

Hills Residential, Sentinel House Albert Street – M30 0SS

0161 707 4900

sales@hills.agency

www.hills.agency/



THE PROPERTY MISDESCRIPTIONS ACT 1991 The Agent has not tested any apparatus, equipment, fixtures and fittings or services and so cannot verify that they are in working order or fit for the purpose. A Buyer is advised to obtain verification from their Solicitor or Surveyor. References to the Tenure of a Property are based on information supplied by the Seller. The Agent has not had sight of the title documents. A Buyer is advised to obtain verification from their Solicitor. You are advised to check the availability of this property before travelling any distance to view. Every effort and precaution has been made to ensure these particulars are correct and not misleading but their accuracy is not guaranteed nor do they form part of any contract. If there is any point which is of particular importance to you, please contact us and we will provide any information you require. This is advisable, particularly if you intend to travel some distance to view the property. The mention of any appliances and services within these details does not imply that they are in full and efficient working order. These particulars are in draft form awaiting Vendors confirmation of their accuracy. These details must therefore be taken as a guide only.