



**The Nook, Eccles**

Manchester



In Excess of **£325,000**



# The Nook

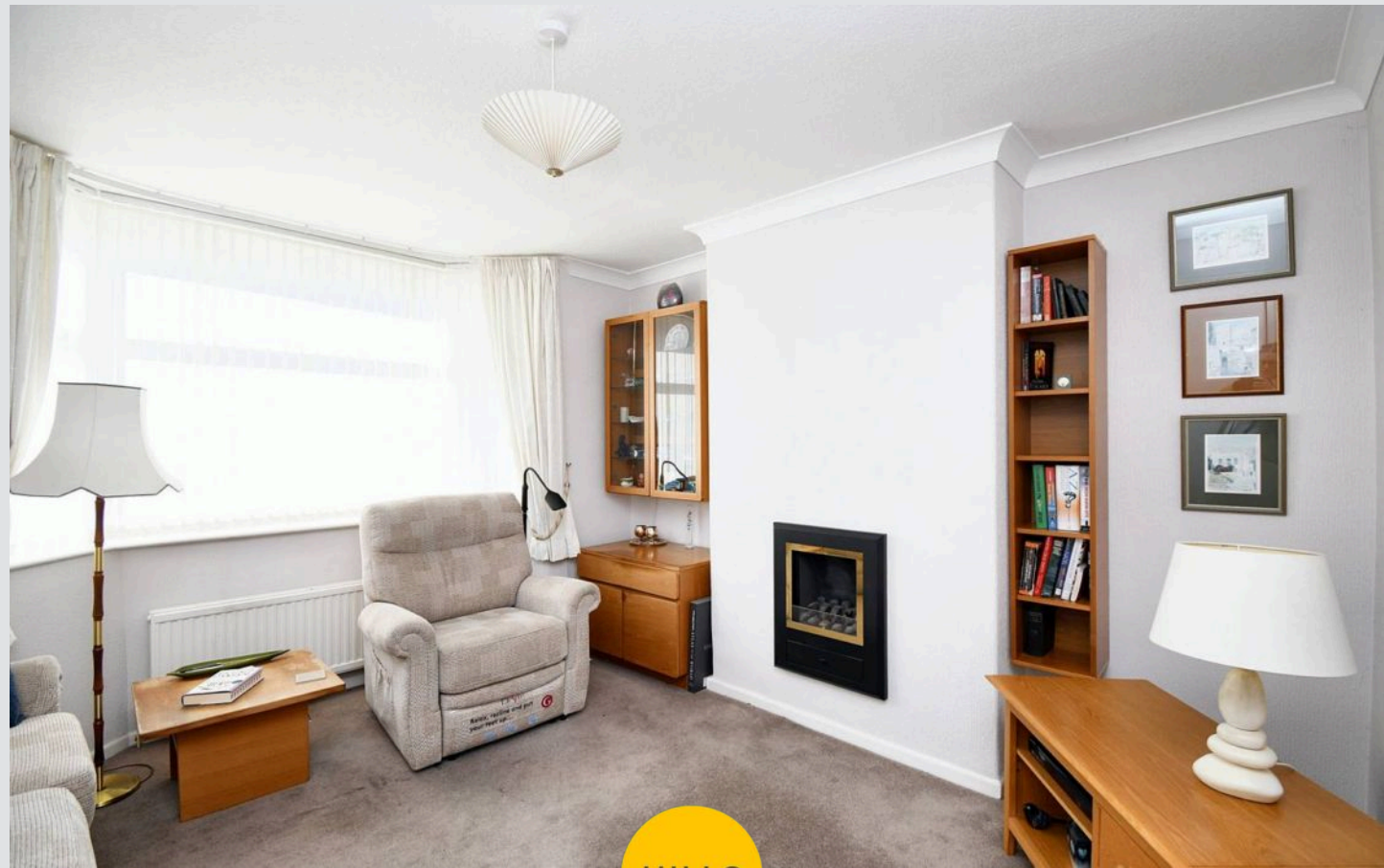
Eccles, Manchester

Fantastic three bed semi-detached in quiet Winton cul de sac, bordering Worsley Village. Lounge, second reception, fitted kitchen, guest w.c. Off-road parking, detached garage, lovely gardens. No chain. Convenient location with great amenities and transport links."

Council Tax band: C

Tenure: Leasehold

- Situated on a Quiet Cul De Sac Bordering Worsley Village
- Bay Fronted Lounge and Second Reception Room
- Fitted Kitchen
- Three Generous Bedrooms
- Shower Room, Separate W.C. and Guest W.C.
- Off Road Parking and Detached Garage
- Beautifully Kept Gardens to the Front & Rear
- Offered to the Market with No Onward chain
- Excellently Surrounded by Brilliant Amenities & Transport Links



HILLS





### Entrance Hallway

Entered via a composite front door. Complete with wall light point, wall mounted radiator and carpet flooring.

### Lounge

12' 9" x 10' 5" (3.89m x 3.18m)

Featuring a gas fire. Complete with a ceiling light point, double glazed window and wall mounted radiator. Fitted with carpet flooring.

### Reception Room Two

12' 8" x 10' 3" (3.86m x 3.12m)

Complete with a ceiling light point, French doors and wall mounted radiator. Fitted with carpet flooring.

### Downstairs W.C.

3' 0" x 2' 6" (0.91m x 0.76m)

Featuring a two piece suite including hand wash basin and W.C. Complete with ceiling spotlights, double glazed window and wall mounted radiator. Fitted with carpet flooring.

### Kitchen

8' 8" x 7' 7" (2.64m x 2.31m)

Featuring complementary wall and base units with stainless steel sink. Space for a washing machine, fridge freezer and cooker. Complete with a ceiling light point, double glazed window, uPVC door and wall mounted radiator. Fitted with part tiled walls and tiled flooring.

### Bedroom One

13' 7" x 10' 2" (4.14m x 3.10m)

Featuring fitted wardrobes. Complete with a ceiling light point, double glazed bay window and carpet flooring.

### Bedroom Two

12' 2" x 9' 2" (3.71m x 2.79m)

Featuring fitted wardrobes. Complete with a ceiling light point, double glazed window and wall mounted radiator. Fitted with carpet flooring.



HILLS





**Bedroom Three**

8' 4" x 6' 8" (2.54m x 2.03m)

Complete with a ceiling light point, double glazed window and wall mounted radiator. Fitted with carpet flooring. Storage cupboard.

**Bathroom**

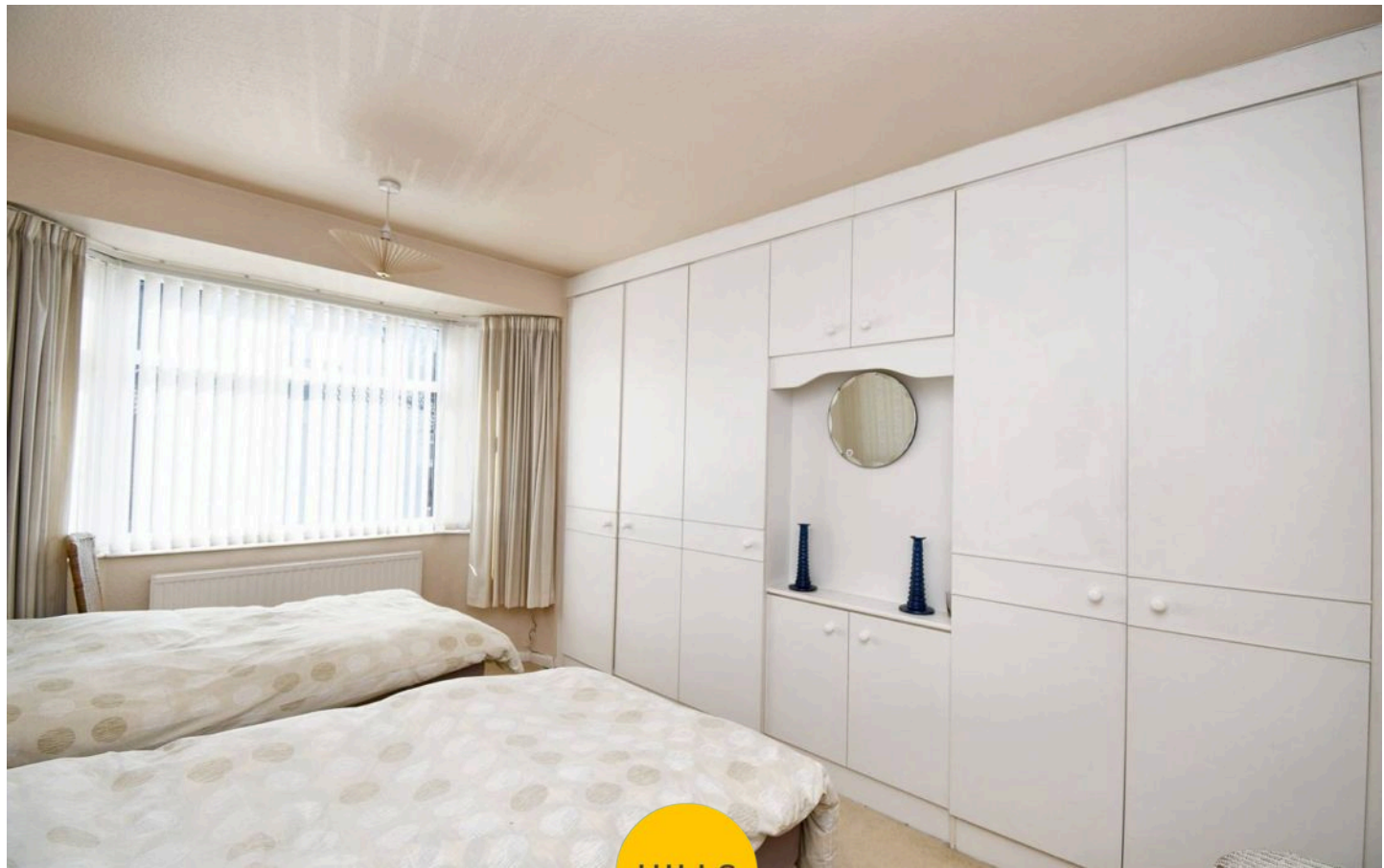
7' 7" x 5' 4" (2.31m x 1.63m)

Featuring a two piece suite including shower cubicle and hand wash basin. Complete with a ceiling light point, double glazed window and storage cupboard. Fitted with part tiled walls and cushioned flooring. Loft access.

**W.C.**

4' 8" x 3' 0" (1.42m x 0.91m)

Featuring a W.C. Complete with a ceiling light point, double glazed window, part tiled walls and cushioned flooring.



HILLS

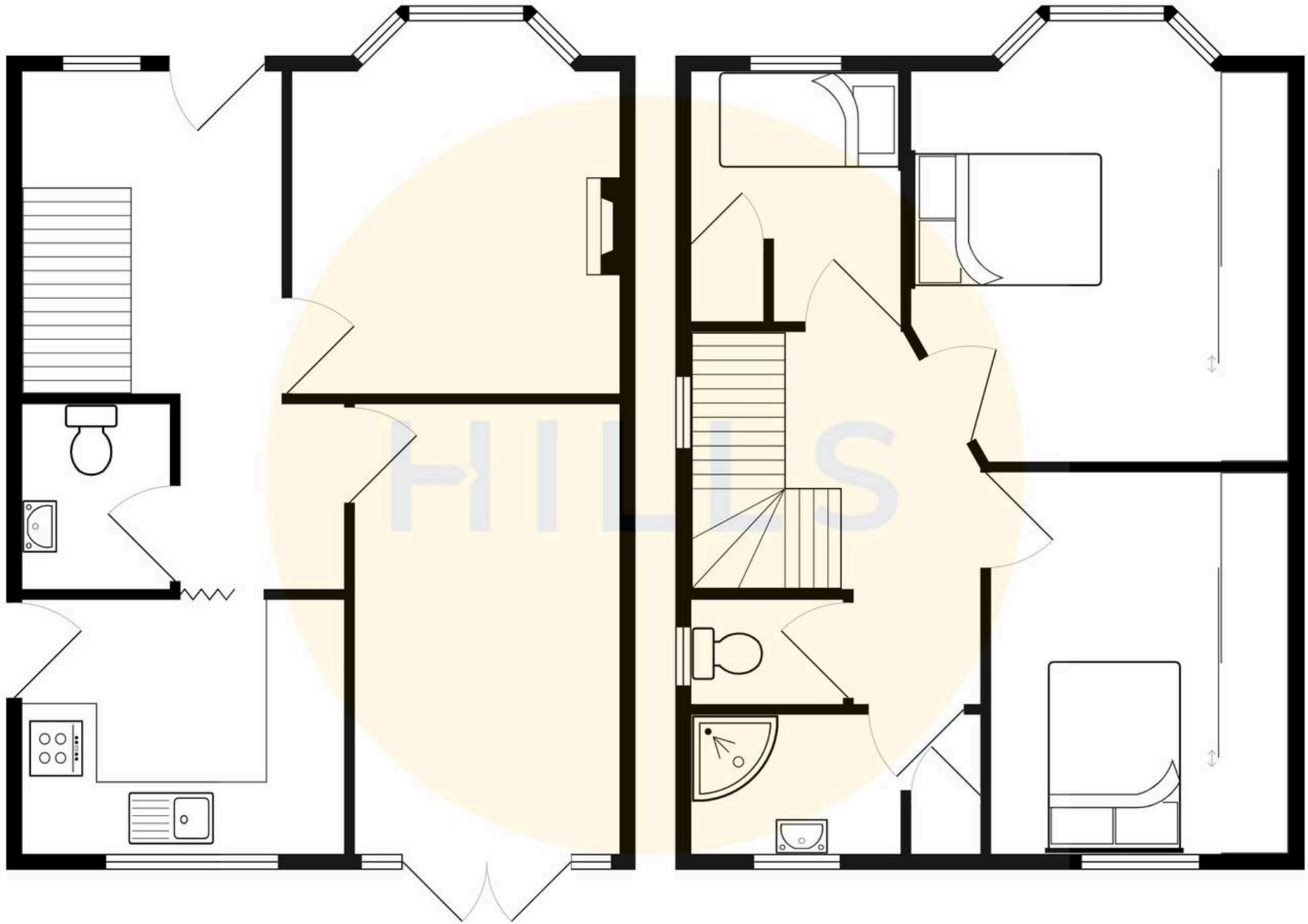






HILLS









## Hills | Salfords Estate Agent

Hills Residential, Sentinel House Albert Street – M30 0SS

0161 707 4900

[sales@hills.agency](mailto:sales@hills.agency)

[www.hills.agency/](http://www.hills.agency/)



THE PROPERTY MISDESCRIPTIONS ACT 1991 The Agent has not tested any apparatus, equipment, fixtures and fittings or services and so cannot verify that they are in working order or fit for the purpose. A Buyer is advised to obtain verification from their Solicitor or Surveyor. References to the Tenure of a Property are based on information supplied by the Seller. The Agent has not had sight of the title documents. A Buyer is advised to obtain verification from their Solicitor. You are advised to check the availability of this property before travelling any distance to view. Every effort and precaution has been made to ensure these particulars are correct and not misleading but their accuracy is not guaranteed nor do they form part of any contract. If there is any point which is of particular importance to you, please contact us and we will provide any information you require. This is advisable, particularly if you intend to travel some distance to view the property. The mention of any appliances and services within these details does not imply that they are in full and efficient working order. These particulars are in draft form awaiting Vendors confirmation of their accuracy. These details must therefore be taken as a guide only.